

1.500 Acre Tract  
P. B. 8 Pg. 867  
N84° 51' W

156116

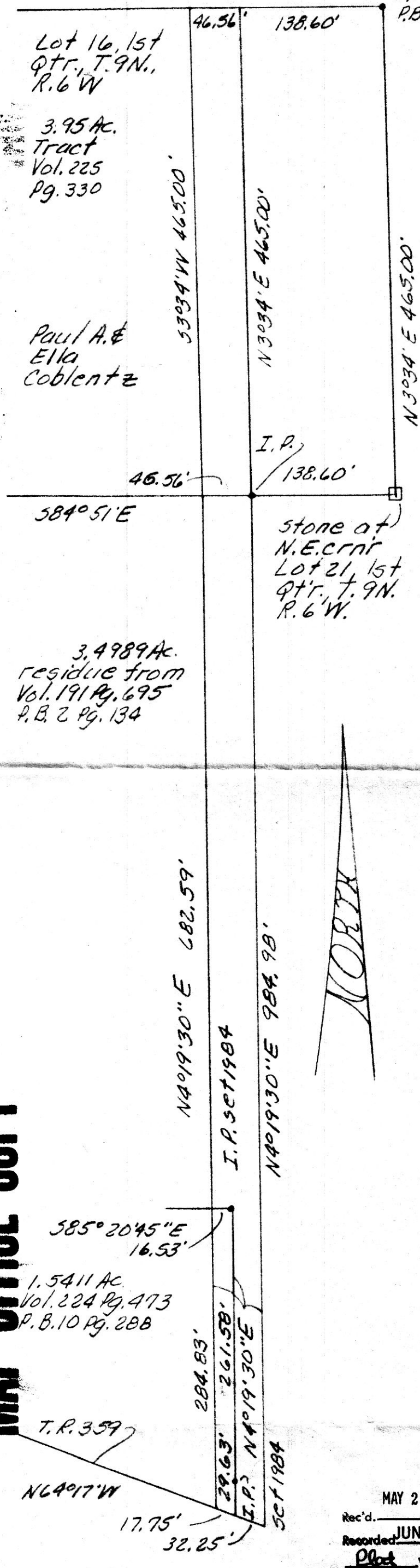
Known as an easement for purposes  
of ingress and egress from T.R. 359  
I.P. P.B. 7 Pg. 787 to a 1.50 acre tract in Lot 16, 1st  
Qtr., Twp. 9 N., Ra. 6 W., of Berlin Twp,  
Hol. Co., Ohio, and being located in  
Lots 16 and 21, 1st Qtr., and being  
parts of a 1.5411 acre tract (Vol. 224  
Pg. 473), a 3.4989 acre tract (Vol. 191  
Pg. 695), and a 3.95 acre tract (Vol.  
225 Pg. 330), and described as follows.

Beginning at a stone monument  
at the N.E. crnr of Lot 21; thence  
with the North Line thereof North  
84° 51' 00" West 138.60' to an iron  
pin at the true point of beginning;  
thence leaving said lot line South  
4° 19' 30" West 984.98' to a point in  
T.R. 359;

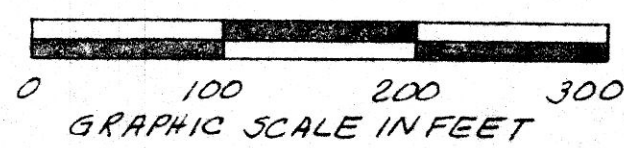
thence with T.R. 359 North 64° 17' 00"  
West 50.00' to a point;  
thence leaving T.R. 359 North 4° 19' 30"  
East 967.42' to a point on the North  
Line of Lot 21 and the South Line of  
Lot 16;

thence North 3° 34' 00" East 465.00'  
to a point;  
thence South 84° 51' 00" East  
46.56' to a point;  
thence South 3° 34' 00" West 465.00'  
to the point of beginning and there  
to terminate.

Description compiled from the  
above captioned data.



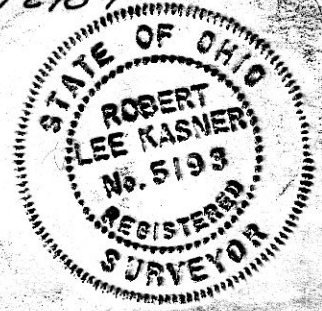
MAP OFFICE COPY



Known as part of Lots 16  
& 21, 1st Qtr., Twp. 9 N., Ra.  
6 W., of Berlin Twp., Hol.  
Co., Ohio.

Robert L. Kasner P.S. 5193  
P.E. 28820  
5/12/87

156116



Rec'd. MAY 29 1987 AT 3:49 O'CLOCK PM  
Recorded JUN 1 1987 Holmes Co. Ohio Fee 8.00  
Plot Vol. 10 Pg. 749 Recorder Richard Thayer PM