

155781

0 100 200 400

SCALE: 1" = 200'

- IRON PIN FOUND
- 5/8" RE-BAR WITH I.D. CAP SET

REFERENCES:

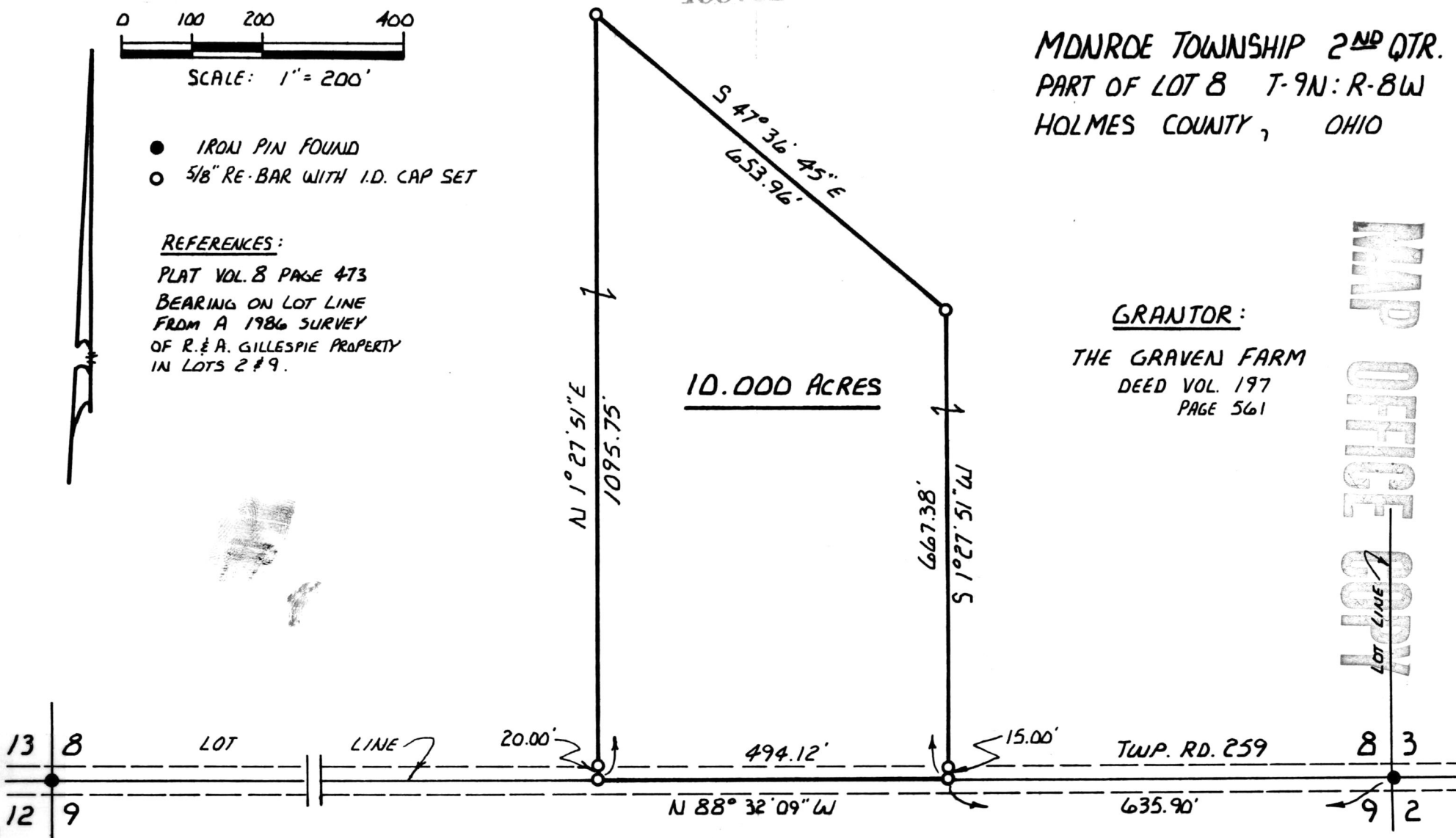
PLAT VOL. 8 PAGE 473
 BEARING ON LOT LINE
 FROM A 1986 SURVEY
 OF R. & A. GILLESPIE PROPERTY
 IN LOTS 2 & 9.

MDARDE TOWNSHIP 2ND QTR.
 PART OF LOT 8 T-9N:R-8W
 HOLMES COUNTY, OHIO

GRANTOR:

THE GRAVEN FARM
 DEED VOL. 197
 PAGE 561

10.000 ACRES



MAP OFFICE COPY

I CERTIFY THIS SURVEY TO BE CORRECT
 TO THE BEST OF MY KNOWLEDGE.

Donald C Baker
 DONALD C. BAKER P.S. 6938

4321 T.R. 252
 GLENMONT, OH.

APRIL 13, 1987



155781

Rec'd. MAY 4 1987 AT 1:20 O'CLOCK PM
 Recorded MAY 5 1987 Holmes Co. Ohio Fee: 5.00
 Plat Vol. 10 Pg. 732 Recorder Richard Graven

Deed Vol. 235 Pg. 57

VOL 10 PAGE 732