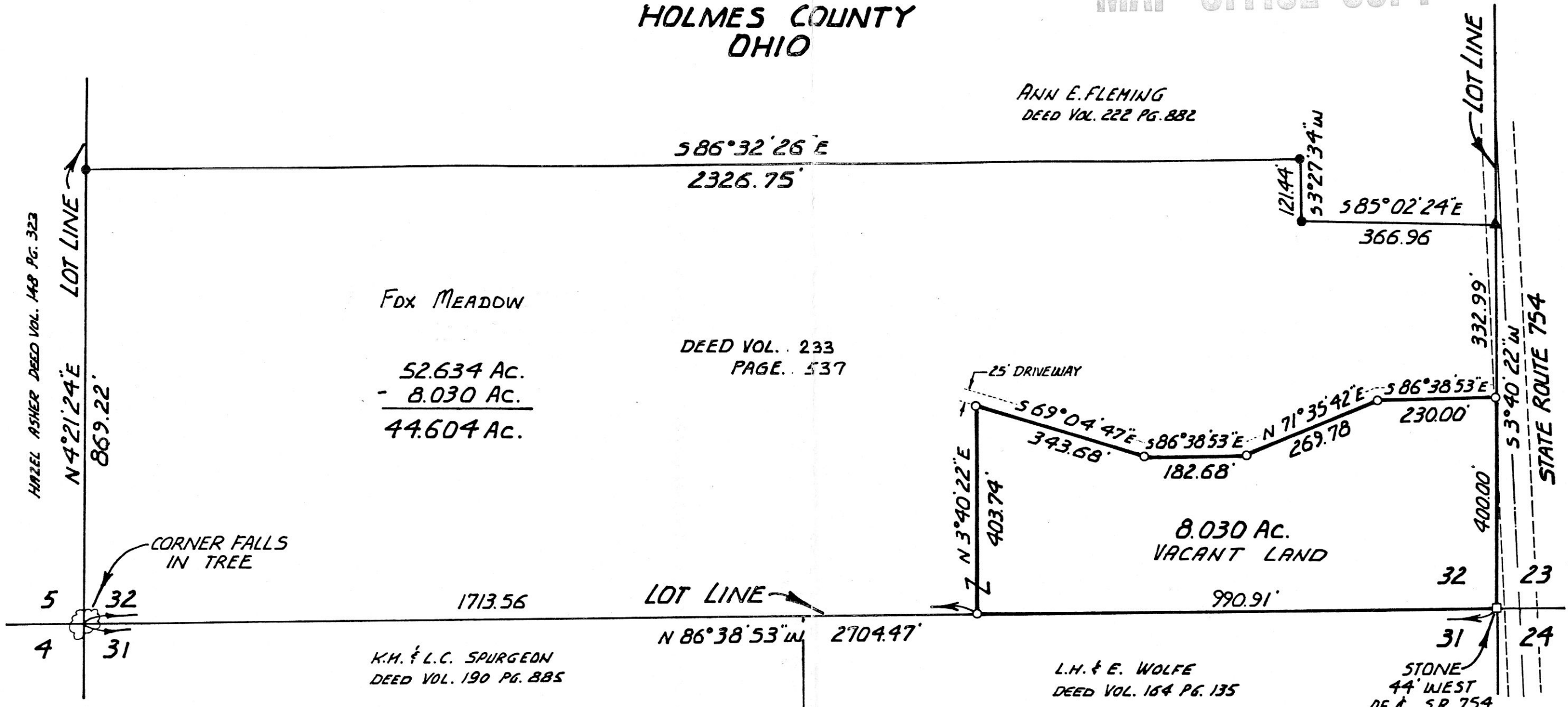


MONROE TOWNSHIP  
LOT 32, 1<sup>ST</sup> QTR., T-9N; R-8W  
HOLMES COUNTY  
OHIO

MAP OFFICE COPY

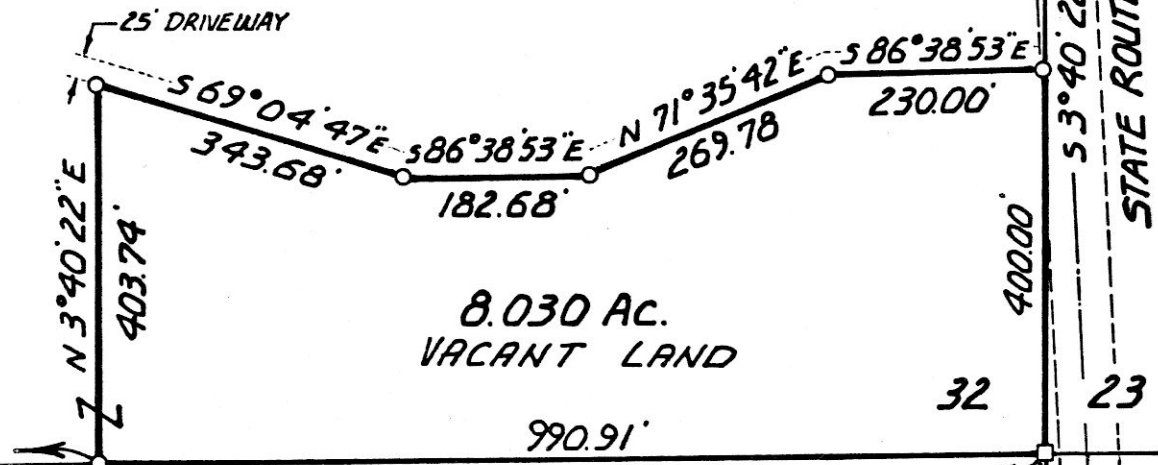


FOX MEADOW

52.634 Ac.  
- 8.030 Ac.  
44.604 Ac.

DEED VOL. 233  
PAGE. 537

ANN E. FLEMING  
DEED VOL. 222 PG. 882



8.030 AC.  
VACANT LAND

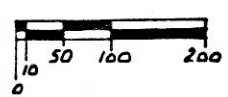
L.H. & E. WOLFE  
DEED VOL. 164 PG. 135

STONE  
44' WEST  
OF C. S.R. 754

N



1" = 200'



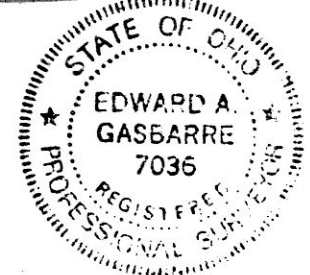
- — No. 5 REBAR SET: 30" LONG WITH I.D. CAP.
- — IRON PIN FOUND
- ▲ — RAILROAD SPIKE FOUND
- — STONE WITH CUT CROSS FOUND

BEARINGS FROM SURVEY ON FILE  
BY WILLIAM H. LONG DATED 11-9-83

rec'd. APR 24 1987  
Recorded APR 27 1987  
Plat Vol. 10

155704

At 2:32 O'CLOCK PM  
Holmes Co. Ohio Fee: 9:35  
Pg. 730 Recorder: Richard Heaver  
11x17x5  
Deed 234  
Page 961



I CERTIFY THIS PLAT TO BE CORRECT TO THE BEST OF MY KNOWLEDGE.

Edward A. Gasbarre  
EDWARD A. GASBARRE P.S. 7036  
R.W. GASBARRE & ASSOCIATES INC.  
SURVEYING & MAPPING  
P.O. BOX 44 (401 S. MARKET STREET)  
WOOSTER, OHIO 44691  
PH. 216-264-9499

COMPLETED: 11<sup>th</sup> DEC. 1986