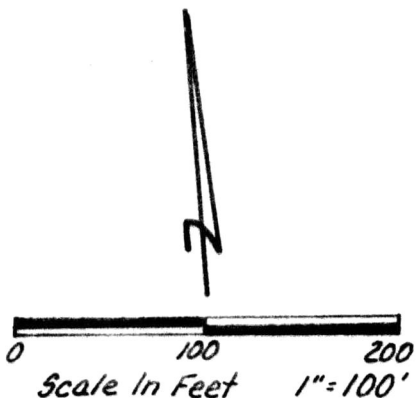


MAP OFFICE COPY

MONROE TOWNSHIP
HOLMES COUNTY, OHIO
LOT 32, 1ST QTR., T-9N, R-8W

SW Cor. Beckett's Porch
NE 13.0'
24" Maple N. 4.0'



This 1.149 Ac. plat is approved for residential wastewater.

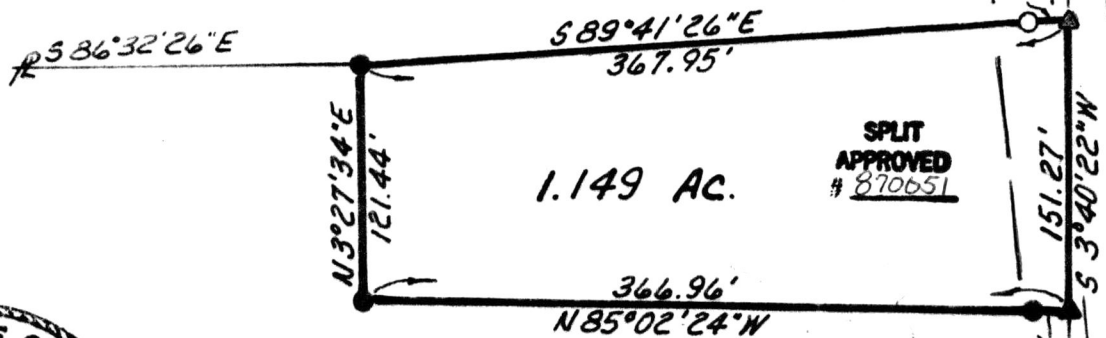
Mat Mall
Sanitarian

4-17-87
Date

Reference Plat Vol. 9, Pg. 214
Bearings From Same

- Iron Pin Fd.
- Stone Fd.
- ▲ R.R. Spike Fd.
- I.P. Set - 5/8" Bar w/
Cap Marked "LONG-6505"

Grantor:
Kathleen Walkorow
Vol 222, Pg. 878



1.149 AC.

SPLIT
APPROVED
870651

Fox Meadow, An Ohio Partnership
Vol. 233, Pg. 537

Deed vol 234 Pg 914

155656



Rec'd. APR 22 1987

Recorded APR 22 1987

AT 9:50 O'CLOCK AM
Holmes Co, Ohio Fee: 5.00

I Certify This Survey To Be Correct To The Best Of My Knowledge.

William H. Long March 13, 1987
William H. Long R.S. 6505
13301 T.R. 503
Big Prairie, Ohio 44611

Plat No. 126 Recorder *Richard Gruen*
RR

Stone Fd. S.E. Cor Lot 32

32 23

1/2 Rd. E. 44.0
Fence Cor E. 22.0'
24" W. Cherry S. 3.0

31 24

