

# SURVEY PLAT of a 0.337 ACRE PARCEL

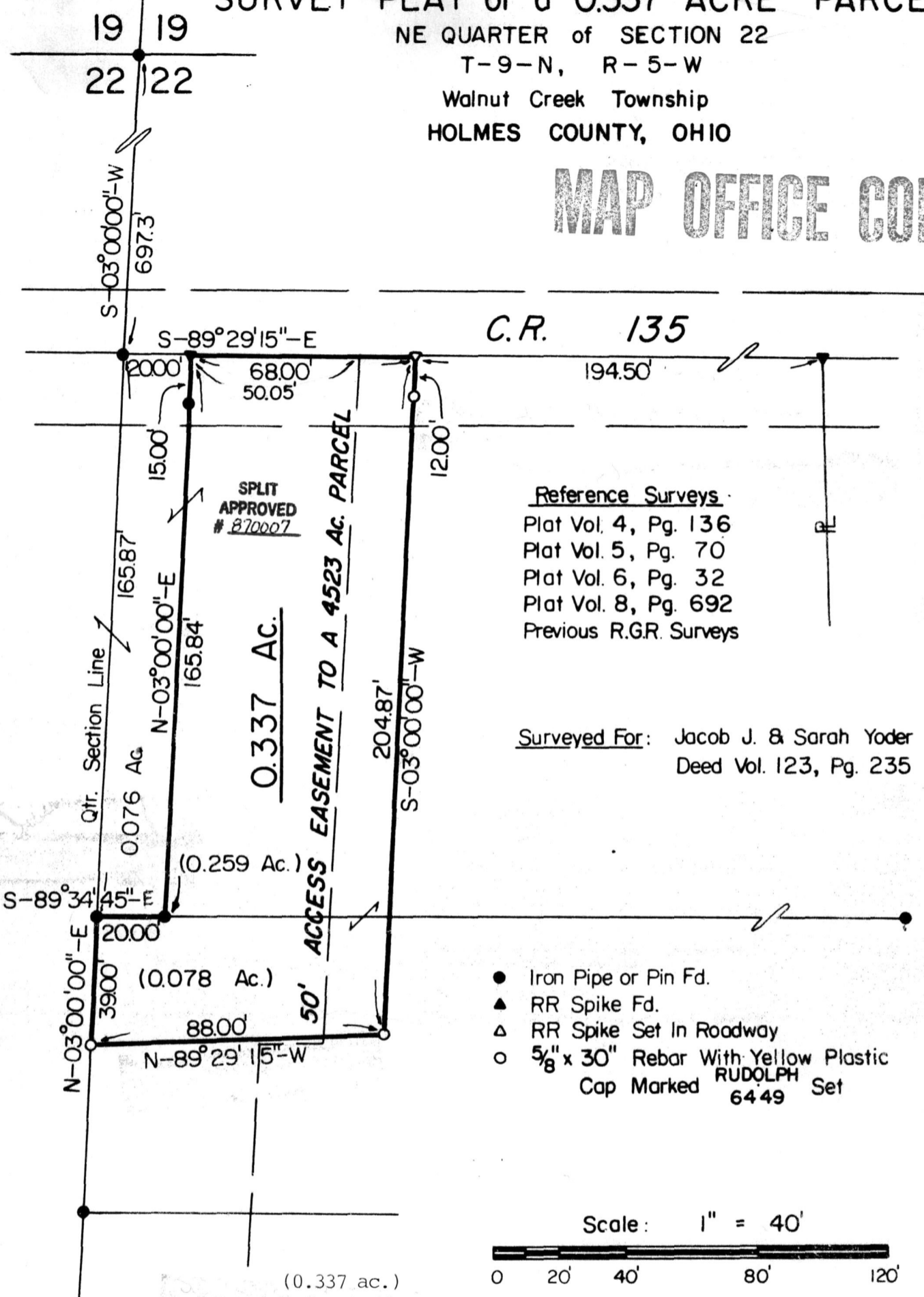
NE QUARTER of SECTION 22

T-9-N, R-5-W

Walnut Creek Township

HOLMES COUNTY, OHIO

## MAP OFFICE COPY



Reference Surveys  
 Plat Vol. 4, Pg. 136  
 Plat Vol. 5, Pg. 70  
 Plat Vol. 6, Pg. 32  
 Plat Vol. 8, Pg. 692  
 Previous R.G.R. Surveys

Surveyed For: Jacob J. & Sarah Yoder  
 Deed Vol. 123, Pg. 235

- Iron Pipe or Pin Fd.
- ▲ RR Spike Fd.
- △ RR Spike Set In Roadway
- 5/8" x 30" Rebar With Yellow Plastic Cap Marked RUDOLPH 6449 Set

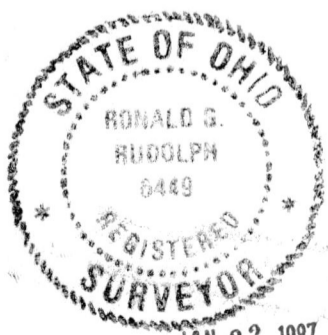
Scale: 1" = 40'



(0.337 ac.)  
 This plat not approved for any use that generates wastewater.

*mat mill 1-21-87*  
 Sanitarian

Date 1-23-87 Certify This Survey And Plat To Be Correct To The Best Of My Knowledge.



Date 1-23-87  
 Ronald G. Rudolph P.S. No. 6449  
 R. G. RUDOLPH SURVEYING, Inc.  
 405 W. Liberty St.  
 Wooster, Ohio 44691

JAN 22 1987  
 Rec'd. At 3:08 Pm Job No. 2551  
 Recorded JAN 23 1987 Holmes Co. Ohio Fee: 5.00  
 Plat Vol. 10 Pg. 692 Recorder Richard Green