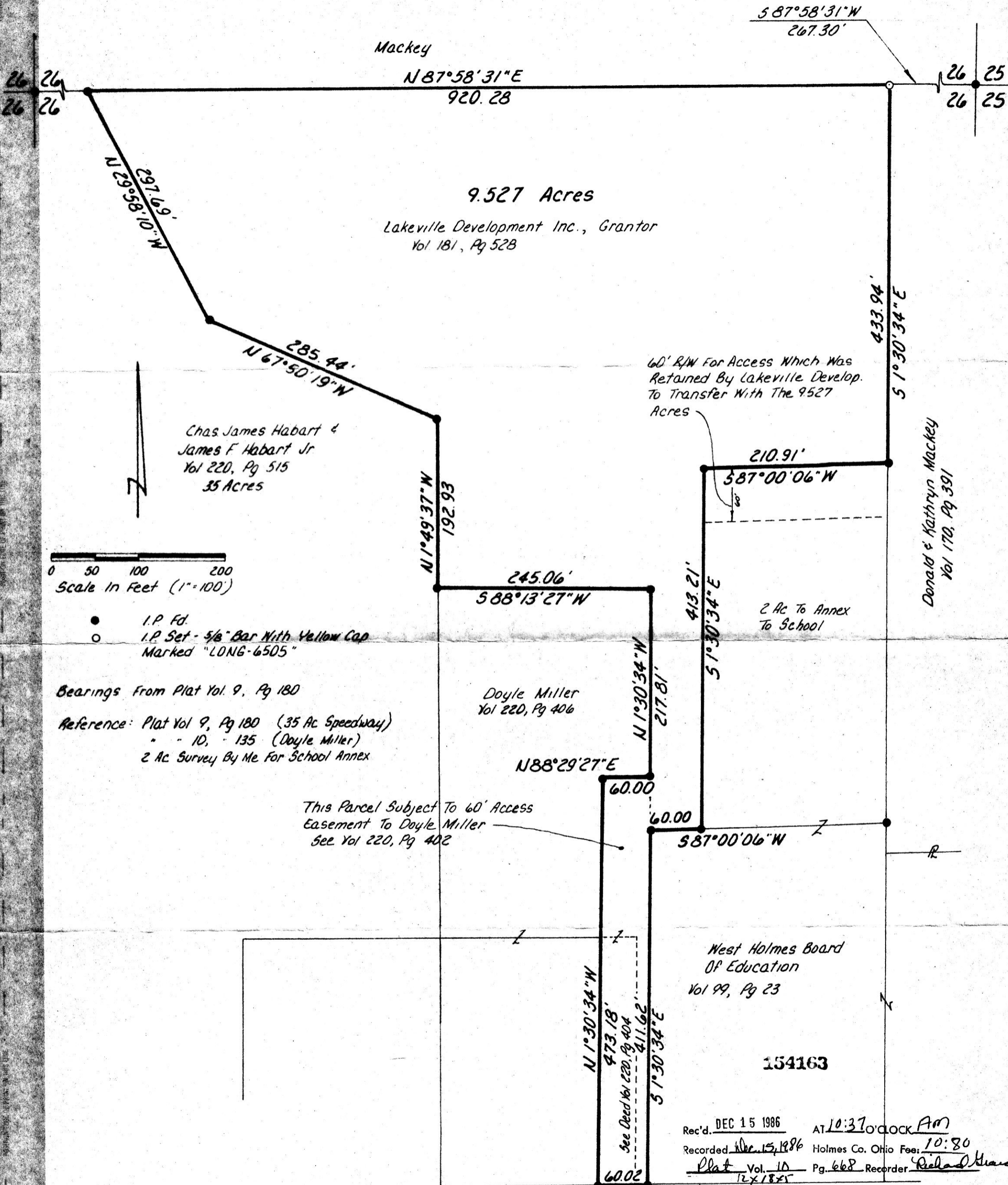


154163  
WASHINGTON TOWNSHIP  
HOLMES COUNTY, OHIO  
SOUTHEAST QUARTER, SECTION 26, T-20N, R-15W



0 50 100 200  
Scale In Feet (1"=100')

- I.P. Fd.
- I.P. Set - 5/8" Bar With Yellow Cap Marked "LONG-6505"

Bearings From Plat Vol. 9, Pg 180  
Reference: Plat Vol 9, Pg 180 (35 Ac Speedway)  
" " 10, " 135 (Doyle Miller)  
2 Ac Survey By Me For School Annex

I Certify This Plat To Be Correct To The Best  
Of My Knowledge.  
William H. Long Sept. 5, 1984  
William H. Long O.R.S. 6505  
13301 T.R. 503  
Big Prairie, Ohio 44611

Village Of Lakeville

MAP OFFICE COPY