

# PROPOSED ANNEXATION

TO THE  
VILLAGE OF KILLBUCK

PART OF THE S.E. & S.W. QUARTERS SEC. 6  
T-8N, R-7W, KILLBUCK TWP., HOLMES Co., OHIO

7.0084 AC. IN THE S.E. QTR. SEC. 6  
4.0513 AC. IN THE S.W. QTR. SEC. 6  
11.0597 TOTAL ACRES TO BE ANNEXED

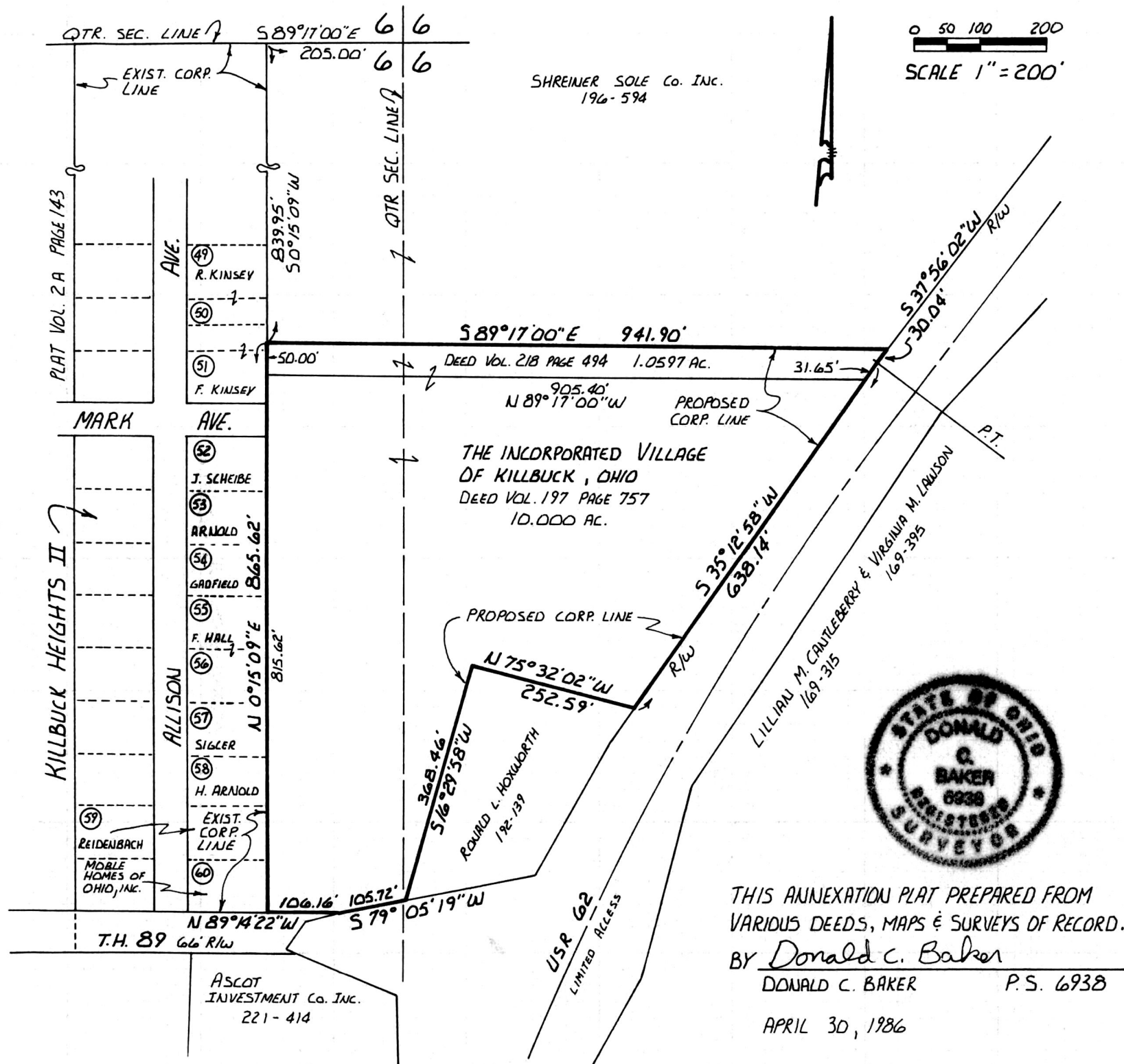
I HEREBY CERTIFY THAT THE HOLMES COUNTY COMMISSIONERS  
HAVE APPROVED THIS ANNEXATION AT A MEETING HELD ON  
THE 25 DAY OF August, 1986.  
BY Robert Lee  
CHAIRMAN, HOLMES COUNTY COMMISSIONERS

I HEREBY CERTIFY THAT THIS PLAT FOR ANNEXATION WAS  
APPROVED BY THE VILLAGE COUNCIL OF KILLBUCK, OHIO AT A  
MEETING HELD ON THE 13<sup>th</sup> DAY OF May, 1986.  
BY Dwight B. Feltz  
VILLAGE CLERK

153811  
RECEIVED FOR RECORDING THIS 18 DAY OF Nov  
1986 AT 11:02AM AND WAS RECORDED, PLAT BOOK 10  
PAGE 652.  
BY Richard GRAVEN  
RECORDER, HOLMES COUNTY, OHIO  
Fee: 5.00

0 50 100 200  
SCALE 1" = 200'

SHREINER SOLE Co. INC.  
196-594



THIS ANNEXATION PLAT PREPARED FROM  
VARIOUS DEEDS, MAPS & SURVEYS OF RECORD.

BY Donald C. Baker  
DONALD C. BAKER P.S. 6938

APRIL 30, 1986

