

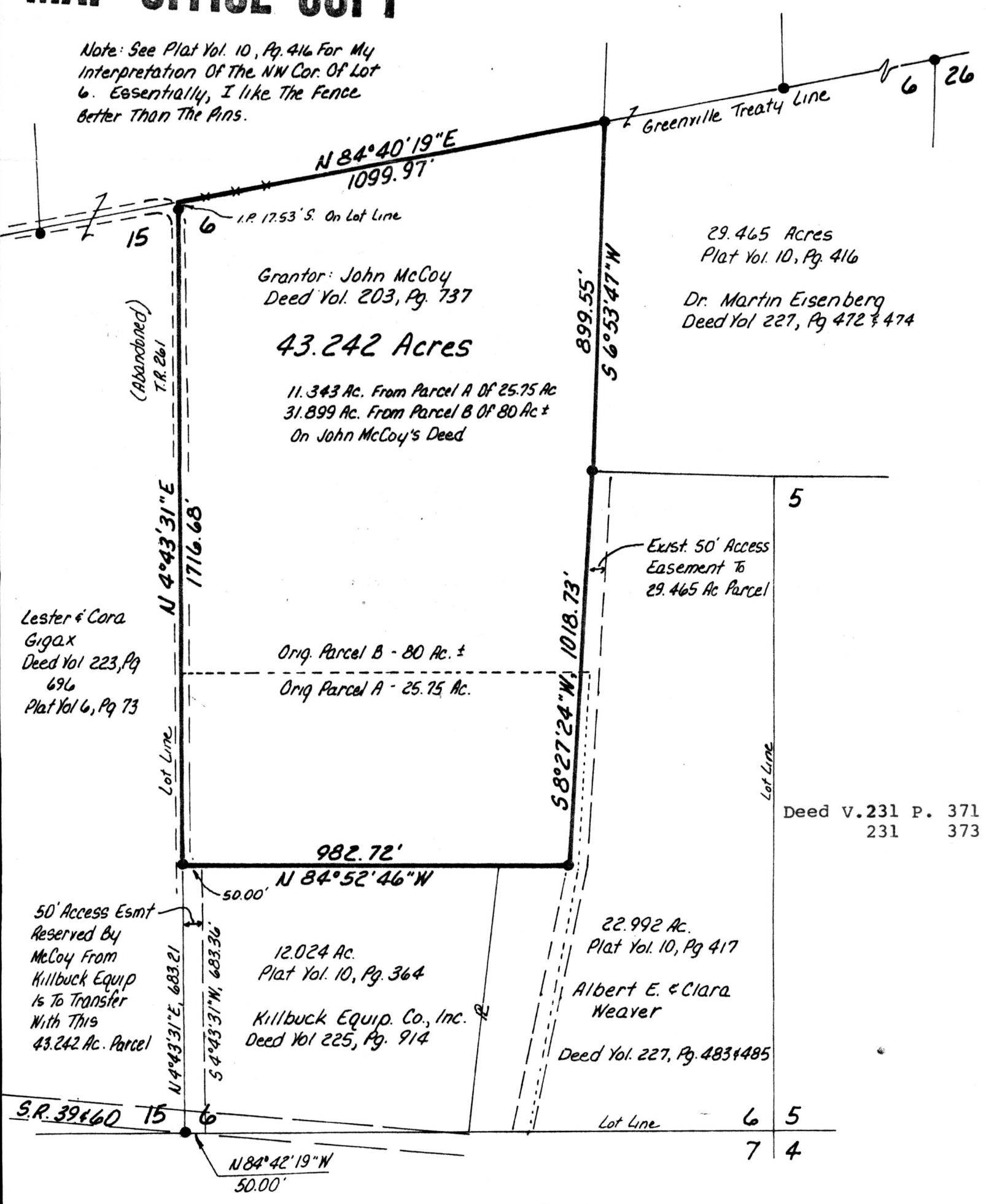
MONROE TOWNSHIP
HOLMES COUNTY, OHIO
LOT 6, 2nd QTR. T-9N, R-8W

● Iron Pin Found

Bearings From Plat Vol 10, Pg 364

MAP OFFICE COPY

Note: See Plat Vol. 10, Pg. 416 For My Interpretation Of The NW Cor. Of Lot 6. Essentially, I like The Fence Better Than The Pins.



Grantor: John McCoy
Deed Vol. 203, Pg. 737

43.242 Acres

11.343 Ac. From Parcel A Of 25.75 Ac
31.899 Ac. From Parcel B Of 80 Ac ±
On John McCoy's Deed

29.465 Acres
Plat Vol. 10, Pg. 416

Dr. Martin Eisenberg
Deed Vol 227, Pg 472 & 474

Lester & Cora
Gigax
Deed Vol 223, Pg
696
Plat Vol 6, Pg 73

Orig. Parcel B - 80 Ac. ±
Orig. Parcel A - 25.75 Ac.

Exst. 50' Access
Easement To
29.465 Ac Parcel

50' Access Esmt
Reserved By
McCoy From
Killbuck Equip
Is To Transfer
With This
43.242 Ac. Parcel

12.024 Ac.
Plat Vol. 10, Pg. 364
Killbuck Equip. Co., Inc.
Deed Vol 225, Pg. 914

22.992 Ac.
Plat Vol. 10, Pg 417
Albert E. & Clara
Weaver
Deed Vol. 227, Pg. 483 & 485

I Certify This Survey To Be Correct To The Best Of My Knowledge

William H. Long April 4, 1986

William H. Long R.S. 6505
13301 T.R. 503
Big Prairie, Ohio 44611

Rec'd. JUN 6 1986 AT 10:32 O'CLOCK A.M.

Recorded JUN 6 1986 Holmes Co. Ohio Fees \$5.00

Plat Vol. 10 Pg. 570 Recorder Richard

Plz Drawn am