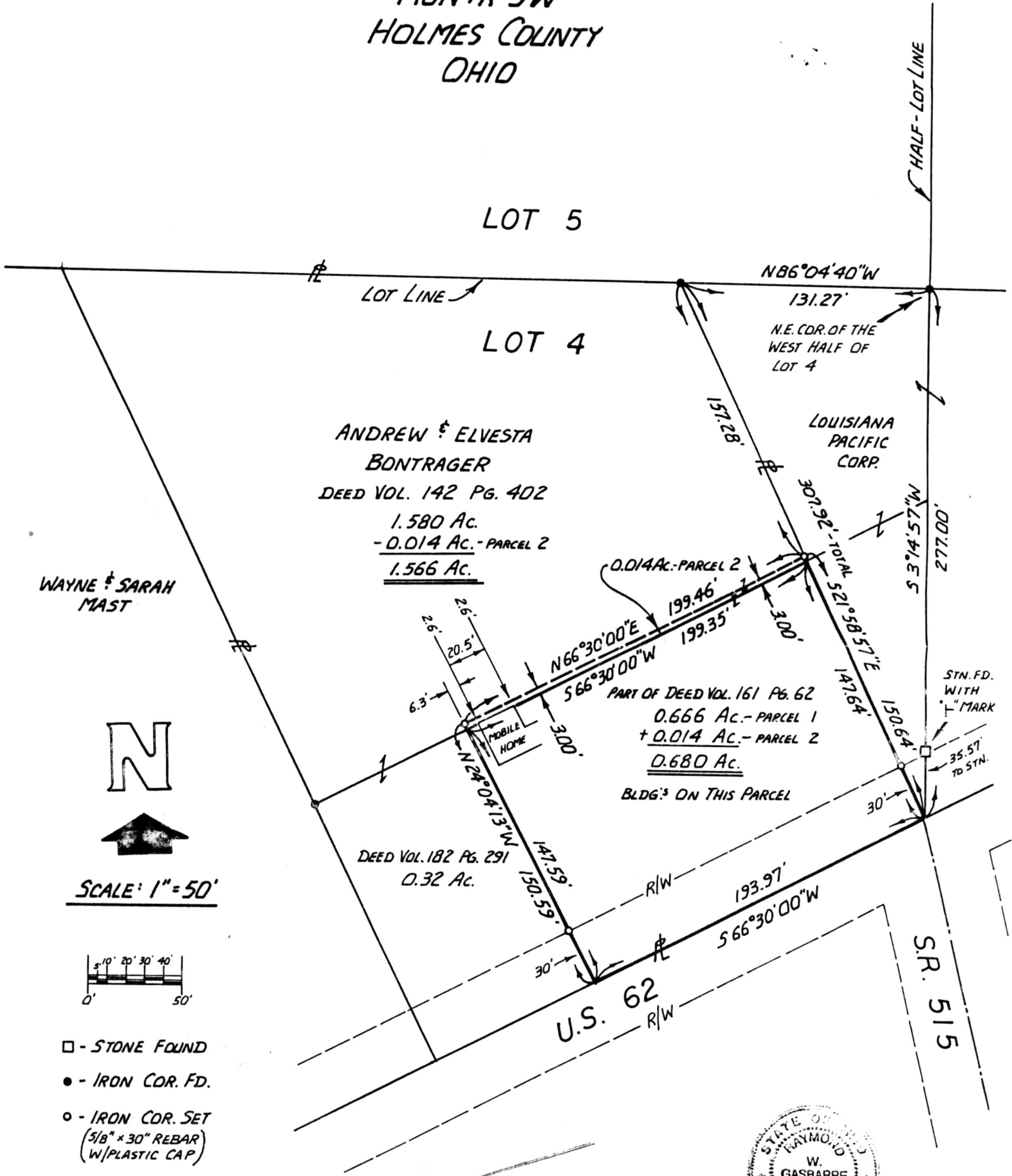


PAINT TOWNSHIP
PART OF THE WEST HALF OF LOT 4 (4TH QTR.)
T-10N; R-5W
HOLMES COUNTY
OHIO



ANDREW & ELVESTA
BONTRAGER
DEED VOL. 142 PG. 402
1.580 Ac.
- 0.014 Ac. - PARCEL 2
1.566 Ac.

LOUISIANA
PACIFIC
CORP.
0.014 AC. - PARCEL 2
199.46'
199.35'
300'
PART OF DEED VOL. 161 PG. 62
0.666 AC. - PARCEL 1
+ 0.014 AC. - PARCEL 2
0.680 Ac.
BLDG'S ON THIS PARCEL

DEED VOL. 182 PG. 291
0.32 Ac.



I CERTIFY THIS SURVEY TO BE CORRECT
TO THE BEST OF MY KNOWLEDGE.

(COMPLETED: APRIL 29, 1986)

RAY W. GASBARRE P.S. 4153
R.W. GASBARRE & ASSOC. INC.
P.O. BOX 44 - 401 S. MARKET ST.
WOOSTER, OHIO 44691
(216) 264-9499

151384

Rec'd. MAY 12 1986 AT 4:04 O'CLOCK PM
Recorded May 13, 1986 Holmes Co. Ohio Fee: 5.00
Plot Vol. 10 Pg. 561 Recorder Richard Mearns
Deed Vol. 231-Pg. 123

MAP OFFICE COPY