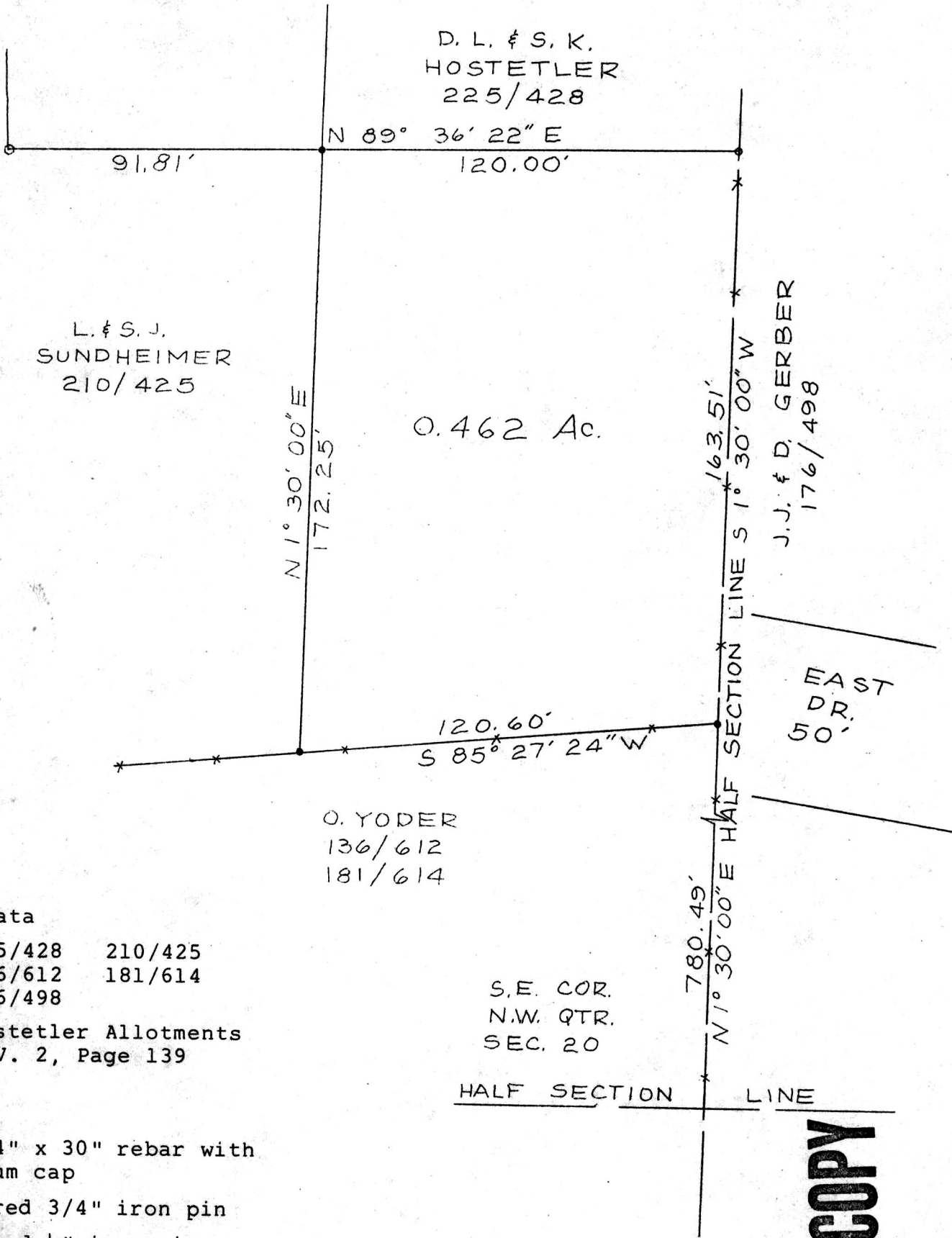


Bearings based on Deed 176/898



Research Data

Deeds: 225/428 210/425
 136/612 181/614
 176/498

Plats: Hostetler Allotments
 P.V. 2, Page 139

S.E. COR.
 N.W. QTR.
 SEC. 20

HALF SECTION LINE

- = set 3/4" x 30" rebar with aluminum cap
- = recovered 3/4" iron pin
- = recovered 1/2" iron pin
- +— = existing fence

148479

REC'D. September 9, 1985
 AT 10:32 O'CLOCK 9 a.m

RECORDED September 10, 1985

Plat VOL 10 PG. 471

Holmes Co. Ohio Fee: 5.00

Richard Shaver Recorder

Deed Vol. 228-Pg. 669



BOUNDARY SURVEY

FOR

DAVID HOSTETLER

IN

SECTION 20

RANGE 5W, TOWNSHIP 9N

WALNUT CREEK TOWNSHIP

HOLMES COUNTY

OHIO

MAP OFFICE COPY

Scale: 1" = 40'

December 12, 1984

Produced By

G. A. STEWART INC.

450 South Fourth St. (614) 622-2783
 COSHOCTON, OHIO 43812

R. Scott Johnson
 Registered Surveyor #6791