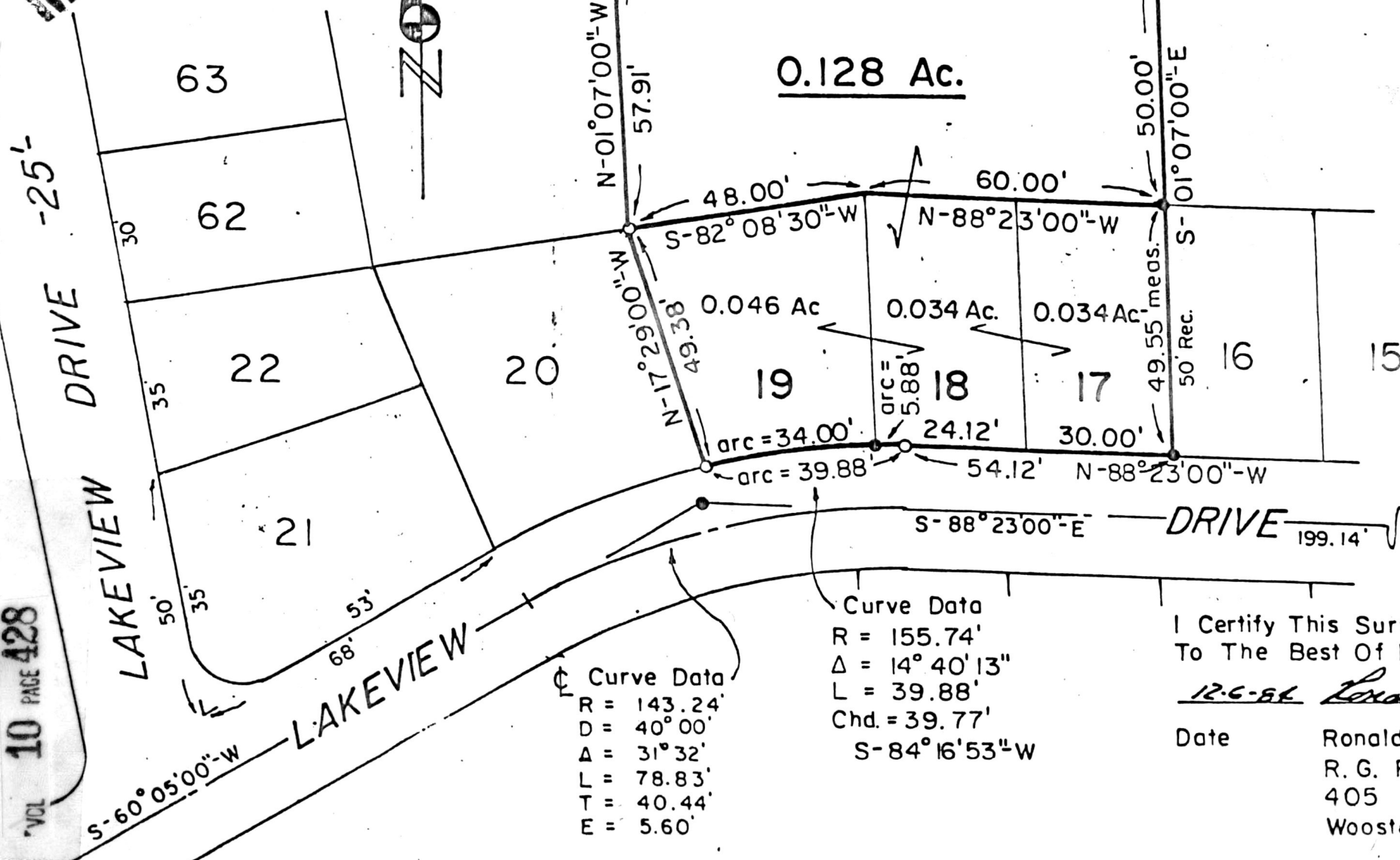
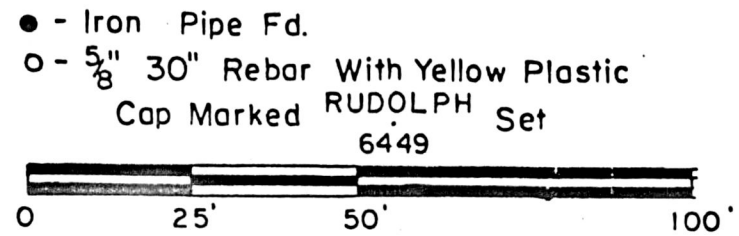


Scale
1" = 30'

MAP OFFICE COPY

147521

SURVEY PLAT
OF
LAKEVIEW PARK on LAKE ODELL
Subdivision No. 2
LOTS 17, 18^r and 19
AND
A 0.128 ACRE PARCEL
SW QUARTER SECTION 25
T-20-N, R-15-W
Washington Township
HOLMES COUNTY, OHIO



Surveyed For : Larry Myerchin
147521
JUN 21 1985
REC'D. AT 3:41 O'CLOCK PM
RECORDED June 24, 1985
Plat VOL 10 PG. 428
Holmes Co. Ohio Fee \$5.00
Richard G. Rudolph Recorder
Deed Vol. 227-Pg. 775

Curve Data
R = 358.10'
D = 16° 00'
Δ = 18° 28'
L = 115.42'
T = 58.21'
E = 4.70'

Curve Data
R = 143.24'
D = 40° 00'
Δ = 31° 32'
L = 78.83'
T = 40.44'
E = 5.60'

Curve Data
R = 155.74'
Δ = 14° 40' 13"
L = 39.88'
Chd. = 39.77'
S-84° 16' 53"-W

I Certify This Survey And Plat To Be Correct To The Best Of My Knowledge.

12-6-84 *Ronald G. Rudolph*

Date Ronald G. Rudolph - Reg. Surv. 6449
R. G. RUDOLPH SURVEYING, Inc.
405 W. Liberty St.
Wooster, Ohio 44691



Job No. 1645

VOL 10 PAGE 428