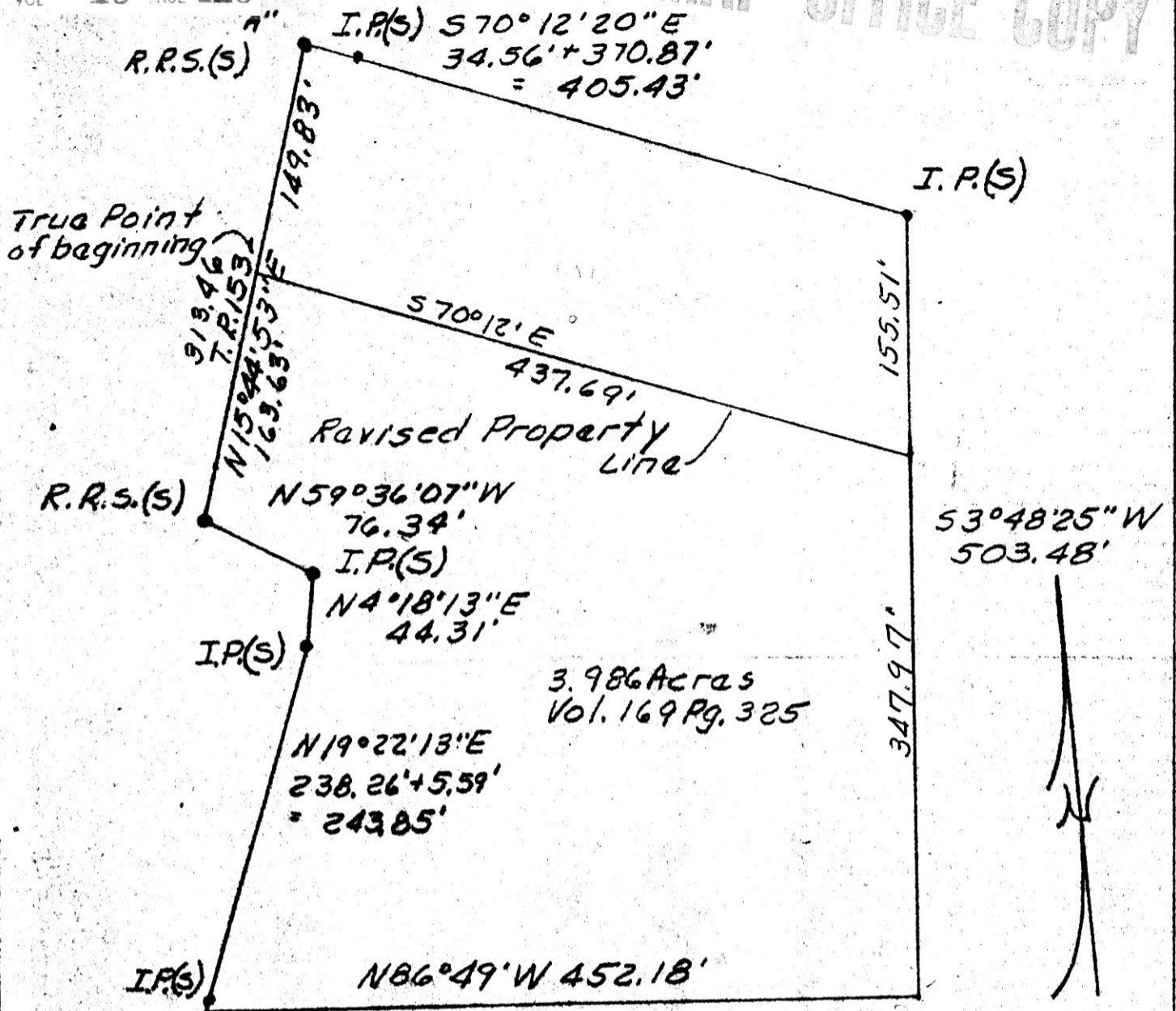


MAP OFFICE COPY



Point A is S 86° 17' E 1472.92', S 22° 15' W 211.50',
 S 14° 0' W 229.70', S 22° 24' 31" W 71.83', & S 14° 55'
 53" W 283.20' from NW cor NW 1/4 S 17 T 9 N R 6 W.
 Scale: 1" = 100'



PLAT OF A SURVEY FOR
 WALLACE C. LOWE
 Grantor
 NW 1/4 S 17, T 9 N, R 6 W
 Hardy Twp., Hol. Co., Ohio
 Robert L. Kasner P.S. 5193

For correction of plat Vol. 7 pg 550

MAY 20 1985
 rec'd. AT 2:51 O'CLOCK PM
 recorded May 21, 1985 Holmes Co. Ohio Fee: 6.00
 Plat Vol. 10 Pg. 410 Recorder Richard Draney
 Deed Vol. 227-Pg. 322