

Cor. Post Laid Over.
Drove Steel Fence Post in
N.W. Cor.
S.E. Qtr.
Sec. 1
T-8N R9W
Richland

CONRAIL TO GRAY SURVEY
S. E. QUARTER SECTION 1
TOWNSHIP 8N RANGE 9W
RICHLAND TOWNSHIP
HOLMES COUNTY, OHIO
COMPLETED APRIL 11, 1981

145361

DEC 13 1984

REC'D. AT 2:03 O'CLOCK P.M.

RECORDED December 14, 1984

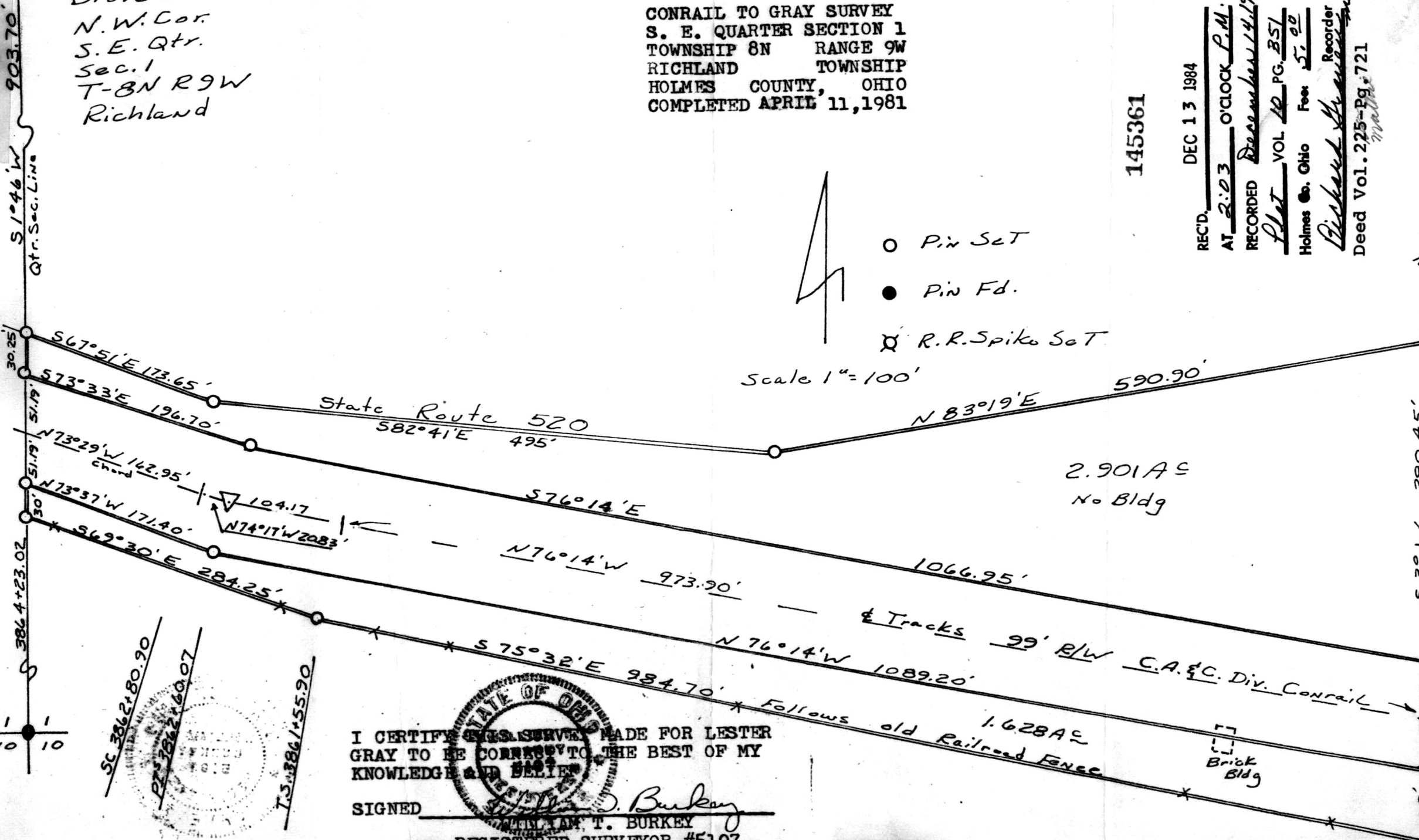
PLAT VOL 10 PG. 351

Holmes Co. Ohio Fee \$5.00

Richard Strickland Recorder

Deed Vol. 225-Pg. 721

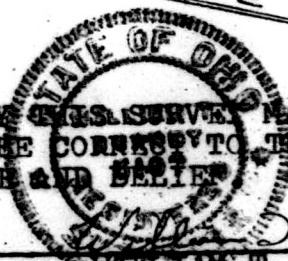
MAP OFFICE COPY



SC 3862+80.90
 P 3862+60.07
 T 3861+55.90

I CERTIFY THIS SURVEY MADE FOR LESTER GRAY TO BE CORRECT TO THE BEST OF MY KNOWLEDGE AND BELIEF

SIGNED



WILLIAM T. BURKEY
 REGISTERED SURVEYOR #5107