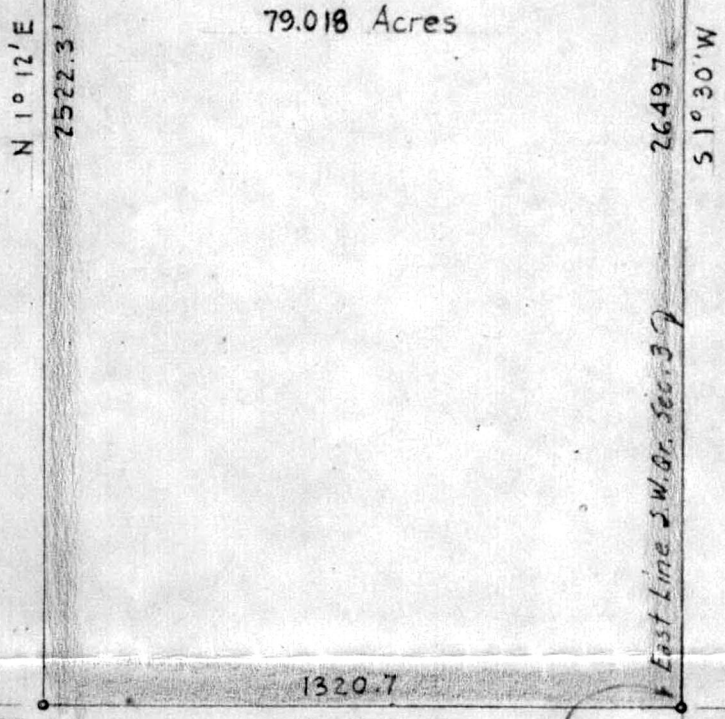


145200

NOV 30 1984

REC'D. \_\_\_\_\_  
AT 1:14 O'CLOCK 1:30  
RECORDED December 3, 1984  
Plat VOL 10 PG. 339  
Holmes Co. Ohio Fee: 5.00  
Richard Strawn Recorder  
Deed Vol 225-Pg. 603  
*and*  
*privilege*



79.018 Acres



MAP  
SHOWING LOCATION  
W — OF — E  
A PARCEL OF LAND  
ON THE  
MANCHESTER FARM  
Section 3, Township 8 Range 4  
Richland Township Holmes County  
Ohio

Scale 1" = 400 ft. May 1957

Drawn by and  
certified correct



MAP OFFICE COPY