

RIPLEY TOWNSHIP  
 HOLMES COUNTY, OHIO  
 SW QTR. SECTION 7, T-17N, R-14W



- I.P. Found
  - I.P. Set 5/8" Bar With Yellow Cap Marked "LONG-6505"
  - △ R.R. Spike Set
- Bearings Assumed

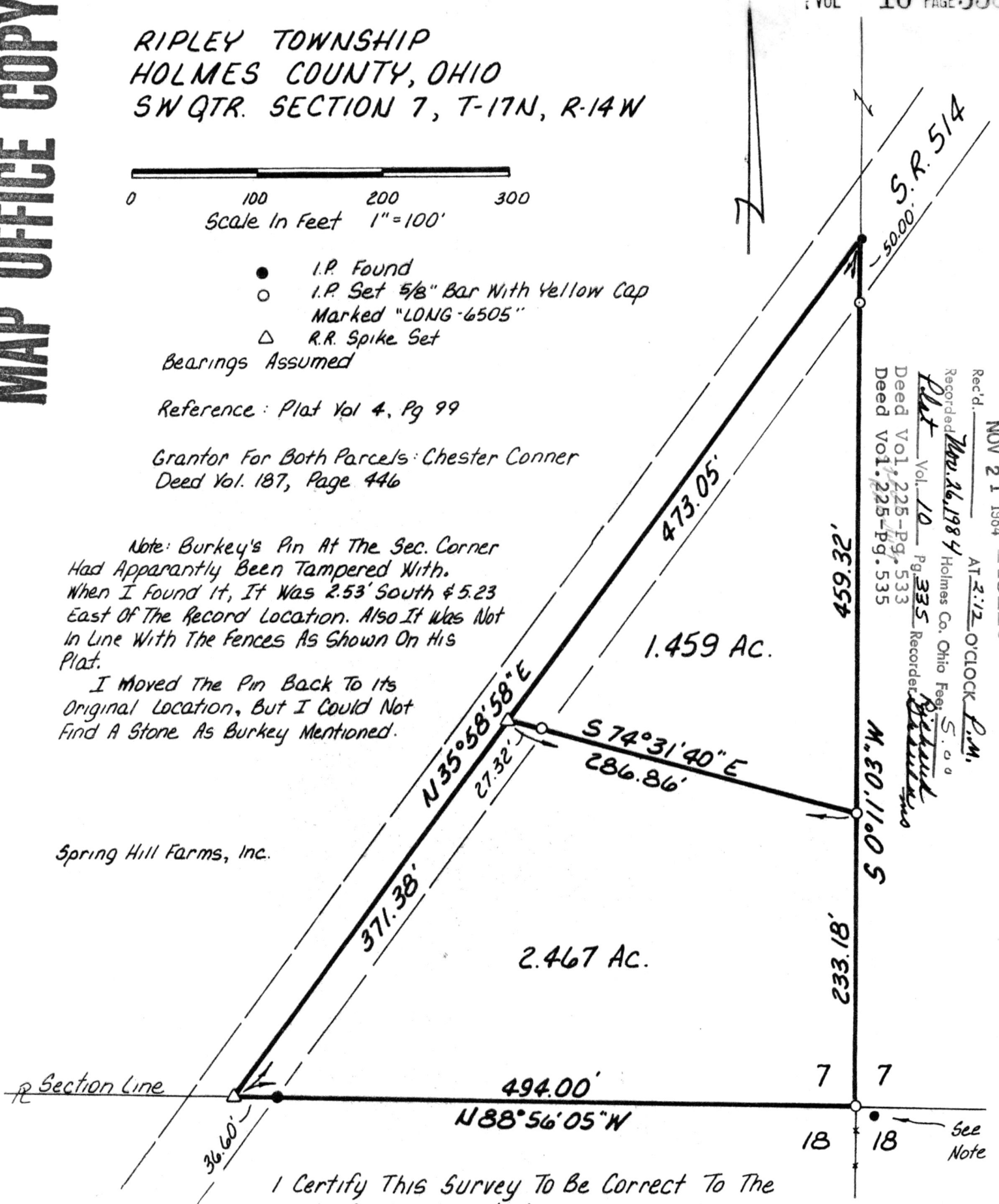
Reference: Plat Vol 4, Pg 99

Grantor For Both Parcels: Chester Conner  
 Deed Vol. 187, Page 446

Note: Burkey's Pin At The Sec. Corner Had Apparently Been Tamped With. When I Found It, It Was 2.53' South & 5.23' East Of The Record Location. Also It Was Not In Line With The Fences As Shown On His Plat.

I Moved The Pin Back To Its Original Location, But I Could Not Find A Stone As Burkey Mentioned.

Spring Hill Farms, Inc.



Rec'd. NOV 21 1984 145116  
 AT 2:12 O'CLOCK P.M.  
 Recorded Nov 16, 1984 Holmes Co. Ohio Fee \$ .00  
 Plat Vol. 10 Pg. 335 Recorder Richard  
 Deed Vol. 225-Pg. 533  
 Deed Vol. 225-Pg. 535

I Certify This Survey To Be Correct To The  
 Best Of My Knowledge  
William H. Long Oct. 1, 1984  
 William H. Long R.S. 6505

MAP OFFICE COPY