

Surveyed For William Hill

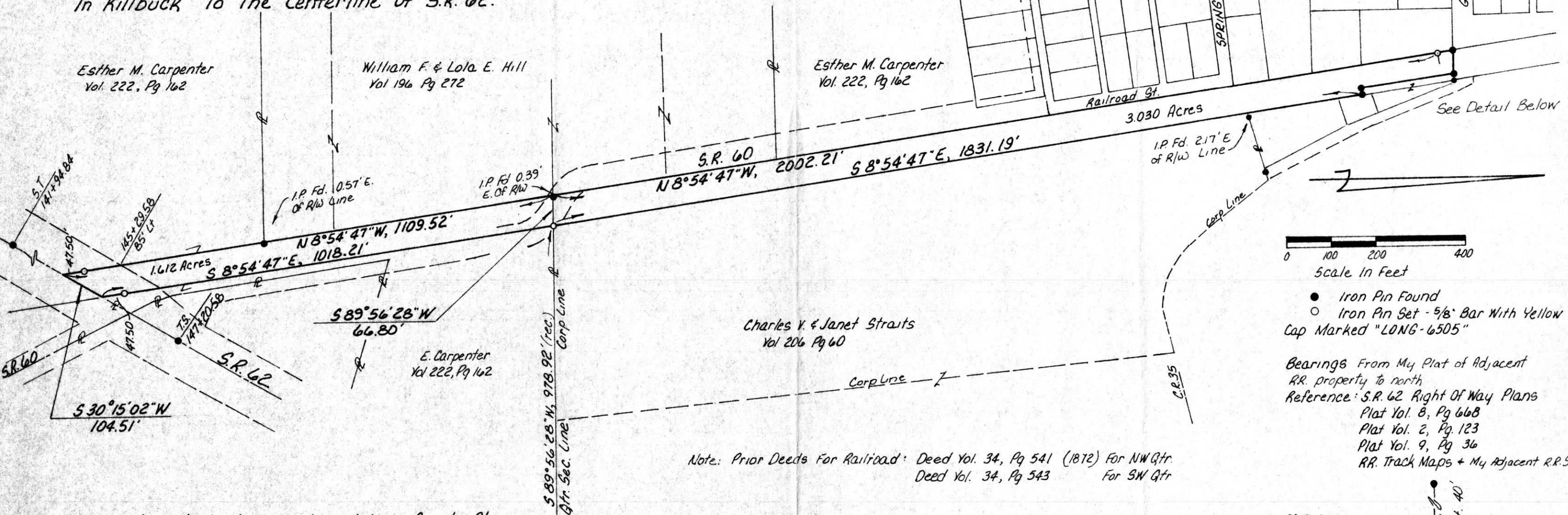
144503

A Survey Of The Dresden Branch Of The C. A. & C Railroad (Now Conrail) From The S. Right Of Way Line For Grover St. In Killbuck To The Centerline Of S.R. 62.

Esther M. Carpenter
Vol. 222, Pg 162

William F. & Lola E. Hill
Vol 196 Pg 272

Esther M. Carpenter
Vol. 222, Pg 162



Charles V. & Janet Straits
Vol 206 Pg 60

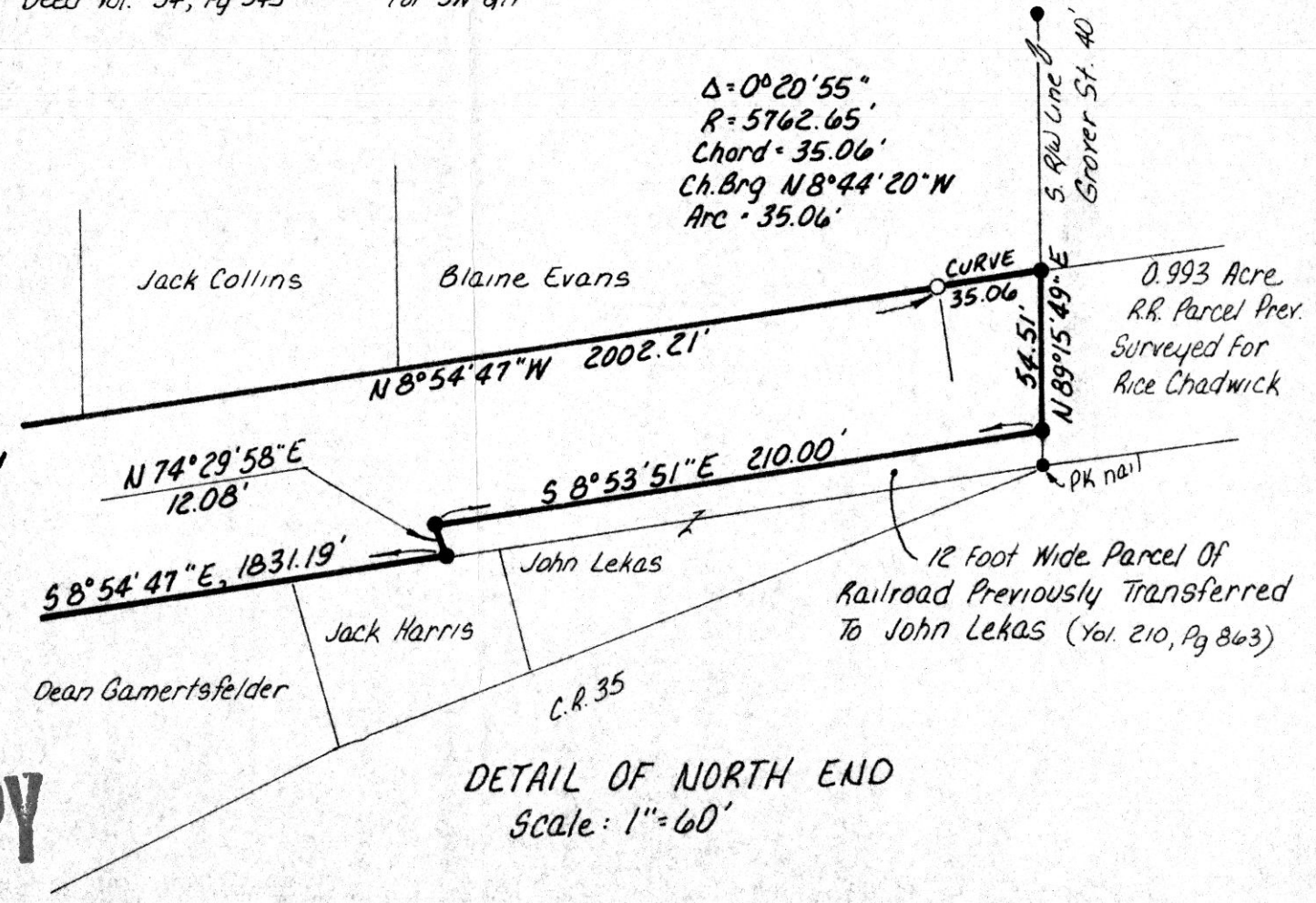
Note: Prior Deeds For Railroad: Deed Vol. 34, Pg 541 (1872) For NW Qtr.
Deed Vol. 34, Pg 543 For SW Qtr

Situated In Killbuck Township, Holmes County, Ohio
SW & NW Qtrs, Section 15, T-8N, R-7W
The Part In The NW Qtr. Is In The Village Of Killbuck

Acres In SW Qtr (Township) : 1.612 Acres
 Acres In NW Qtr (Village) : 3.030 Acres
 Total : 4.642 Acres

144503

REC'D. SEP 25 1984
 AT 3:30 O'CLOCK P.M.
 RECORDED September 26 1984
 Plat VOL. 10 PG. 314
 Holmes Co. Ohio Fee: 10.80
 Recorder
 Deed Vol. 224-Pg. 314 18 X 12 X 5



I Certify This Survey To Be Correct To The Best Of My Knowledge
 William H. Long May 18, 1984
 William H. Long R.S. 6505
 13301 T.R. 503
 Big Prairie, Ohio 44611

MAP OFFICE COPY

E VOL 10 PAGE 314