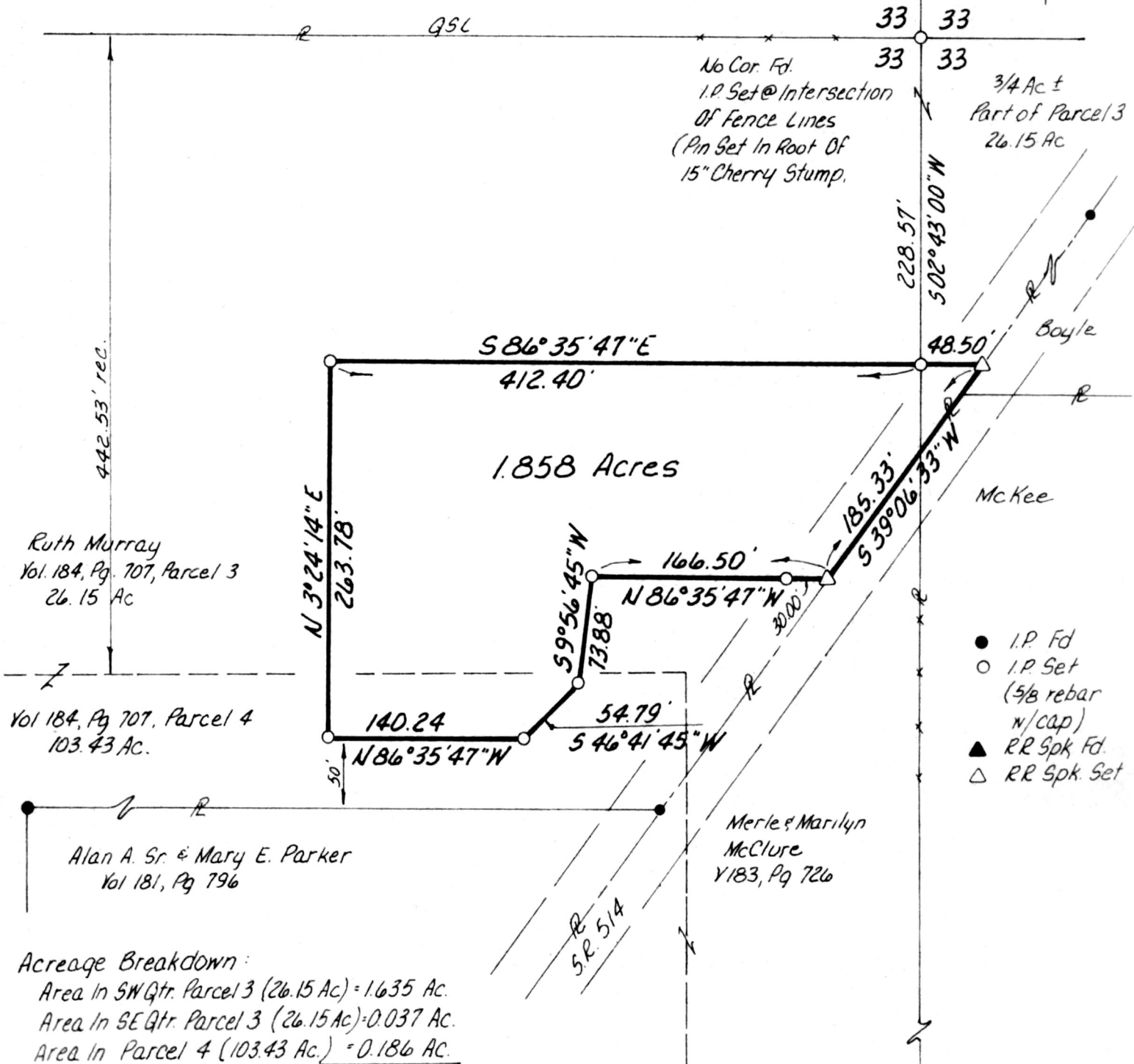
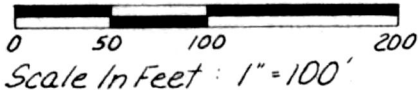


RIPLEY TOWNSHIP
 HOLMES COUNTY, OHIO
 SE & SW QTRS, SECTION 33, T-18N, R-14W

Surveyed For Curt Murray



Acreeage Breakdown:
 Area In SW Qtr. Parcel 3 (26.15 Ac) = 1.635 Ac.
 Area In SE Qtr. Parcel 3 (26.15 Ac) = 0.037 Ac.
 Area In Parcel 4 (103.43 Ac.) = 0.186 Ac.
 Total = 1.858 Ac.

I Certify This Plat To Be Correct To
 The Best Of My Knowledge
 William H Long March 16, 1983
 William H. Long R.S. 6505
 RD 1 Box 69A
 Big Prairie, Ohio, 44611

144270
 REC'D. SEP 6 1984
 AT 12:51 O'CLOCK A.M.
 RECORDED September 7, 1984
 Plat VOL. 10 PG. 303
 Holmes Co. Ohio Fee: 5.00
 Richard Yrauer Recorder

MAP OFFICE COPY