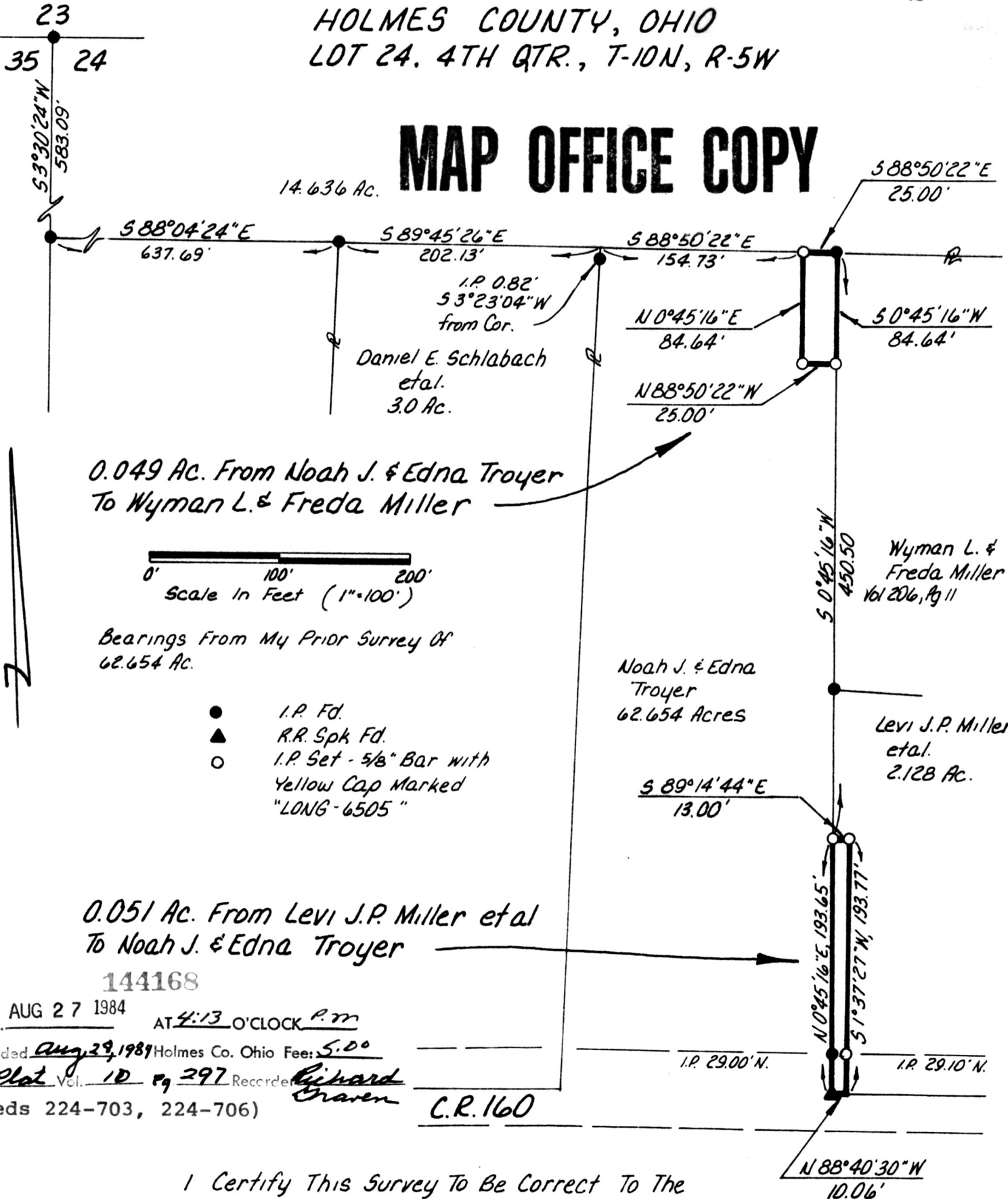


PAINT TOWNSHIP  
HOLMES COUNTY, OHIO  
LOT 24. 4TH QTR., T-10N, R-5W

# MAP OFFICE COPY



0.049 Ac. From Noah J. & Edna Troyer  
To Wyman L. & Freda Miller

0' 100' 200'  
Scale in Feet (1"=100')

Bearings From My Prior Survey Of  
62.654 Ac.

- I.P. Fd.
- ▲ R.R. Spk Fd.
- I.P. Set - 5/8" Bar with Yellow Cap Marked "LONG-6505"

0.051 Ac. From Levi J.P. Miller et al  
To Noah J. & Edna Troyer

144168

Rec'd. AUG 27 1984 AT 4:13 O'CLOCK P.M.  
Recorded Aug 29, 1984 Holmes Co. Ohio Fee: 5.00  
Plot Vol. 10 Pg. 297 Recorded Richard  
Craven  
(Deeds 224-703, 224-706)

C.R. 160

I Certify This Survey To Be Correct To The  
Best Of My Knowledge

William H. Long April 20, 1984  
William H. Long R.S. 6505  
13301 T.R. 503  
Big Prairie, Ohio 44611