

Known as part of Lot 14, 1st Qtr., T9N, R5W, of Walnut Creek Twp., Hol. Co., Ohio and as part of V 127 P410.

PLAT OF A SURVEY FOR ABE. E. MILLER Grantor

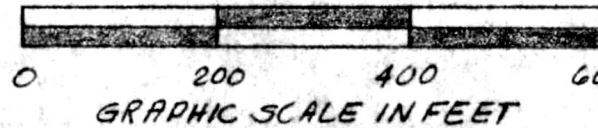
Known as part of Lot 14, 1st. Qtr., T9N, R5W of Walnut Creek Twp., Hol. Co., Ohio

Robert L. Kasner P.S. 5193 P.E. 28820 11/21/83

Beginning at an iron pin set at the S.E. corner of Lot 14; thence with the S. line Lot 14 N88°25'39"W 1,311.09' to a point; thence continuing with the S. line N89°0'0"W 119.62' to an iron pin as per PB 7 P781;

thence leaving the S. line Lot 14 and with the E. line of a 2.27 (PB 7 P781) acre tract N0°11'0"W 259.30' to an iron pin and passing an iron pin at 15.00'; thence S88°28'46"E 1,436.39' to a point on the E. line of Lot 14 from which an iron pin set bears N88°28'46"W 1.00'; thence with the E. line Lot 14 S1°8'20"W 259.30' to the point of beginning and containing 8.5145 acres.

139731



600 Rec'd. Dec. 2, 1983 AT 11:41 O'CLOCK AM

Recorded Dec. 5, 1983 Holmes Co., Ohio Fee: 5.00

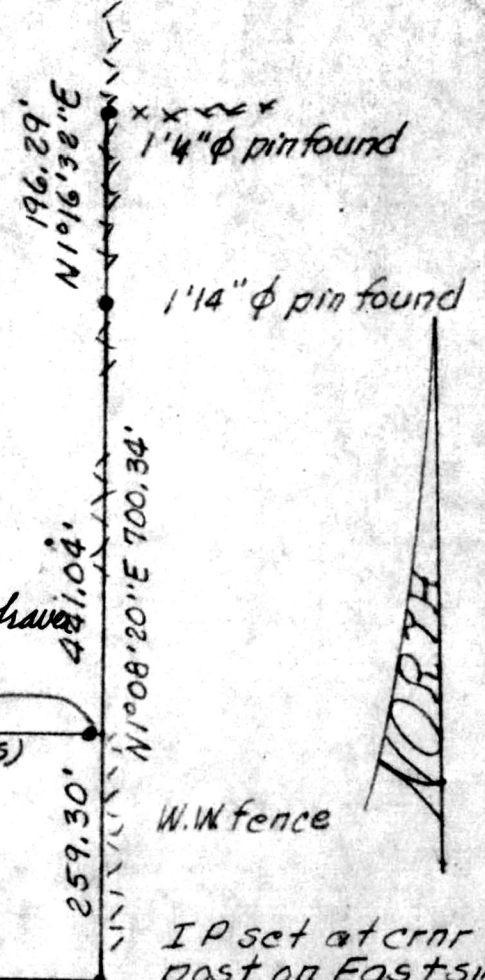
Plat Vol. 10 Pg. 215 Recorder Richard Thayer

(IP(F) Deed Vol. 222; Pg. 252.

S88°28'46"E 1436.39' = 1435.39' + 1.00'

8.5145 Ac. part of V 127 P410

N88°25'39"W 1311.09'



IP set at crnr post on East side stone planted 1918, could not find.

MAP OFFICE COPY

Handwritten notes: 2.27 acre tract PB 7 P781 IP(PB 7 P781) 383.00; 15.00' + 244.30' N0°11'0"W; 119.62' IP(F); 822.00' IP(PB 7 P781); 389°0'0"E; 80 P72 1324.62; 5 R 5 P 83 2; 20 19; Stone called for 822.00 PB 7 P781, could not find; 119.62 not find.