

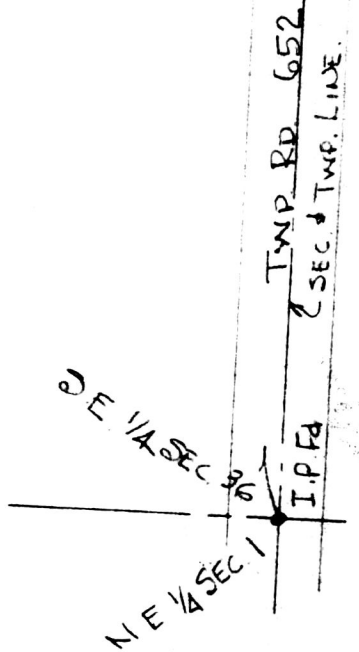
SAM L MAST

PLAT OF A SURVEY OF A PART OF THE
 S.E. 1/4 OF SEC. 36, TWP 15, RANGE 12, SALT
 CREEK TOWNSHIP, HOLMES COUNTY, OHIO TO
 CONVEY A PARCEL FROM SAM L. MAST TO ELI
 A. YODER

SCALE: 1" = 100'
 R.H. HUNSINGER, #3685, REGISTERED SURVEYOR MARCH 17, 1983

138893

Rec'd. Oct. 5, 1983 AT 9:40 O'CLOCK A.M.
 Recorded Oct. 5, 1983 Holmes Co. Ohio Fee, 5.00
 Plat Vol. 10 Pg. 196 Recorder Richard Thaven
 Deed Vol. 221 Pg. 753



MAP OFFICE COPY