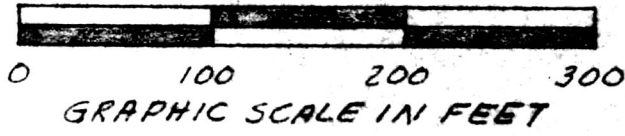
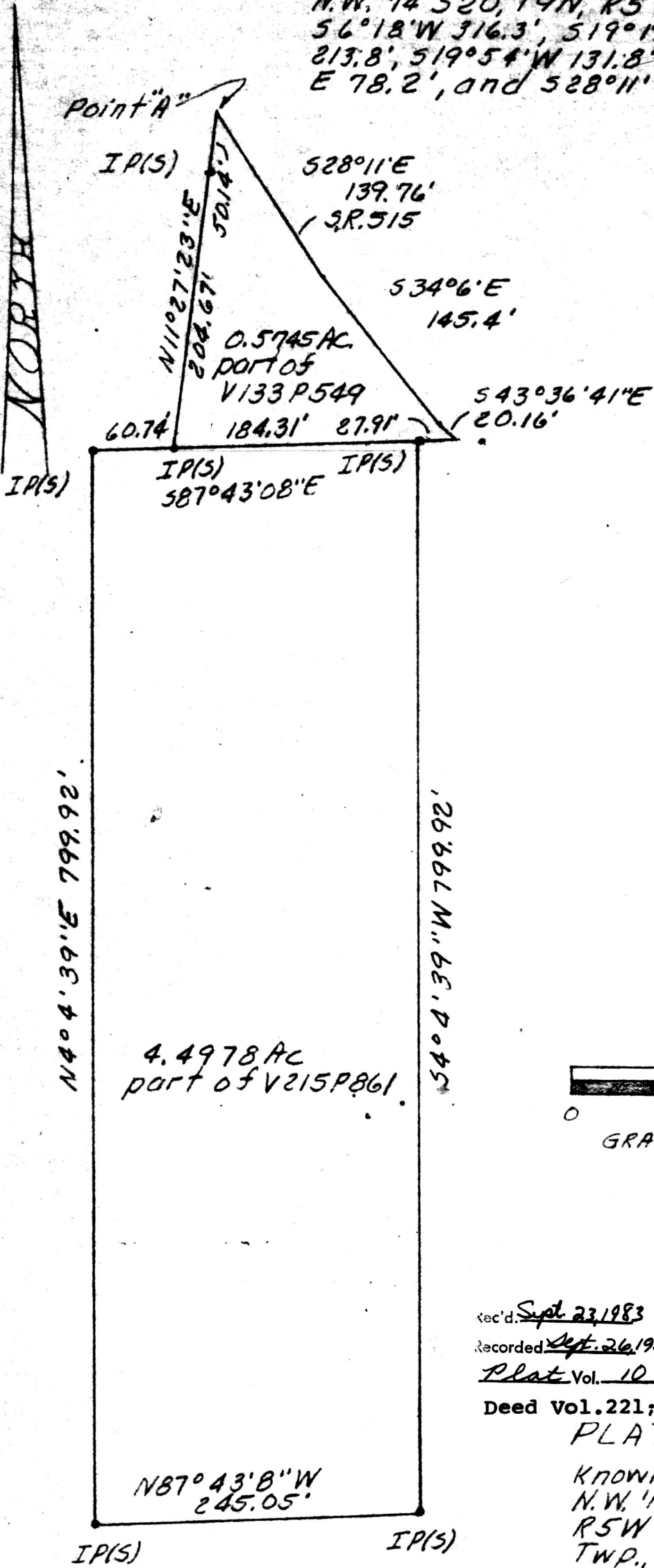


Point A is as follows from the N. E. crnr of the N.W. 1/4 S20, T9N, R5 W: N86°0'W 1636.7' 56°18'W 316.3', 519°19'W 152.8', 338°34'W 213.8', 519°54'W 131.8', 30°12'E 77.0', 517°23'E 78.2', and 528°11'29.74' (V162 P252).



138752

rec'd. Sept. 23, 1983 AT 2:27 O'CLOCK PM
 Recorded Sept. 26, 1983 Holmes Co. Ohio Fee: 5.00
 Plat Vol. 10 Pg. 190 Recorder Richard Shaver
 Deed Vol. 221; Pg. 645, 647.

PLAT OF A SURVEY

Known as part of the
 N.W. 1/4 of S20, T9N
 R5W of Walnut Creek
 Twp., Hol. Co., Ohio.

Robert L. Kasner P.S. 5193
 P.E. 28823
 9/12/83

MAP OFFICE COPY