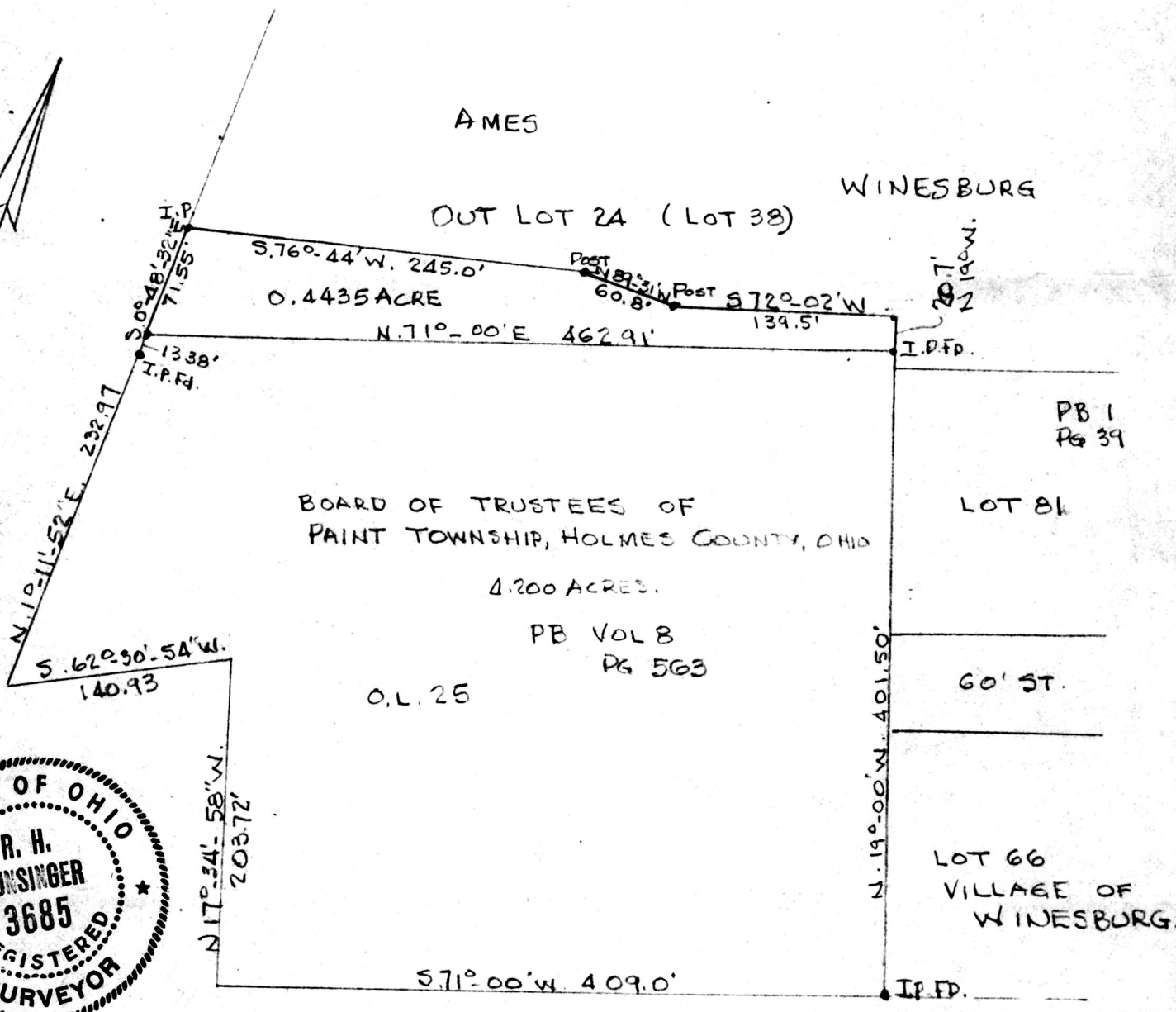


136253



PLAT OF A SURVEY OF A PART OF OUT LOT 24 (VILLAGE OF WINESBURG) PART OF LOT 38, THIRD QUARTER, TWP. 10N., RANGE 4W, PAINT TOWNSHIP, HOLMES COUNTY, OHIO, TO CONVEY A PARCEL FROM AMES TO THE BOARD OF TRUSTEES OF PAINT TOWNSHIP, HOLMES COUNTY, OHIO

SCALE - 1" = 100'

MAY 24, 1982

R. H. HUNSINGER, #3685, REGISTERED SURVEYOR

136253

Deed Vol. 219; Pg. 809.

**MAP OFFICE COPY**

rec'd. March 16, 1983 AT 10:54 O'CLOCK AM

Recorded March 16, 1983 Holmes Co. Ohio Fee: 2.00

Plat Vol. 10 Pg. 108 Recorder Richard Shaven

*Steve Krosky*