

133218

133218

Rec'd. Aug 27, 1982 AT 11:11 O'CLOCK A.M.

Recording Aug 27, 1982 Holmes Co. Ohio Fee: 2.00

Plot Vol. 10 Pg. 43 Recorder Richard J. McDaid

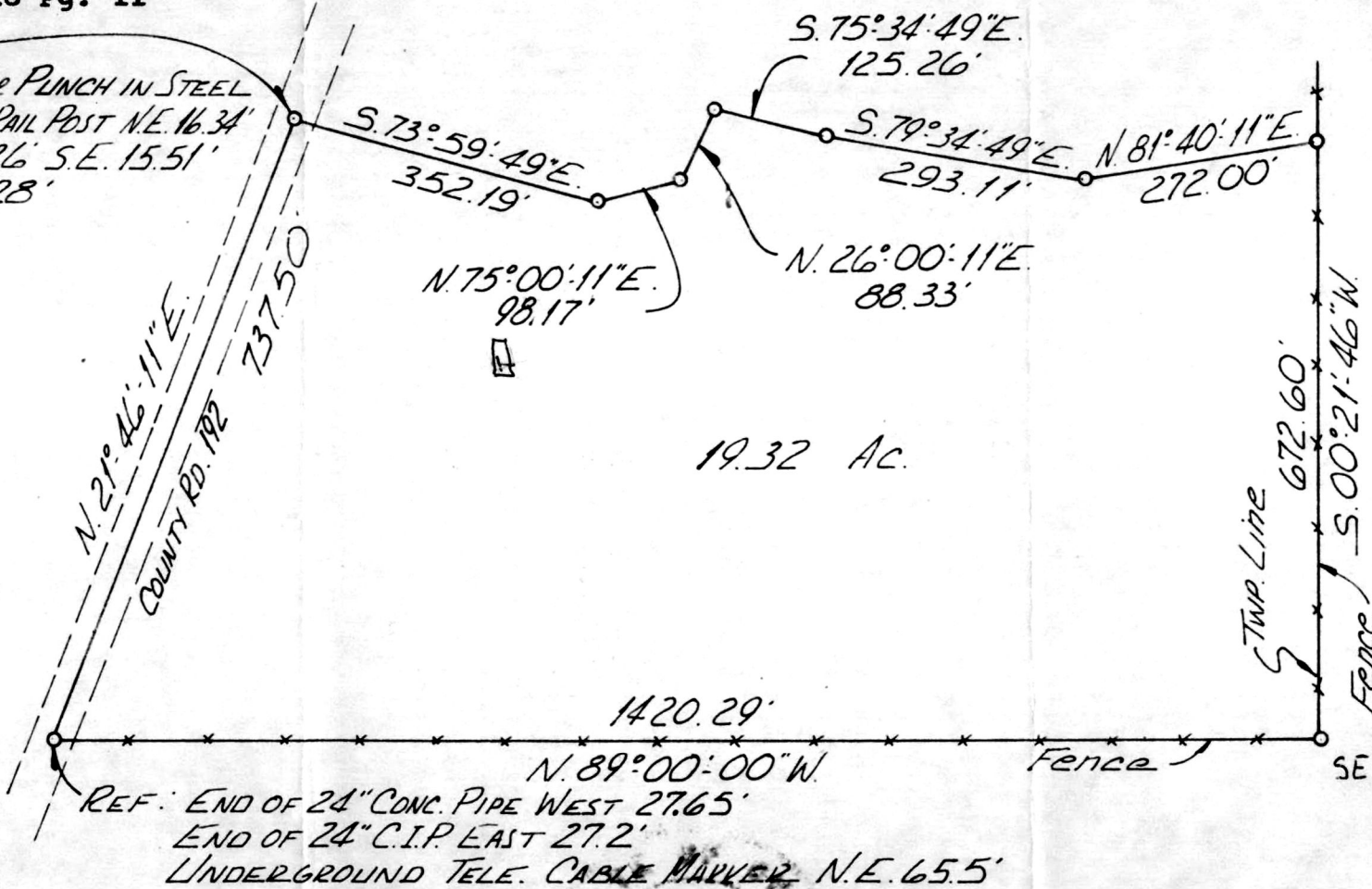
Deed Vol. 218 Pg. 11

HOUSE

PRAIRIE TOWNSHIP
SECTION 36 TWP. 14-N
RANGE-13-W N.E. QTR.
HOLMES COUNTY, OHIO

MADE FOR: ED TROYER

REF: CENTER PUNCH IN STEEL
GLIARD RAIL POST N.E. 16.34'
N.W. 17.26' S.E. 15.51'
S.W. 17.28'



SCALE 1"=200'
o = IRON PIN SET

MAP OFFICE COPY

REF: END OF 24" CONC. PIPE WEST 27.65'
END OF 24" C.I.P. EAST 27.2'
UNDERGROUND TELE. CABLE MARKER N.E. 65.5'

SW-1617
SHAFFER, JOHNSTON, LICHTENWALTER
& ASSOCIATES
WOOSTER OHIO



I CERTIFY THIS SURVEY AND PLAT TO BE
CORRECT TO THE BEST OF MY KNOWLEDGE
JUNE 24, 1974

Richard J. McDaid
RICHARD J. McDAID P.S. #5009