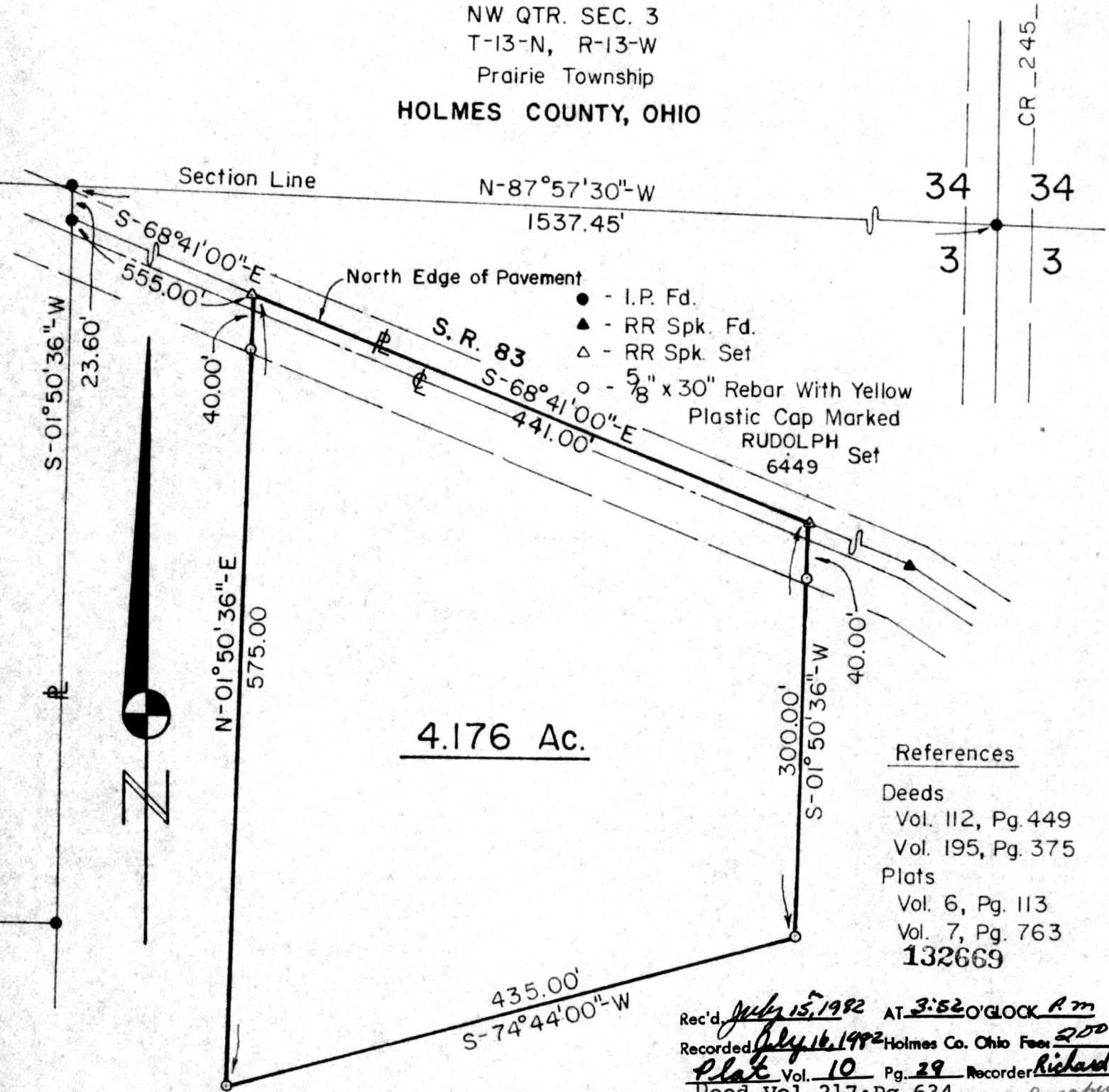


SURVEY of a 4.176 ACRE PARCEL

NW QTR. SEC. 3
 T-13-N, R-13-W
 Prairie Township
HOLMES COUNTY, OHIO



References

Deeds
 Vol. 112, Pg. 449
 Vol. 195, Pg. 375
 Plats
 Vol. 6, Pg. 113
 Vol. 7, Pg. 763
132669

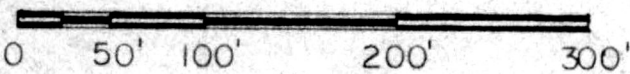
Rec'd July 15, 1982 AT 3:52 O'CLOCK P.M.
 Recorded July 16, 1982 Holmes Co. Ohio Fees 2.00
Plat Vol. 10 Pg. 29 Recorder Richard J. ...
 Deed Vol. 217 Pg. 634

I Certify This Survey And Plat To Be *Donative Realty*
 Correct To The Best Of My Knowledge. *pick up*

6-8-82 Ronald G. Rudolph
 Date Ronald G Rudolph - R.S. 6449

R.G. RUDOLPH SURVEYING, Inc.
 1175 Summerset Dr.
 Wooster, Ohio 44691

Scale: 1" = 100'



Job No. 788

MAP OFFICE COPY