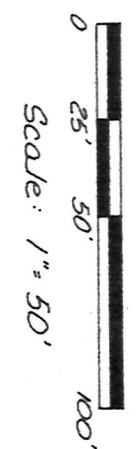
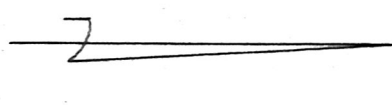
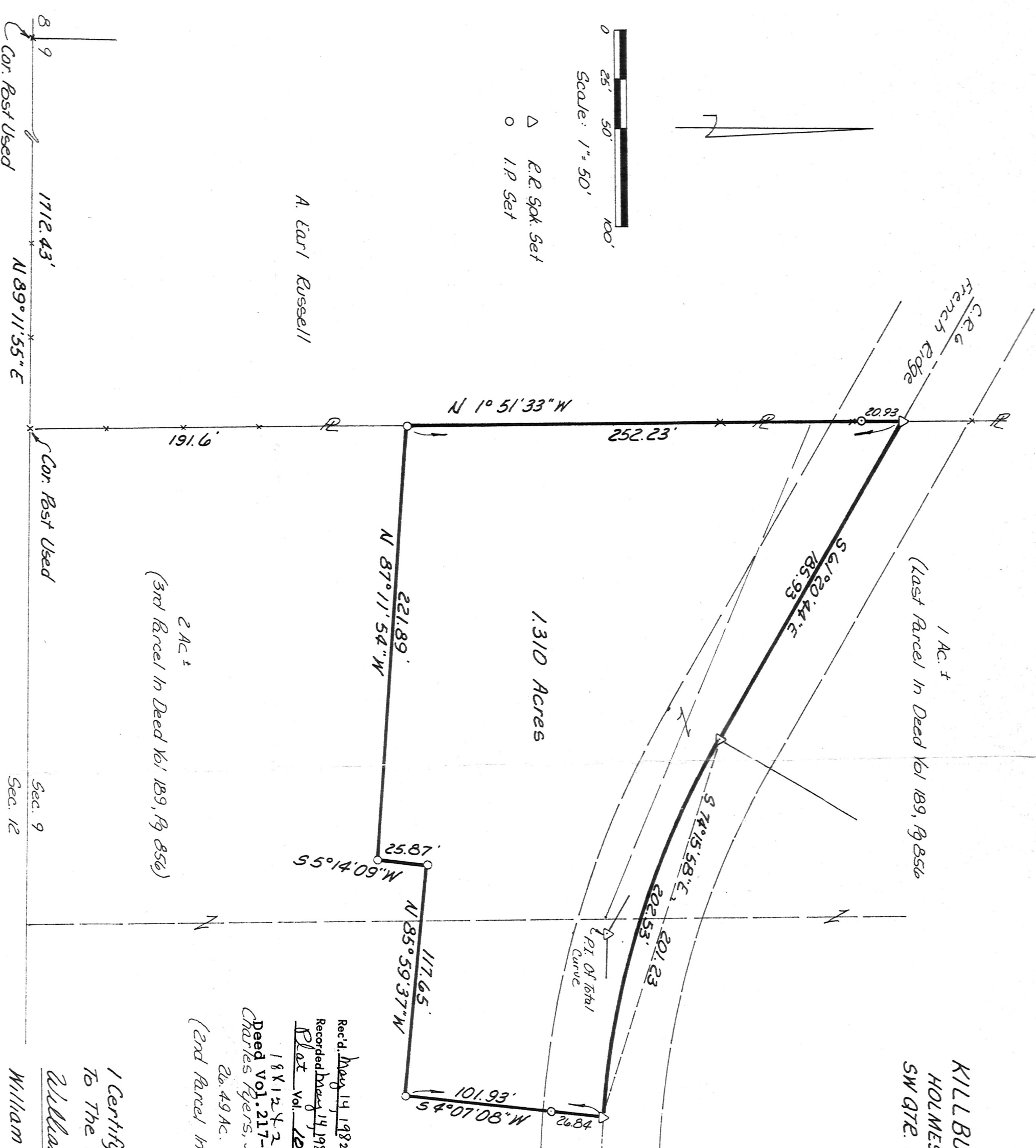


KILLBUCK TOWNSHIP
 HOLMES COUNTY, OHIO
 SW QTR. SECTION 9, T-8N, R-8W



- △ R.P. Spt. Set
- I.P. Set

A. Earl Russell



1.310 Acres

2 Ac.[±]
 (3rd Parcel in Deed Vol 189, Pg 856)

1 Ac. ±
 (Last Parcel in Deed Vol 189, Pg 856)

Curve Data for
 Total Curve:
 Δ = 28° 40' 00"
 R = 450.00'
 T = 114.98
 L = 225.15

Curve Data for Part
 of Curve in Survey
 Δ = 25° 30' 25"
 R = 450.00
 L = 202.53
 Chord = 201.23
 Chord Bng = S 74° 15' 58" E

Rec'd. May 14, 1982 AT 11:30 O'CLOCK A.M.
 Recorded May 14, 1982 - Holmes Co. Ohio Fee: 4.32
 Plat Vol. 12 Pg. 9 Recorder: Richard
 18 X 12 X 2
 Deed Vol. 217-Pg. 14
 Charles Myers, Jr. & Patricia S. Myers
 26.49 Ac.
 (2nd Parcel in Deed Vol 189, Pg 856)

I Certify This Survey To Be Correct
 To The Best Of My Knowledge
 William H Long Feb. 17, 1982
 William H. Long P.S. 6505

MAP OFFICE COPY

8
 9
 Cor. Post Used
 SW Cor Sec. 9

1712.43'
 N 89° 11' 55" E

Cor. Post Used

Sec. 9
 Sec. 12

131858