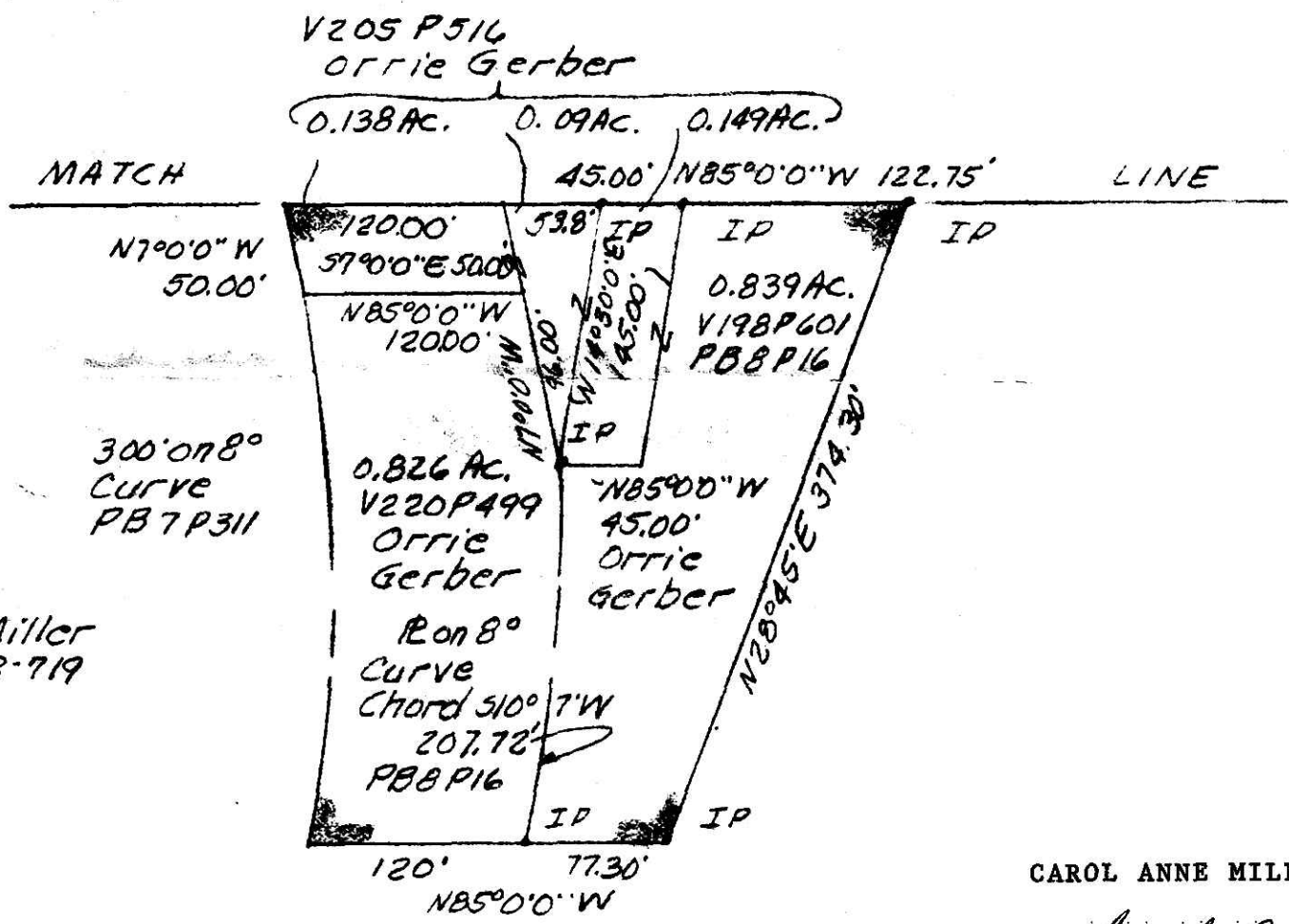
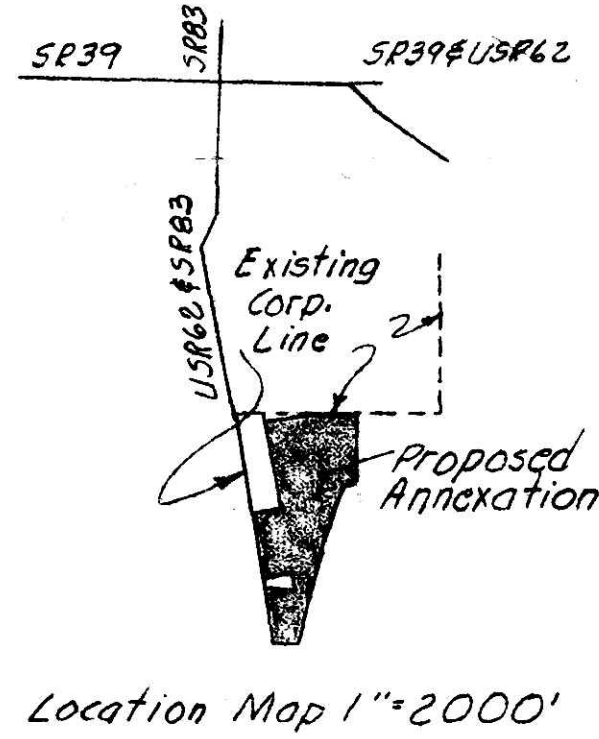


Areaage Table

Orrie Gerber	V205 P 516	0.138 Ac.
...	V205 P 516	.09
...	V205 P 516	.149
...	V198 P 601	.839
...	V220 P 499	.826
Health Care & Retirement Corp.	V221 P 259	5.0000 Ac.
D. & J. Enterprises Inc.	V213 P 344	.6320
...	V213 P 340	2.611
W.H. Patton Drilling Co.	V169 P 318	.31
...	V169 P 318	.135
...	V169 P 318	.33
Carol Anne Miller	V201 P 708-719	16.9320
Total in Proposed Annexation		27.9920 Ac.

James L. Schafer  
Richard L. Fowler



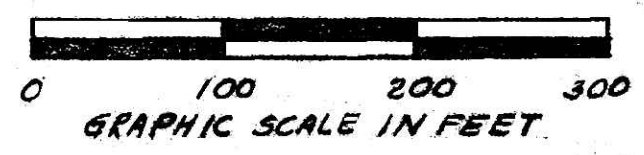
CAROL ANNE MILLER, ET AL  
By: Carol Anne Miller  
Carol Anne Miller, Agent for Petitioners

HOLMES COUNTY COMMISSIONERS  
I hereby certify that the Holmes County Commissioners have approved the Detachment of these tracts of land as shown hereon from Holmes County. 4/11/84  
Jack E. Nowels  
Chairman, County Commissioners.

HOLMES COUNTY PLANNING COMMISSION  
I the undersigned, being president of the Holmes County Planning Commission, do hereby certify approval as the attached plat for Annexation to the Village of Millersburg.  
4/11/84  
Richard L. Sawyer  
President, Hol. County Planning Commission.

MILLERSBURG VILLAGE COUNCIL  
I hereby certify that this plat for Annexation was approved by the Village Council of Millersburg, Ohio at a regular meeting held on the date hereon listed.  
4/13/84  
William J. ...  
Village Clerk.

142533 RECORDER  
I hereby certify that this plat was received for record on the date of May 1, 1984 at 3:46 PM and was recorded in Plat Book 9 Page 224  
Richard L. Sawyer  
Recorder.



**PROPOSED ANNEXATION TO THE VILLAGE OF MILLERSBURG**

Known as part of the S.E. 1/4 of S 19, T 9 N, R 7 W of Hardy Twp, Hol. Co., Ohio.

Robert L. Kasner, P.S. 5193  
P.E. 28820  
Robert L. Kasner 4/7/83 Revised 10/5/83