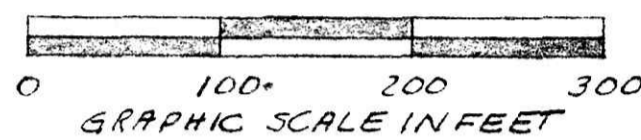
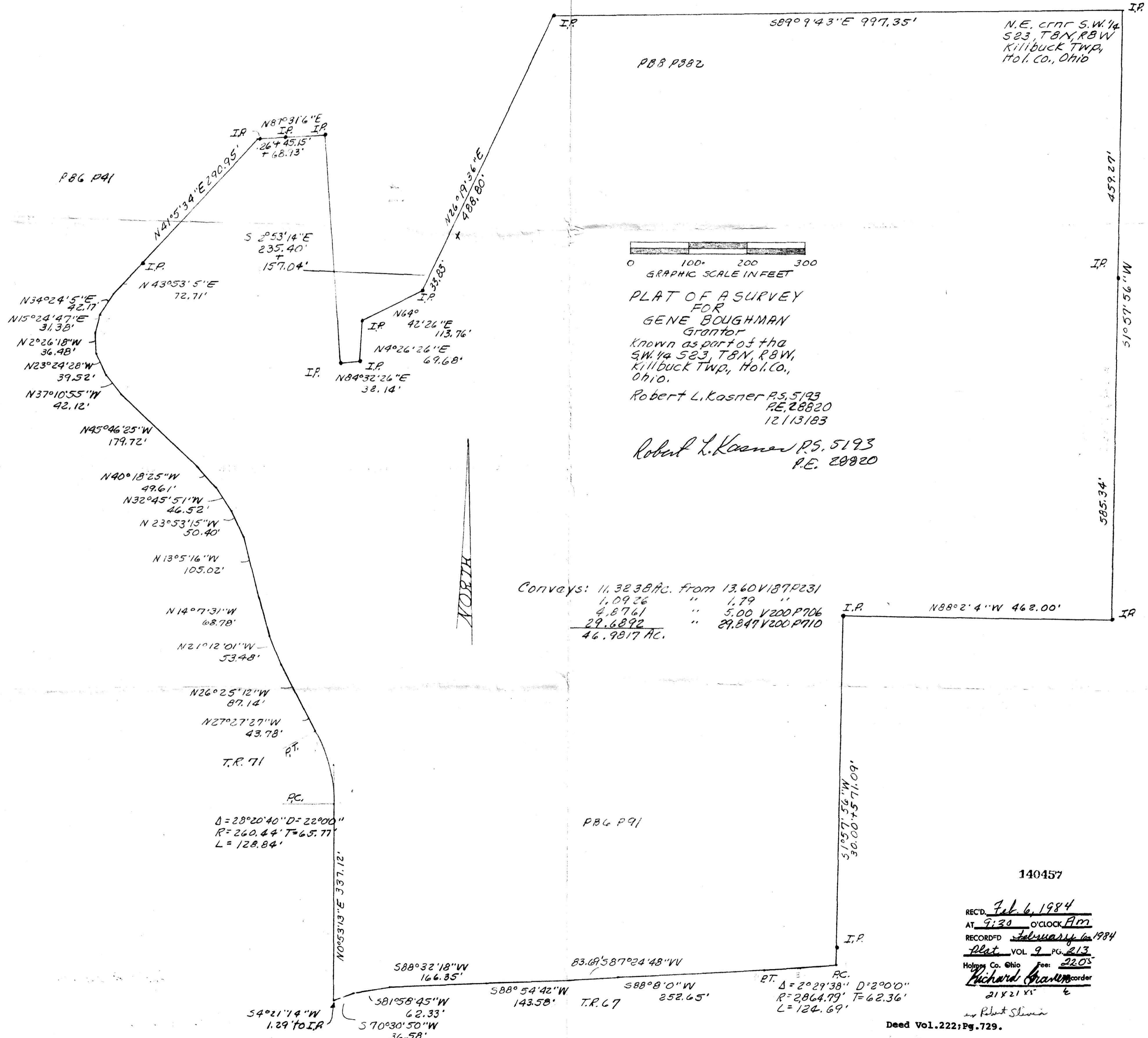


140457



PLAT OF A SURVEY
FOR
GENE BOUGHMAN
Grantor
Known as part of the
S.W. 1/4 S23, T8N, R8W,
Killbuck Twp., Hol. Co.,
Ohio.
Robert L. Kasner P.S. 5193
P.E. 28820
12/13/83

Robert L. Kasner P.S. 5193
P.E. 28820

Conveys: 11.3238 AC. from 13.60 V187 P231
1.0926 " 1.79 "
4.8761 " 5.00 V200 P706
29.6892 " 29.849 V200 P710
46.9817 AC.

$\Delta = 28^{\circ} 20' 40''$ $D = 22900''$
 $R = 260.44'$ $T = 65.77'$
 $L = 128.84'$

RT. RC.
 $\Delta = 2^{\circ} 29' 38''$ $D = 2^{\circ} 0' 0''$
 $R = 2864.79'$ $T = 62.36'$
 $L = 124.69'$

140457

REC'D. Feb 6, 1984
AT 9:30 O'CLOCK AM
RECORDED February 16, 1984
Plat VOL 9 PG. 213
Holmes Co. Ohio Fee: 2.20
Richard Graner Recorder
21 X 21 X 1/2

Deed Vol. 222; Pg. 729.

MAP OFFICE COPY