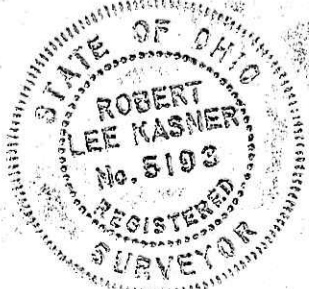
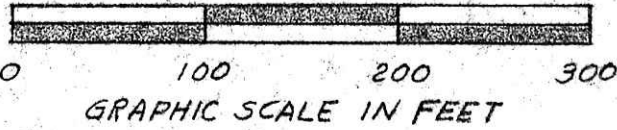
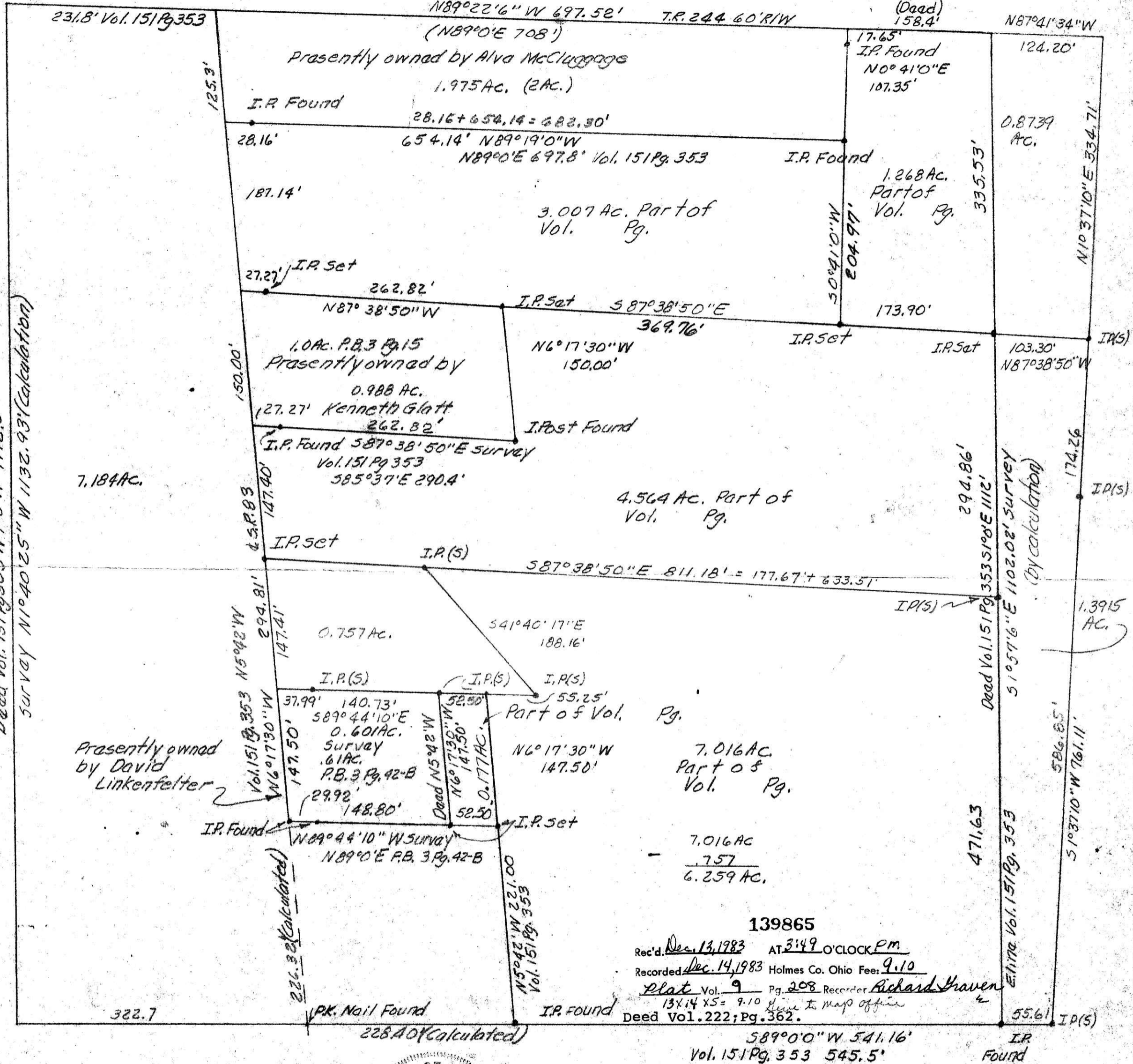


N.W. cor' Frac. S14
T13N R13W Vol. 151 Pg. 353

139865
Hol. Co. Infirmiry

Vol. 151 Pg. 353



139865
 Rec'd. Dec. 13, 1983 AT 3:49 O'CLOCK PM
 Recorded Dec. 14, 1983 Holmes Co. Ohio Fee: 9.10
 Plat Vol. 9 Pg. 208 Recorder Richard Graven
 13x14 X5 = 9.10 Give to Map Office
 Deed Vol. 222; Pg. 362.

PLAT OF A RESURVEY OF
 VOL. 151 PG. 353
 Known as part of Frac' 1 S14, T13N,
 R13W of Prairie Twp, Hol. Co., Ohio
 Robert L. Kasner P.S. 5193 P.E. 28820

MAP OFFICE COPY