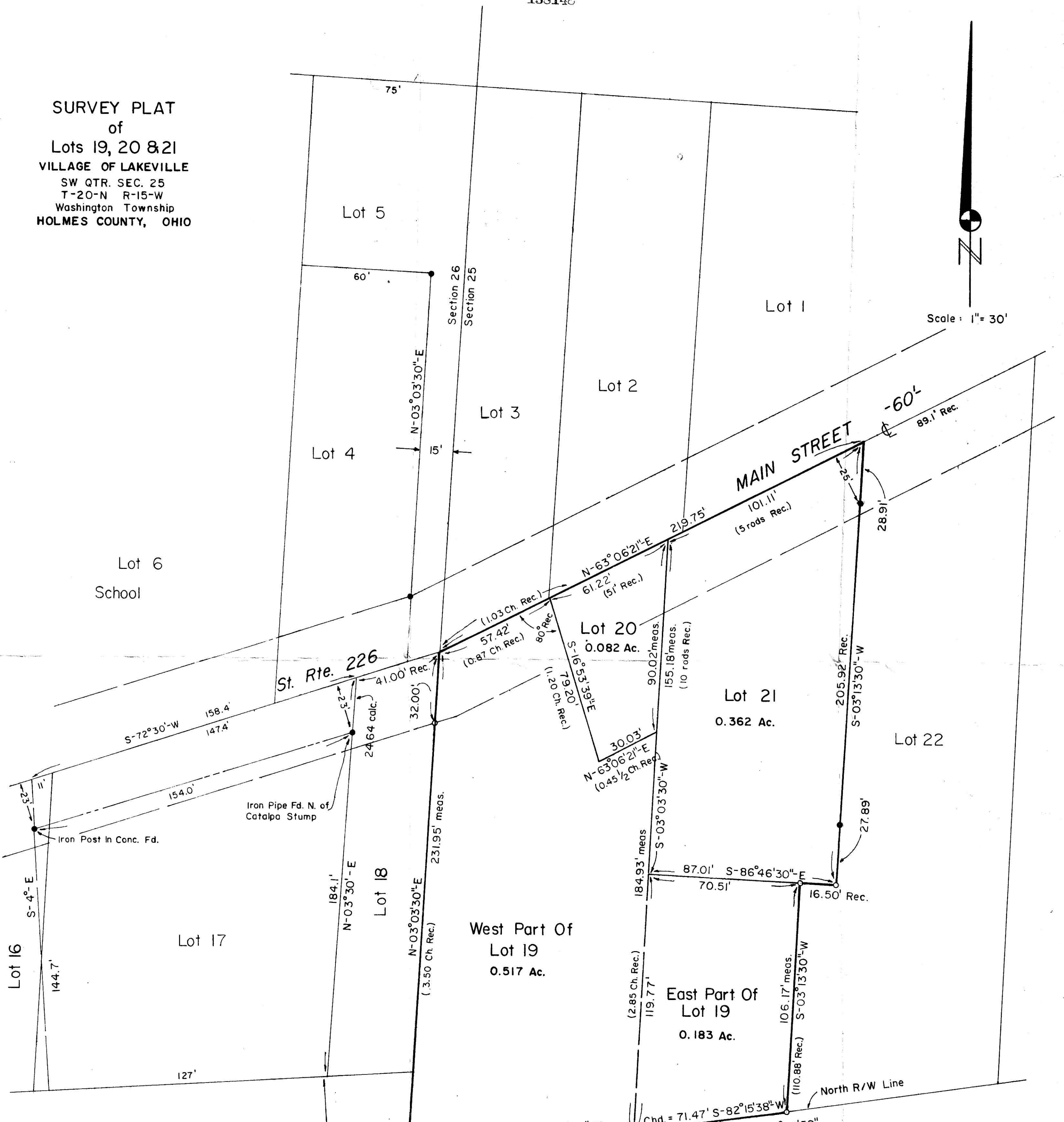
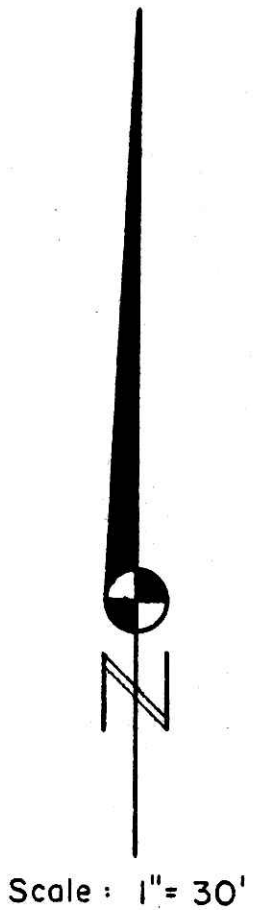
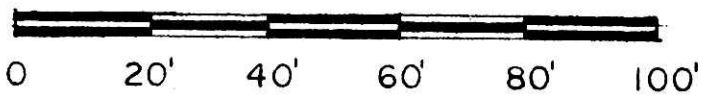
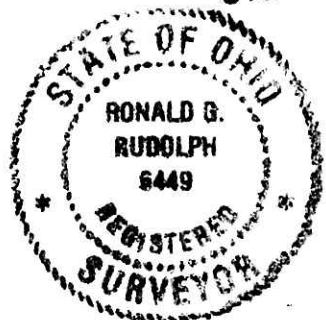


**SURVEY PLAT**  
of  
**Lots 19, 20 & 21**  
**VILLAGE OF LAKEVILLE**  
SW QTR. SEC. 25  
T-20-N R-15-W  
Washington Township  
**HOLMES COUNTY, OHIO**



I Certify This Survey And Plat To Be Correct To The Best Of My Knowledge.

7-25-83 *Ronald G. Rudolph*  
Date Ronald G. Rudolph - Reg. Surv. 6449  
R. G. RUDOLPH SURVEYING, Inc.  
405 W. Liberty St.  
Wooster, Ohio 44691  
Job No. 1099



- References**
- Deeds: Vol. 45, Pg. 156
  - Vol. 62, Pg. 225
  - Vol. 97, Pg. 190
  - Vol. 187, Pg. 28
  - Vol. 206, Pg. 524
- The Old Lakeville Map  
RR R/W Plan

Rec'd August 12, 1983 at 8:47 A.M.  
Recorded August 12, 1983 Holmes Co. Ohio Fee: 18.70  
Plat Vol. 9 Pg. 190 Recorder *Richard Owen*  
22 x 17 x .05

Surveyed For John and Leila Grisetti - Grantors  
Deed Vol. 206, Pg. 524

- - Iron Corners Fd.
- - 5/8" x 30" Rebar With Yellow Plastic Cap. Marked RUDOLPH Set 6449

**MAP OFFICE COPY**