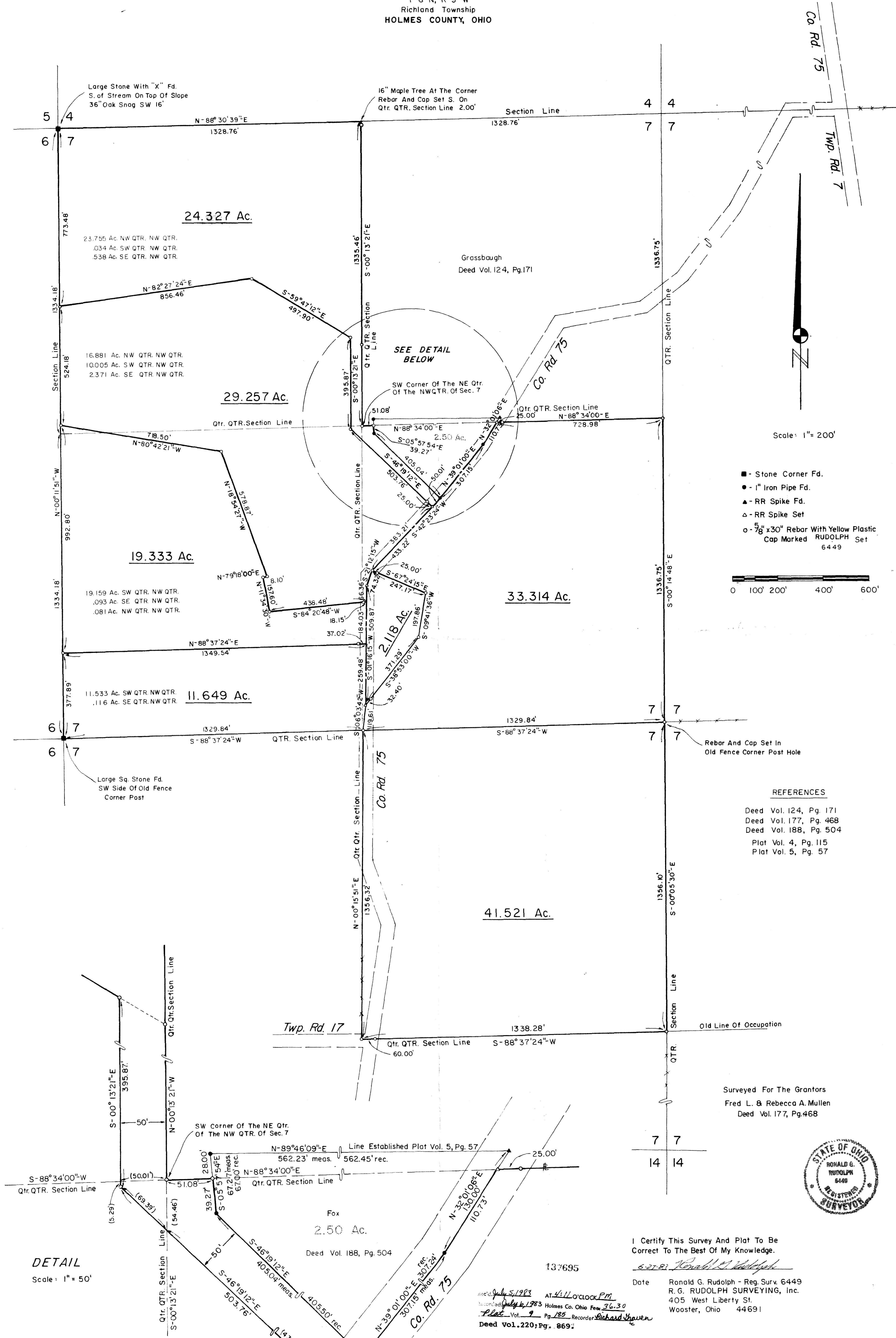


SURVEY PLAT
NW & SW QUARTERS of SECTION 7
T-8-N, R-9-W
Richland Township
HOLMES COUNTY, OHIO



Scale: 1" = 200'

- - Stone Corner Fd.
- - 1" Iron Pipe Fd.
- ▲ - RR Spike Fd.
- △ - RR Spike Set
- - 5/8" x 30" Rebar With Yellow Plastic Cap Marked RUDOLPH Set 6449

0 100' 200' 400' 600'

REFERENCES

- Deed Vol. 124, Pg. 171
- Deed Vol. 177, Pg. 468
- Deed Vol. 188, Pg. 504
- Plat Vol. 4, Pg. 115
- Plat Vol. 5, Pg. 57

Surveyed For The Grantors
Fred L. & Rebecca A. Mullen
Deed Vol. 177, Pg. 468



I Certify This Survey And Plat To Be Correct To The Best Of My Knowledge.

Date: 6-27-83
Ronald G. Rudolph
Ronald G. Rudolph - Reg. Surv. 6449
R. G. RUDOLPH SURVEYING, Inc.
405 West Liberty St.
Wooster, Ohio 44691

rec'd July 5, 1983 AT 4:10 O'CLOCK P.M.
Recorded July 6, 1983 Holmes Co. Ohio Fee 36.30
Plat Vol. 9 Pg. 185 Recorder Richard Thayer
Deed Vol. 220; Pg. 869

MAP OFFICE COPY

DETAIL

Scale: 1" = 50'

