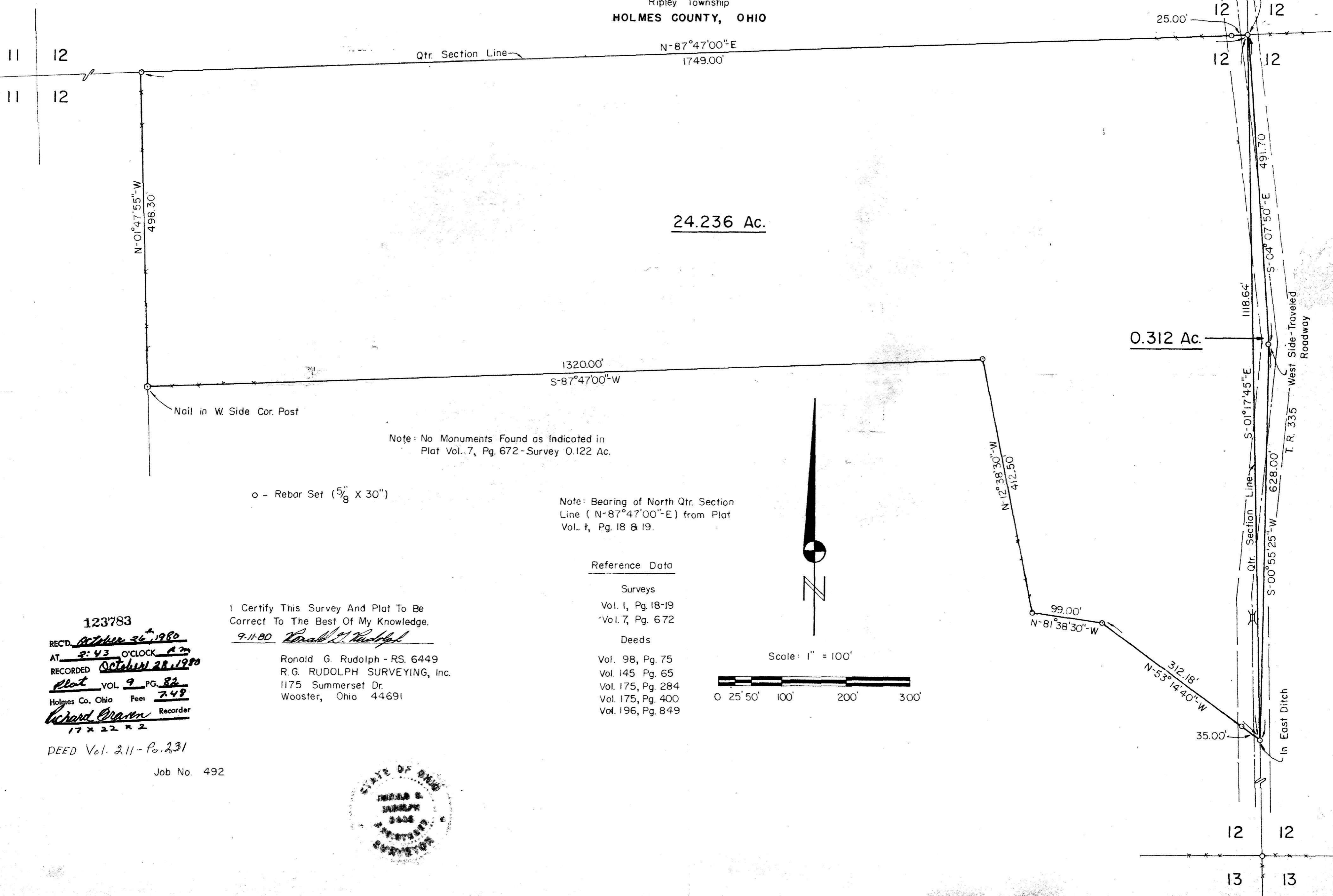


**SURVEY of 24.548 ACRE PARCEL**

24.236 Ac. in SW QTR. SEC. 12  
 0.312 Ac. in SE QTR. SEC. 12  
 T-17-N, R-14-W  
 Ripley Township  
**HOLMES COUNTY, OHIO**



24.236 Ac.

0.312 Ac.

Note: No Monuments Found as Indicated in  
 Plat Vol. 7, Pg. 672 - Survey 0.122 Ac.

o - Rebar Set ( $\frac{5}{8}$ " X 30")

Note: Bearing of North Qtr. Section  
 Line (N-87°47'00"-E) from Plat  
 Vol. 1, Pg. 18 & 19.

Reference Data

Surveys

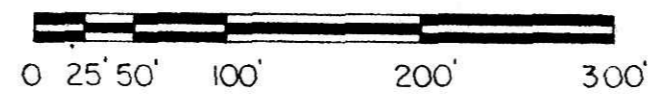
Vol. 1, Pg. 18-19  
 Vol. 7, Pg. 672

Deeds

Vol. 98, Pg. 75  
 Vol. 145, Pg. 65  
 Vol. 175, Pg. 284  
 Vol. 175, Pg. 400  
 Vol. 196, Pg. 849



Scale: 1" = 100'



I Certify This Survey And Plat To Be  
 Correct To The Best Of My Knowledge.

9-11-80 *Ronald G. Rudolph*

Ronald G. Rudolph - RS. 6449  
 R.G. RUDOLPH SURVEYING, Inc.  
 1175 Summerset Dr.  
 Wooster, Ohio 44691

123783  
 REC'D. *October 26, 1980*  
 AT *2:43* O'CLOCK *PM*  
 RECORDED *October 28, 1980*  
 Plat VOL *9* PG. *82*  
 Holmes Co. Ohio Fees *7.48*  
*Richard Oraven* Recorder  
*17 x 22 x 2*

DEED Vol. 211 - Pg. 231

Job No. 492

