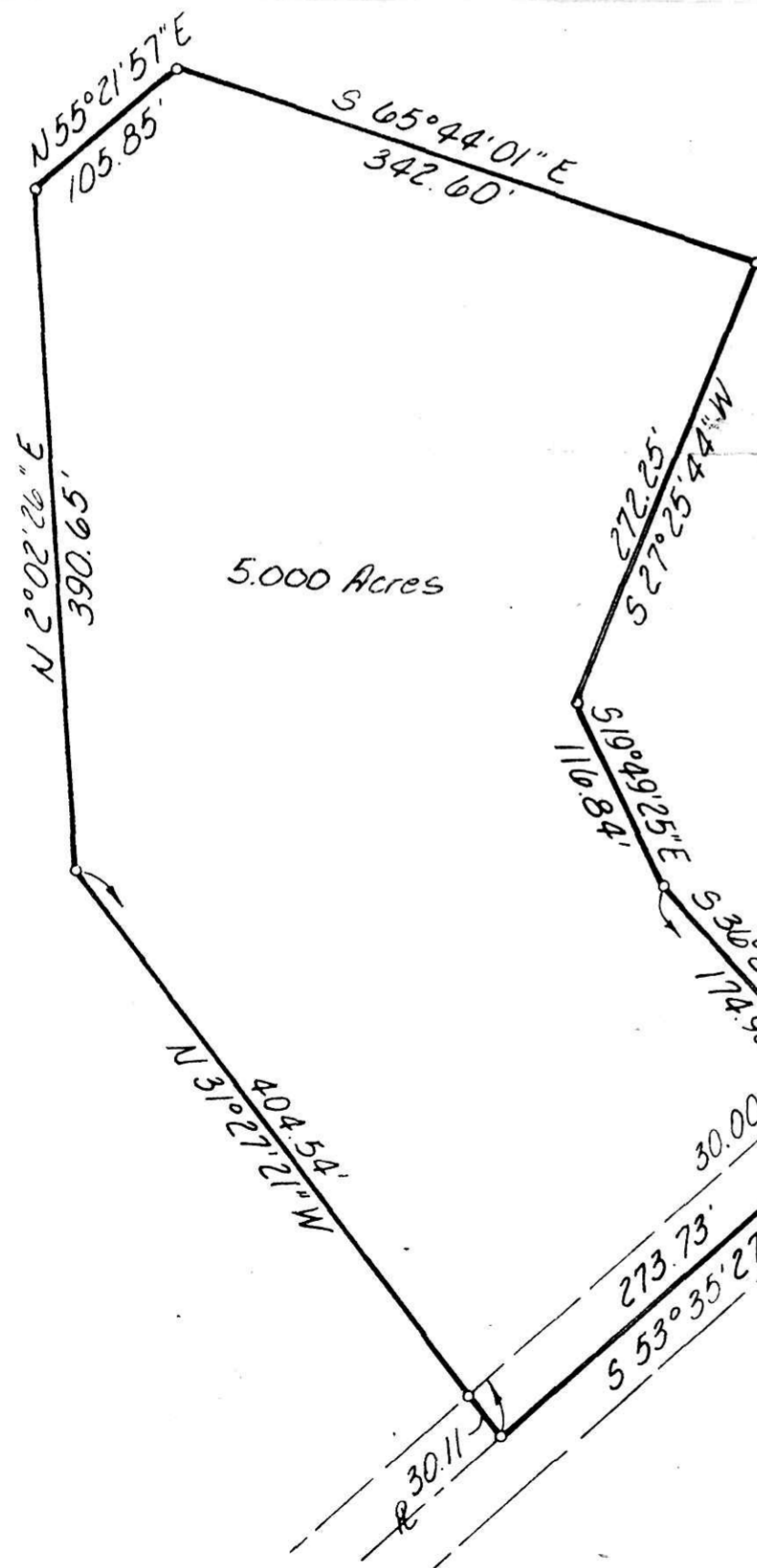
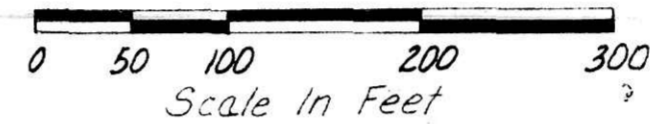


WALNUT CREEK TOWNSHIP
 HOLMES COUNTY, OHIO
 Part Of Lot 2, 1st Quarter, T-9-N, R-5-W

NE Cor Lot 2,
 1st Qtr T-9-N, R-5-W



A. Kue & Faun L. Brand
 Vol 167, Pg 465



- I.P. Found
- I.P. Set

Bearings On This Plat Are For The Purpose
 Of Indicating Angles.

I Certify This Plat To Be Correct To The
 Best Of My Knowledge
 William H. Long
 William H. Long R.S. 6505 August 26, 1980

123041

RECD September 10, 1980
 RE 3:02 O'CLOCK PM
 RECORDED September 11, 1980
 HOLMES CO. Plat VOL. 9, PG. 28
 FEE: \$ 4.94
 Richard Craven RECORDER
 13x 14x2

Deed Vol. 210-Pg. 548