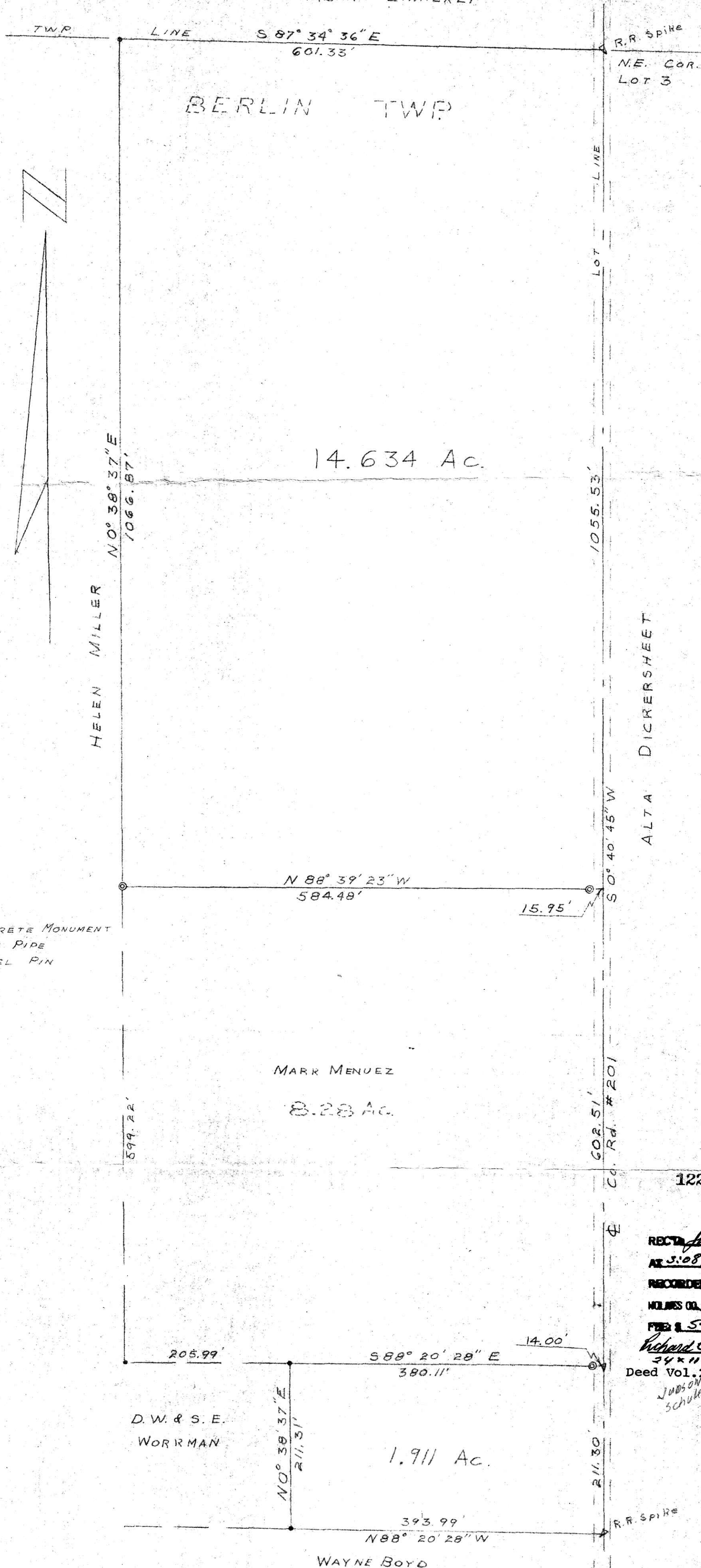


SALT CREEK TWP  
DAVID & BARBARA ZIMMERLY



⊙ = CONCRETE MONUMENT  
 ○ = IRON PIPE  
 ● = STEEL PIN

RECT. June 10<sup>th</sup>, 1980  
 AT 3:08 O'CLOCK A.M.  
 RECORDED June 11<sup>th</sup>, 1980  
 HOLMES CO. VOL. 9 PG. 67  
 FEB 15 53  
 Richard Clark RECORDED  
 34 x 11 1/2 x 2  
 Deed Vol. 209-Pg. 657  
 JUDSON SCHULZ

Plat of a Tract of Land  
 in  
 Lot 3, First Quarter  
 Range 6W, Township 9N  
 Berlin Township  
 Holmes County  
 Ohio  
 Scale: 1"=100'  
 March 10, 1980

MAP OFFICE COPY

G. A. Stewart #414