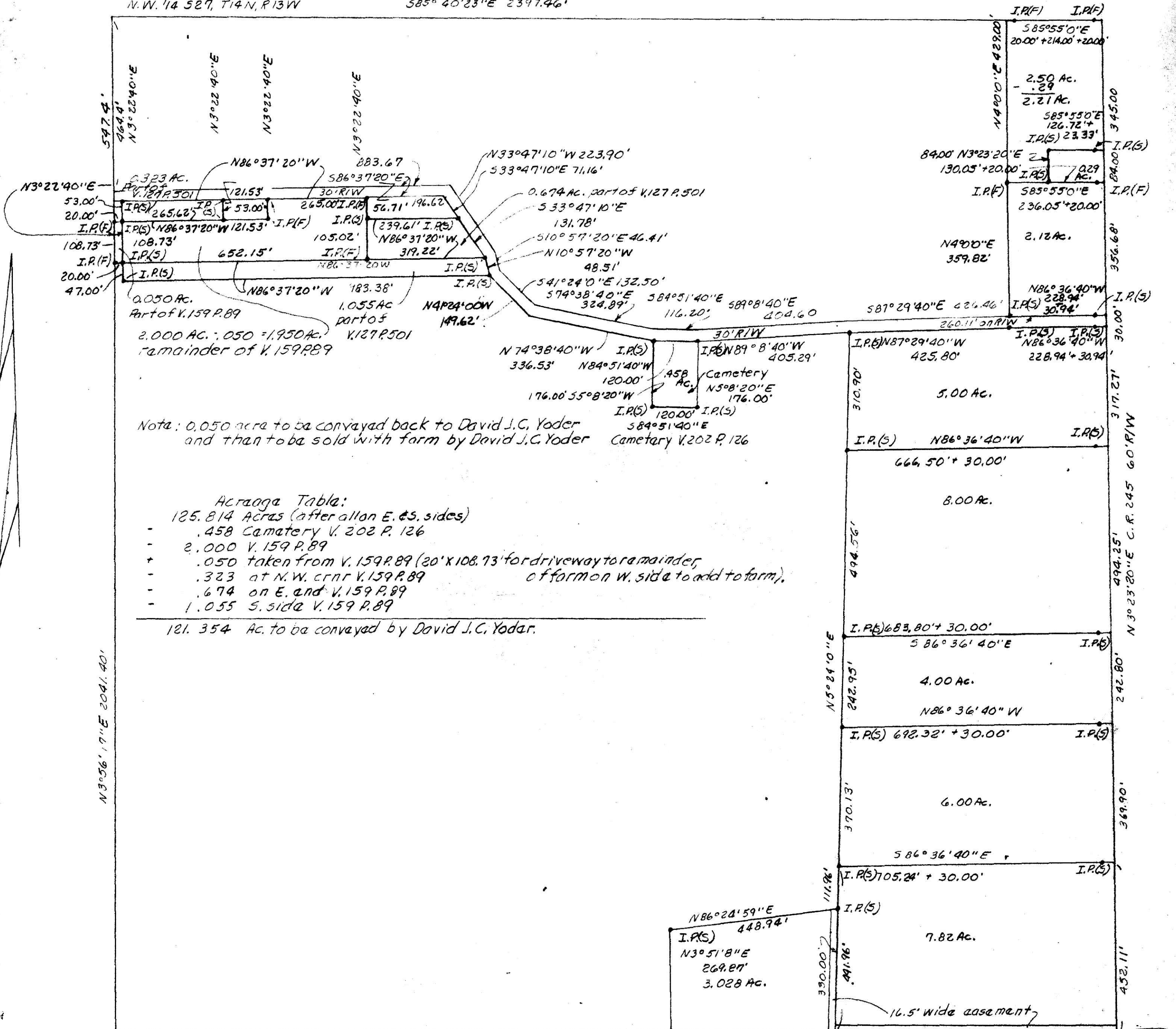


Post at N.W. CRN
N.W. 1/4 527, T14N, R13W

585° 40' 23" E 2397.46'



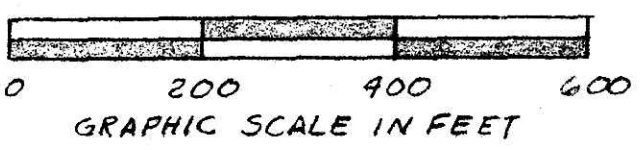
Note: 0.050 acre to be conveyed back to David J.C. Yoder and then to be sold with farm by David J.C. Yoder

Acreage Table:

- 125.814 Acres (after all on E. & S. sides)
- .458 Cemetery V. 202 P. 126
- 2.000 V. 159 P. 89
- + .050 taken from V. 159 P. 89 (20' x 108.73' for driveway to remainder of farm on W. side to add to farm).
- .323 at N.W. CRN V. 159 P. 89
- .674 on E. and V. 159 P. 89
- 1.055 S. side V. 159 P. 89

121.354 Ac. to be conveyed by David J.C. Yoder.

Post at S.W. CRN 1481.01'
NW 1/4 527, T14N
R13W



117714

REC'D: May 11, 1979
AT 11:10 O'CLOCK A.M.
RECORDED: May 11, 1979
HOLMES CO. Plat VOL. 9 PG. 32
FEE: \$6.⁰⁰
Richard A. ... RECORDER
18 x 17 x 2



PLAT OF A SURVEY FOR
DAVID J.C. YODER
Grantor
Known as part of N.W. 1/4 527,
T14N, R13W, of Prairie Twp,
Hol. Co., Ohio.
Robert L. Kasner, P. 55193
P.E. 28820