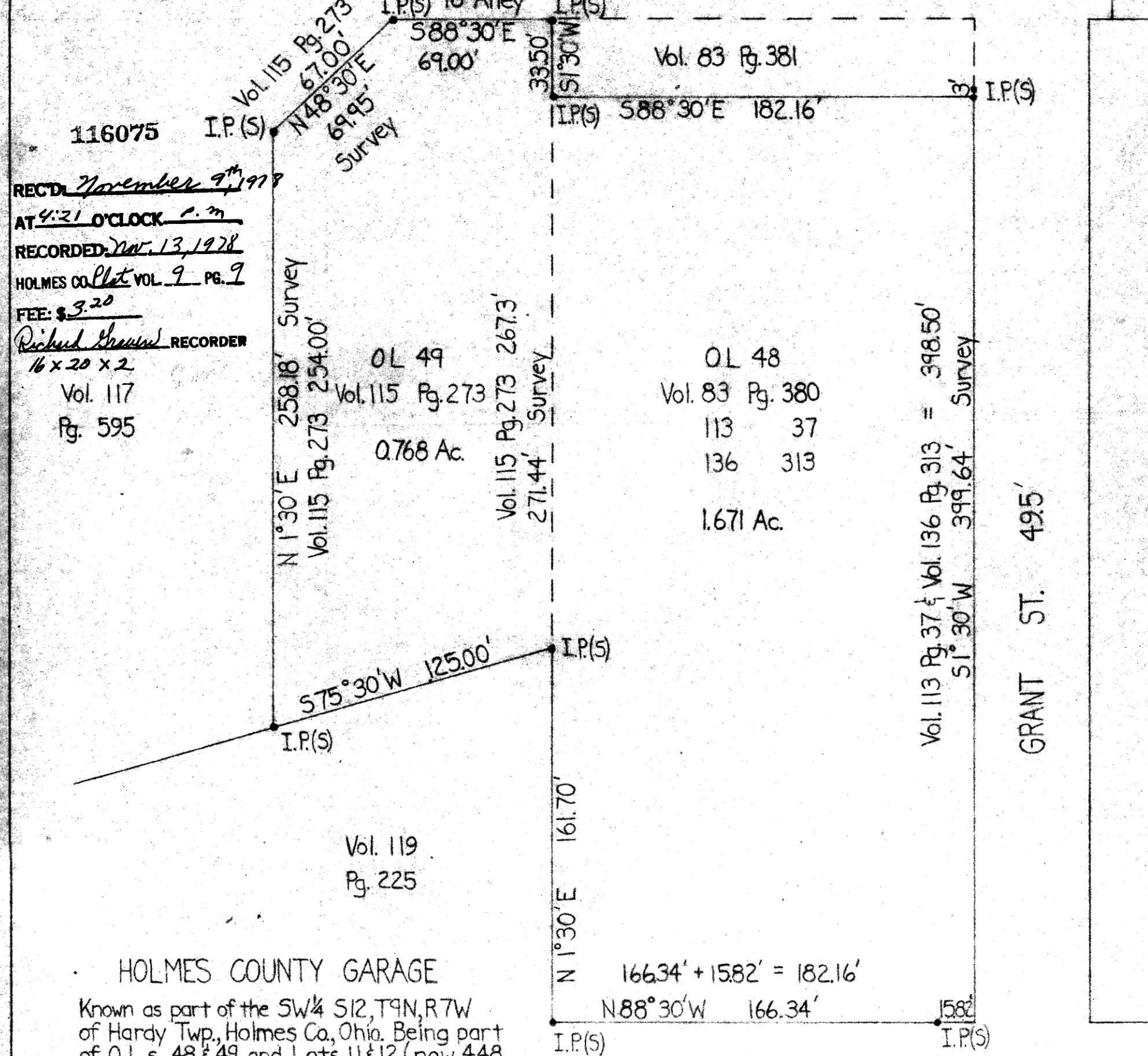
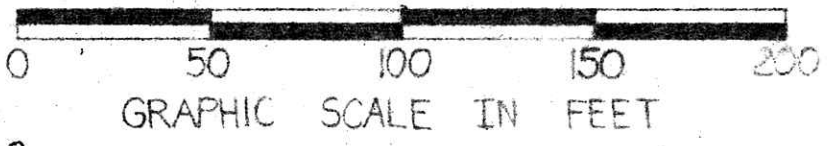


REC'D November 9th 1978
 AT 4:21 O'CLOCK P.M.
 RECORDED Nov. 13, 1978
 HOLMES CO. Plat VOL. 9 PG. 9
 FEE: \$3.20
 Richard Krasner RECORDER
 16 x 20 x 2
 Vol. 117
 Pg. 595



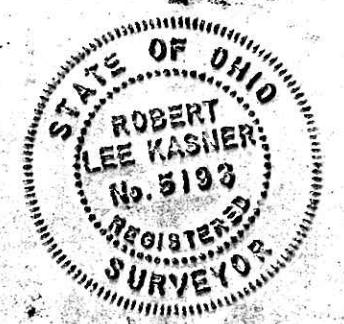
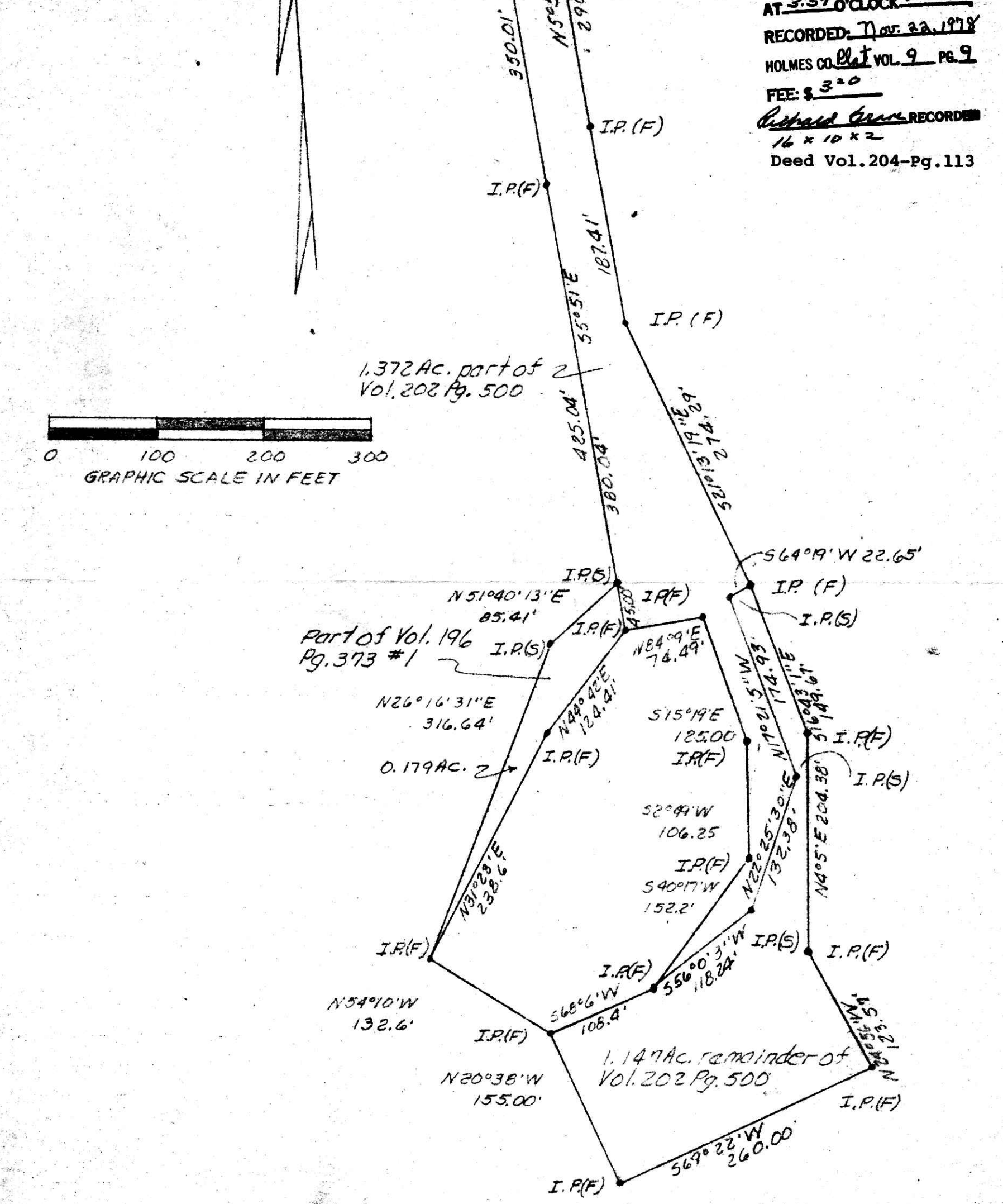
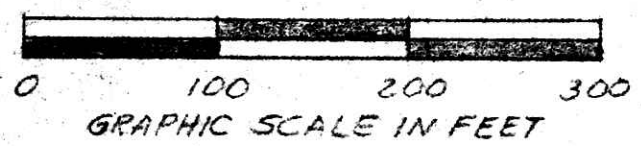
HOLMES COUNTY GARAGE
 Known as part of the SW 1/4 S12, T9N, R7W
 of Hardy Twp., Holmes Co., Ohio. Being part
 of O.L.s 48 & 49 and Lots 11 & 12 (now 448
 & 449) of Wm. Walkup's Addition to Millers-
 burg as per P.B.1 Pg. 94.
 Reference: Vol. 83 Pg. 381, Vol. 113 Pg. 37,
 Vol. 136 Pg. 313, Vol. 115 Pg. 273, & Vol. 118
 Pg. 85.
 Survey by Robert L. Kasner, P.S. 5193 & P.E. 28820

255	256	257	258
-----	-----	-----	-----



Robert L. Kasner
 P.S. 5193 P.E. 28820

T.R. 199 585°44'E 50.79' I.P.(F)
 I.P. of NW 1/4 CORN
 514, T9N, R6W
 989.20'
 129.35'
 51.50'
 89.73'
 1199.78' I.P. I.P.
 116182
 REC'D November 21st 1978
 AT 3:59 O'CLOCK P.M.
 RECORDED Nov. 23, 1978
 HOLMES CO. Plat VOL. 9 PG. 9
 FEE: \$3.20
 Richard Krasner RECORDER
 16 x 20 x 2
 Deed Vol. 204-Pg. 113



PLAT OF A SURVEY FOR
 BEN PABER (Grantor)
 Known as part of S14, T9N, R6W
 of Hardy Twp., Hol. Co., Ohio.
 Robert L. Kasner P.S. 5193, P.E. 28820
 9/11/78