

SURVEY PLAT

100883

Berlin Township
Lot 1, 4th Qtr, T-9-N, R-6-W
Holmes County, Ohio

RECD May 31ST, 1977

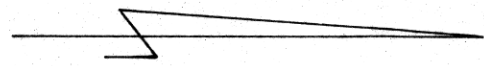
AT 2:44 O'CLOCK P.M.

RECORDED June 1, 1977

HOLMES CO. Plat VOL. 7 PG. 823

FEE: \$ 2.00

Richard Crane RECORDED



Scale 1"=100'

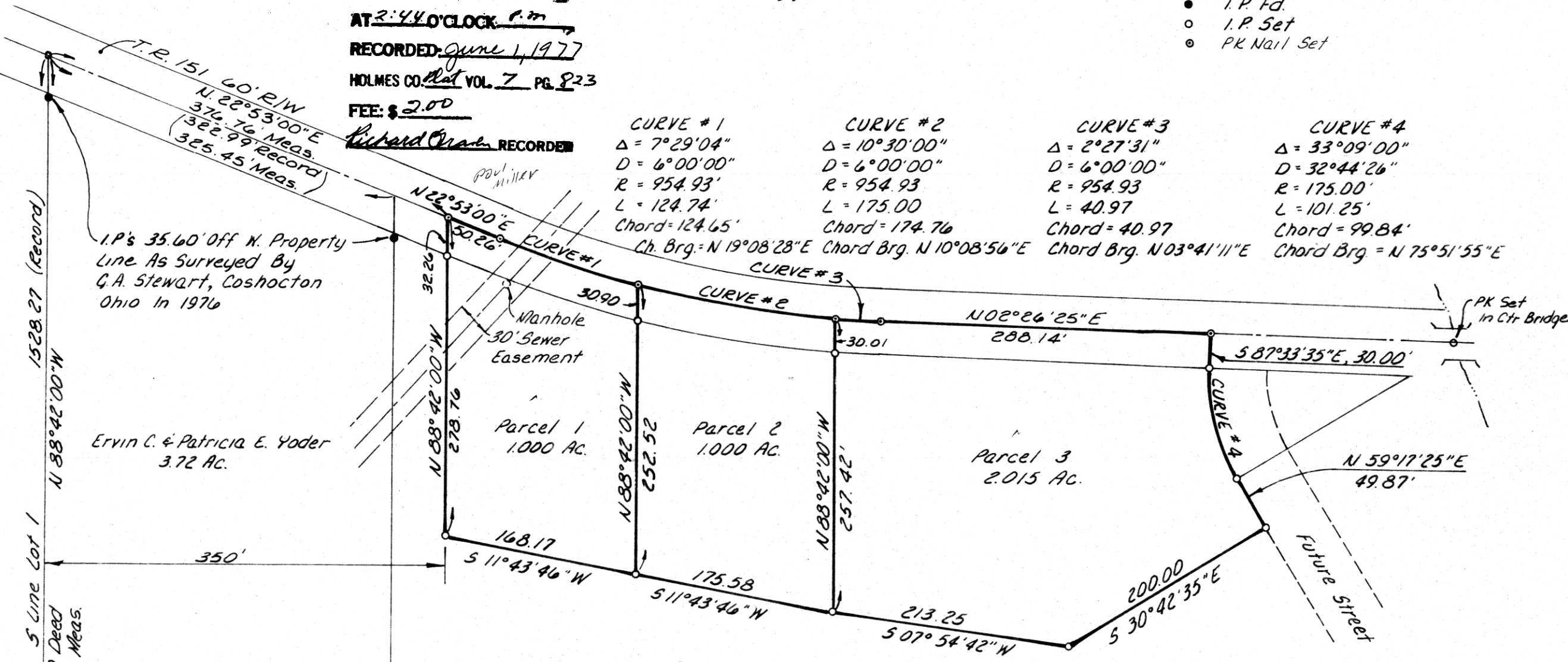
- I.P. Fd.
- I.P. Set
- ⊙ PK Nail Set

CURVE #1
Δ = 7°29'04"
D = 6°00'00"
R = 954.93'
L = 124.74'
Chord = 124.65'

CURVE #2
Δ = 10°30'00"
D = 6°00'00"
R = 954.93
L = 175.00
Chord = 174.76

CURVE #3
Δ = 2°27'31"
D = 6°00'00"
R = 954.93
L = 40.97
Chord = 40.97

CURVE #4
Δ = 33°09'00"
D = 32°44'26"
R = 175.00'
L = 101.25'
Chord = 99.84'
Chord Brg. = N 75°51'55" E



I.P.'s 35.60' Off N. Property Line As Surveyed By G.A. Stewart, Coshocton Ohio In 1976

Ervin C. & Patricia E. Yoder
3.72 AC.

This Survey Prepared For Drus Weaver, Owner On Dec. 22, 1976
By ENGINEERING ASSOCIATES Ltd., Wooster, Ohio

I Certify This Survey To Be Correct To The Best Of My Knowledge

William R. Hartnagel
William R. Hartnagel RS 5481

Deed Vol. 198-Pgs. 246 & 249

MAP OFFICE COPY