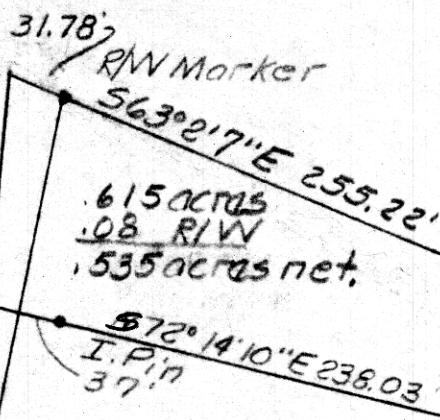


255.22  
 31.78  
 287.00

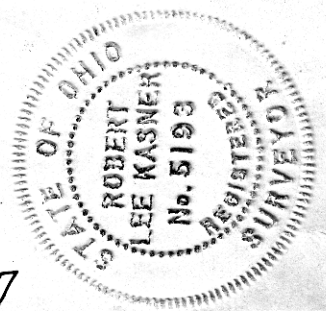
238.03  
 37  
 275.03

Curve L.P. = 1432.40'  
 N 81° 11' 08" E  
 316.11.88  
 121.90' chord



Carl J. Fink  
 Vol. 119 P 259

100867



REC'D: May 31, 1977

AT 10:56 O'CLOCK A.M.

RECORDED: May 31, 1977

HOLMES CO. Plat VOL 7 - PG 822

FEE: \$ 2.00

Richard Heaven RECORDER

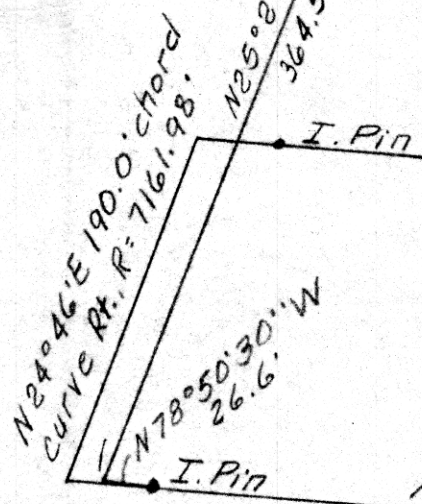
Deed Vol. 198 Page 227

PLAT OF A SURVEY FOR  
 CARL J. FINK (Grantor)  
 NW 1/4 of SE 1/4, S22, T9N, & R7W  
 Hardy Twp., Holmes Co., Ohio

Scale: 1" = 100'

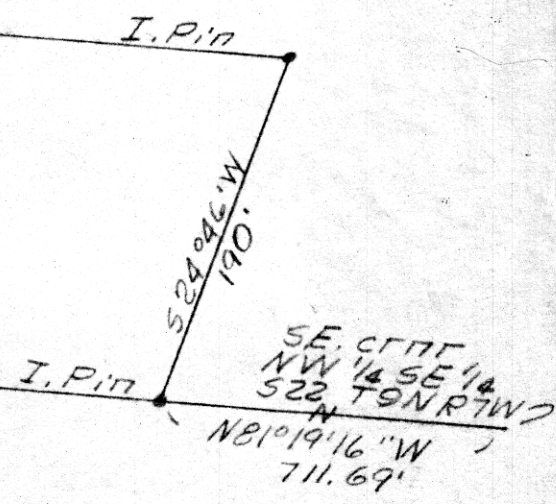
I certify this correct to the best  
 of my knowledge and belief.

Robert L. Kasner P.S. 5193



3.00 Ac.  
 .17 R/W  
 2.83 Ac. Net

N.W. 1/4, S.E. 1/4 S22 T9N R7W  
 N 81° 19' 16" W 45.32' + 670.50'



**MAP OFFICE COPY**