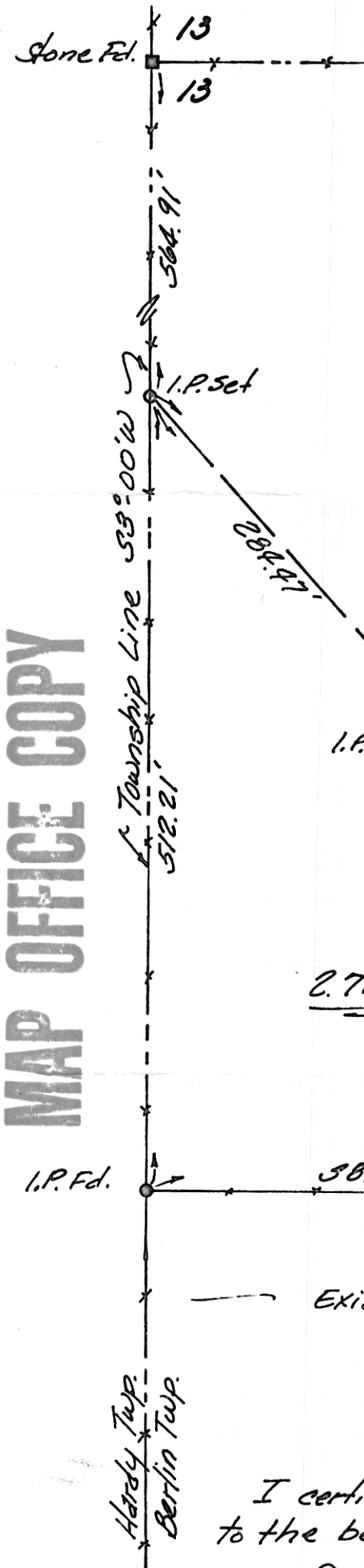


MAP OFFICE COPY



S.W. QUARTER  
 SECTION 13  
 BERLIN TOWNSHIP  
 T-9, R-6  
 HOLMES COUNTY  
 OHIO

Survey for: Willis Mast &  
 Roy Schlaebach

October 2, 1976

Scale: 1" = 100'

109869

REC'D: January 20, 1977  
 AT 3:30 O'CLOCK P.M.  
 RECORDED: Jan 21, 1977  
 HOLMES CO. Vol. 7 PG. 768  
 FEE: \$2.00

Richard Shwin RECORDER  
 Deed Vol. 197 Pg. 83

2.71 AS

— Exist. Schlaebach Property —

I certify this survey to be correct  
 to the best of my knowledge.

George C. Mullet, R.S. #5796



*J. Gendler*

4th 1/2 S. 26-76