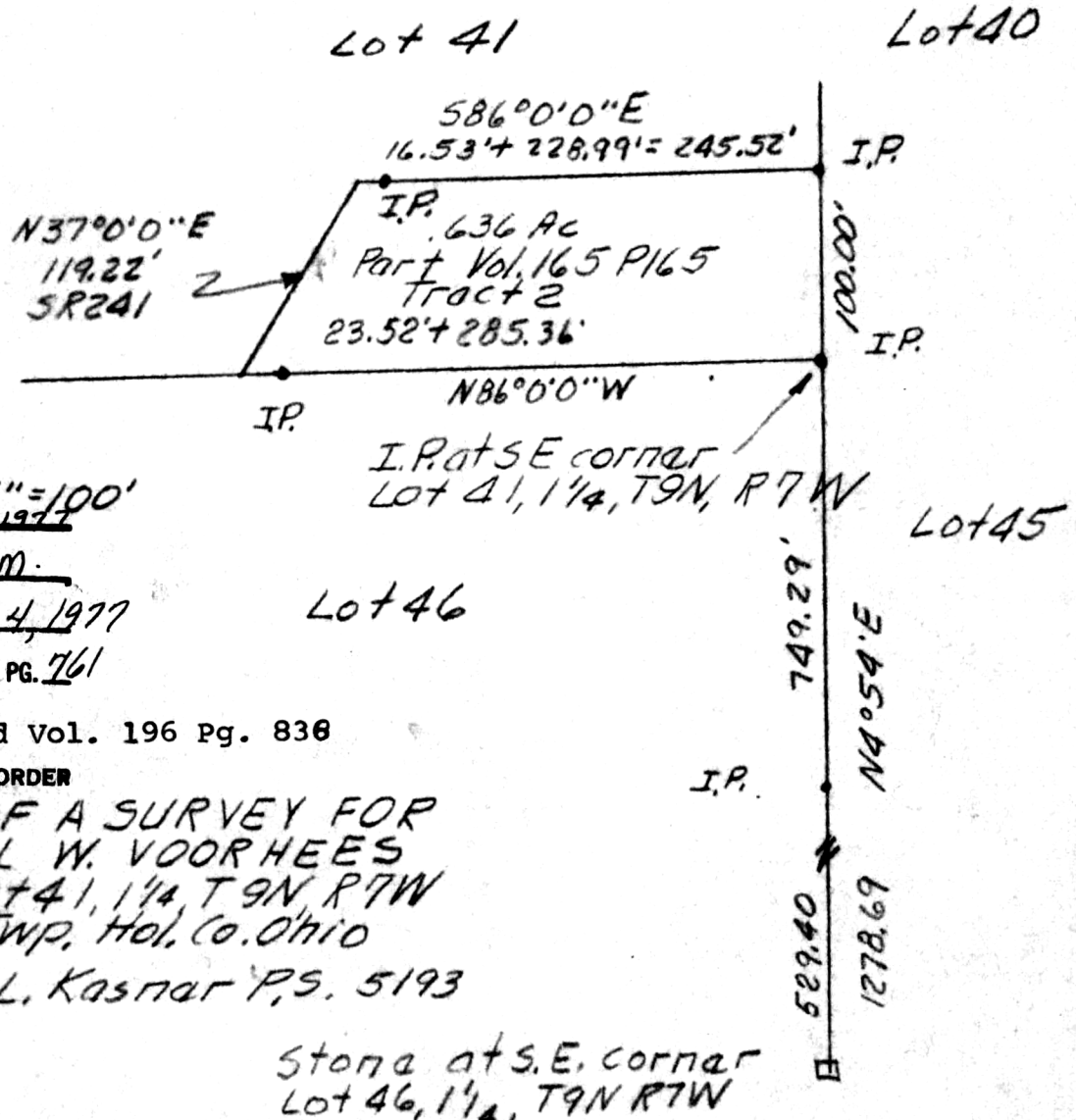


Known as part of the S.E. part of Lot 41, 1st 1/4, T9N, R7W of Hardy Twp., Hol. Co., Ohio, and more fully described as follows.

Beginning at an iron pin at the S.E. corner Lot 41; thence on the S. line N86°0'0"W 308.88' to a point in S.R.241 and passing an iron pin at 285.36'; thence leaving the S. line and with S.R. 241 N37°0'0"E 119.22'; thence leaving S.R.241 S86°0'0"E 245.52' to an iron pin on the E. line of Lot 41 and passing an iron pin at 16.53'; thence S 4°54'W 100.00' to the point of beginning and containing 0.636 acres but subject to all legal highways.

Part of Vol. 165 Pg. 165 Tract 2.



109739

RECD. January 3, 1977
 AT 12:49 O'CLOCK P.M.

RECORDED January 4, 1977

HOLMES CO. Plat VOL. 7 PG. 761

FEE: \$ 2.00 Deed Vol. 196 Pg. 836

Richard Shaver RECORDER

PLAT OF A SURVEY FOR
 DANIEL W. VOORHEES
 Part Lot 41, 1/4, T9N, R7W
 Hardy Twp., Hol. Co. Ohio
 Robert L. Kasnar P.S. 5193

Stone at S.E. corner
 Lot 46, 1/4, T9N R7W

MAP OFFICE COPY

11/11/76