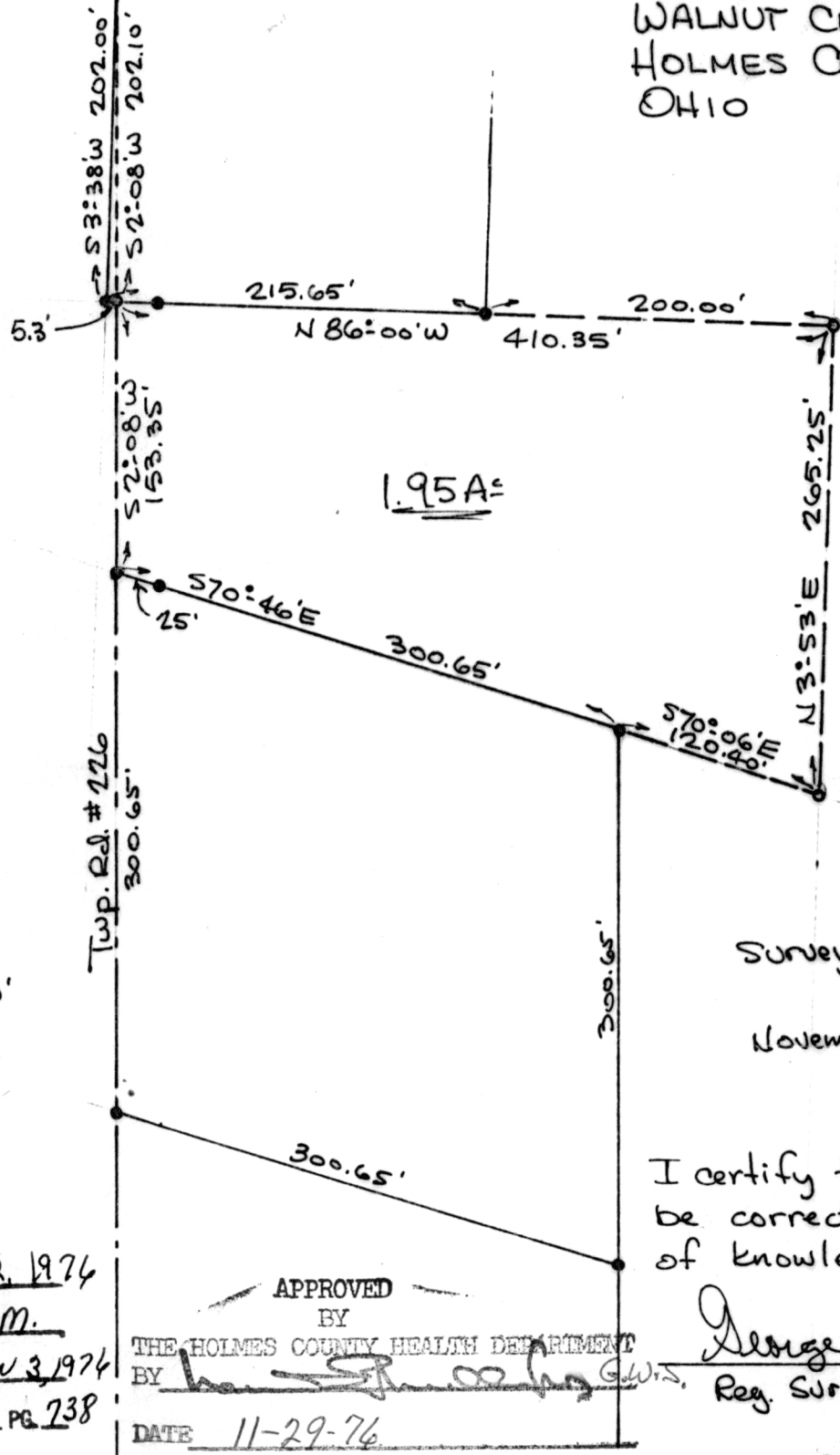


13 | 12
 18 | 19
 → S86°00'E 1332' ← Sect. Line
 ↓ 25'

N.W. QUARTER
 SECTION 19
 T-9, R-5
 WALNUT CREEK TWP.
 HOLMES COUNTY
 OHIO



Scale: 1" = 100'

- - I.P. Fd.
- - I.P. Set

Survey for Moses B. Mast
 November 6, 1976

I certify this survey to be correct to the best of knowledge.

George C. Mullet

Reg. Sur. # 5796

APPROVED BY
 THE HOLMES COUNTY HEALTH DEPARTMENT
 BY *[Signature]*
 DATE 11-29-76



REC'D: December 3, 1976
 AT 4:28 O'CLOCK P.M.
 RECORDED: December 3, 1976
 HOLMES CO. Plat VOL 7 PG 238
 FEE: \$ 2.00

Richard Graven RECORDER
 Deed Vol. 196 Page 569
 Job No. S-29-76

MAP OFFICE COPY