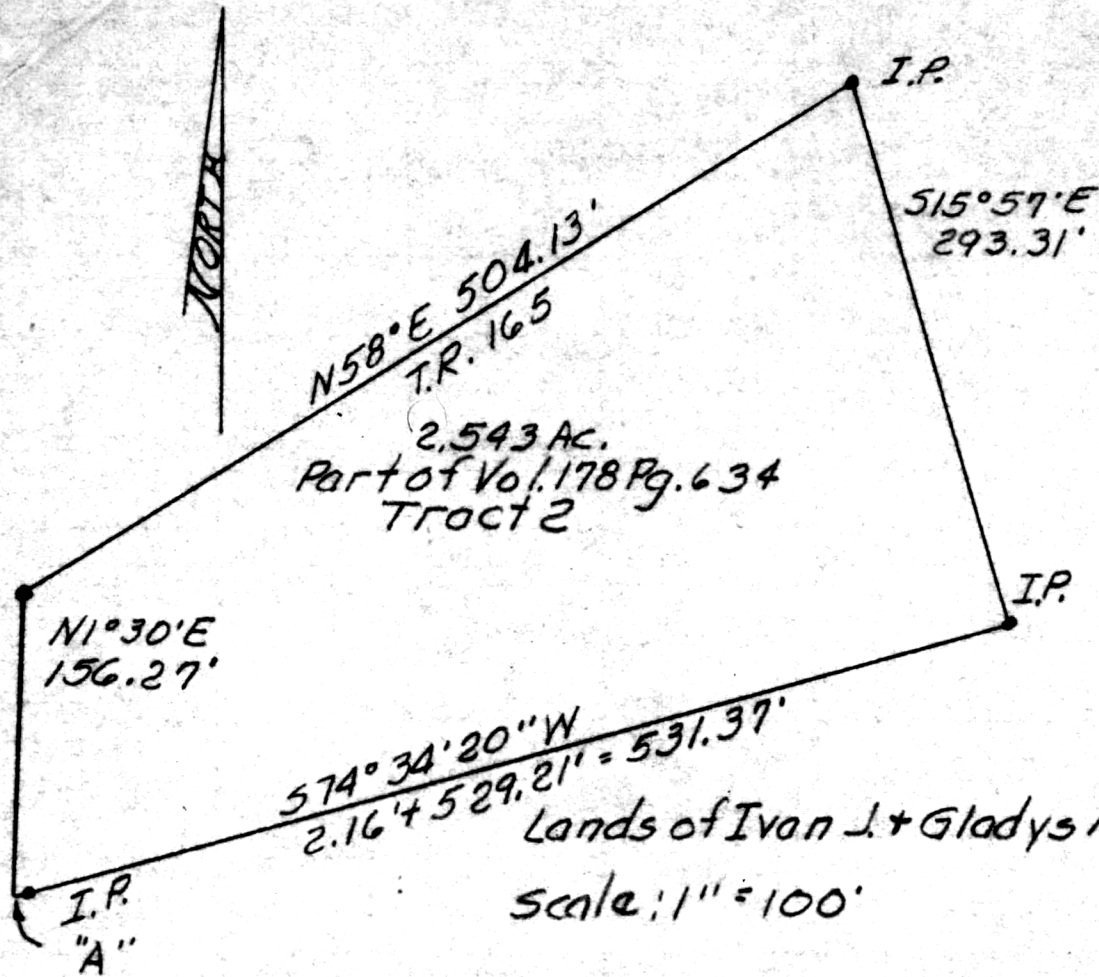


108517



2.543 Ac.  
Part of Vol. 178 Pg. 634  
Tract 2

Lands of Ivan J. + Gladys M. Troyer  
Scale: 1" = 100'

Point "A" is 51°30'W  
1991.67', 568°W 834'  
53°W 128' N80°W  
275.67', 583°30'W  
134.5', 512°W 197.5'  
588°30'W 174.5' and  
N1°30'W 873.73'  
from N.E. crnr SE.  
1/4 S 7, T9N, R4W  
Data from Vol. 178  
Pg. 634 #2.

108517

REC'D: Aug. 19-1976

AT 3:35 O'CLOCK P.M.

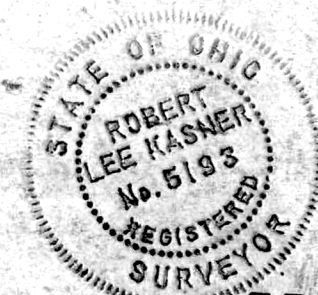
RECORDED: Aug. 20, 1976

HOLMES CO. Flat VOL. 7 PG. 687

FEE: \$ 2.00

Richard Shover RECORDER

Vol: 195  
Pg: 354



PLAT OF A SURVEY FOR  
IVAN J. + GLADYS  
TROYER  
(Grantors)  
Part of SE 1/4 S 7, T9N, R4W  
of Walnut Creek Twp., Hol. Co.,  
Ohio.  
Robert L. Kasner P.S. 5193

MAP OFFICE COPY

8/14/76