

INDEXED
108413

N.E. COR.
N.E. QUARTER
SEC. 16

SEC. 17

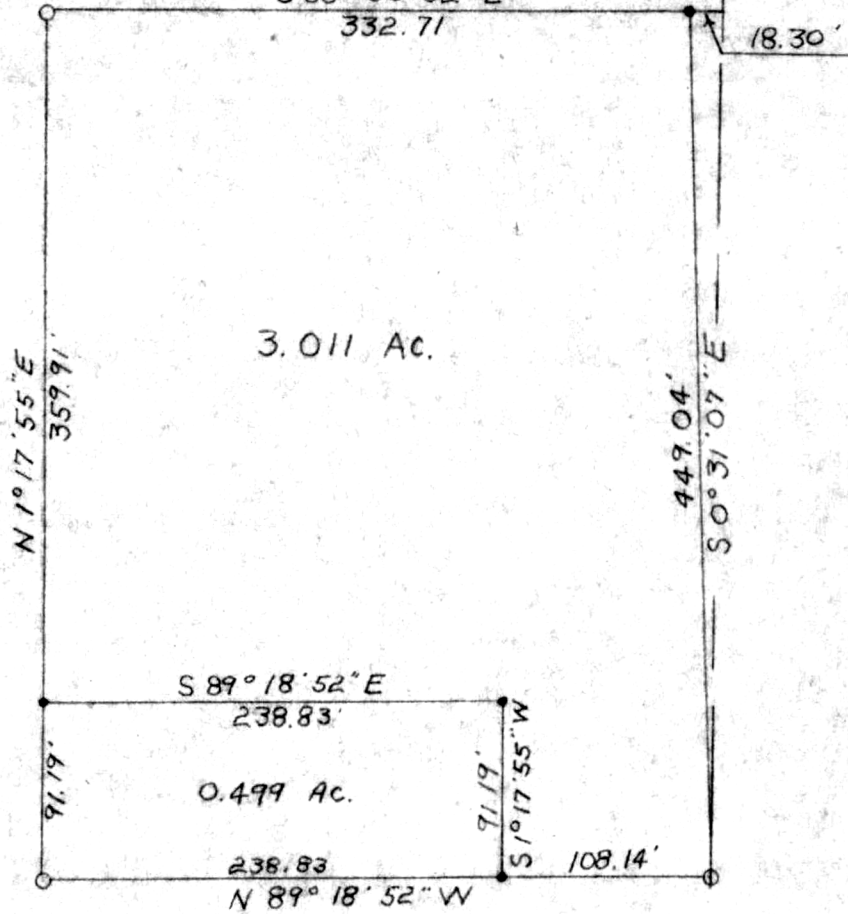


REC'D: August 9, 1976
AT 1:49 O'CLOCK
RECORDED: August 10, 1976
HOLMES CO. Plat VOL. 7 PG. 684
FEE: \$ 2.00

Richard Osborn RECORDER

J. M. Schuler

Deed: Vol. 195 Pg. ²⁴² S 88° 56' 52" E



○ = POST
● = STEEL PIN

PLAT OF A TRACT OF LAND
IN
NORTHEAST QUARTER, SECTION 16
RANGE 4W, TOWNSHIP 8N
CLARK TOWNSHIP
HOLMES COUNTY
OHIO

Scale: - 1" 100'

Date: - April 26, 1976



MAP OFFICE COPY

B. A. Stewart, Reg. Surveyor #A14