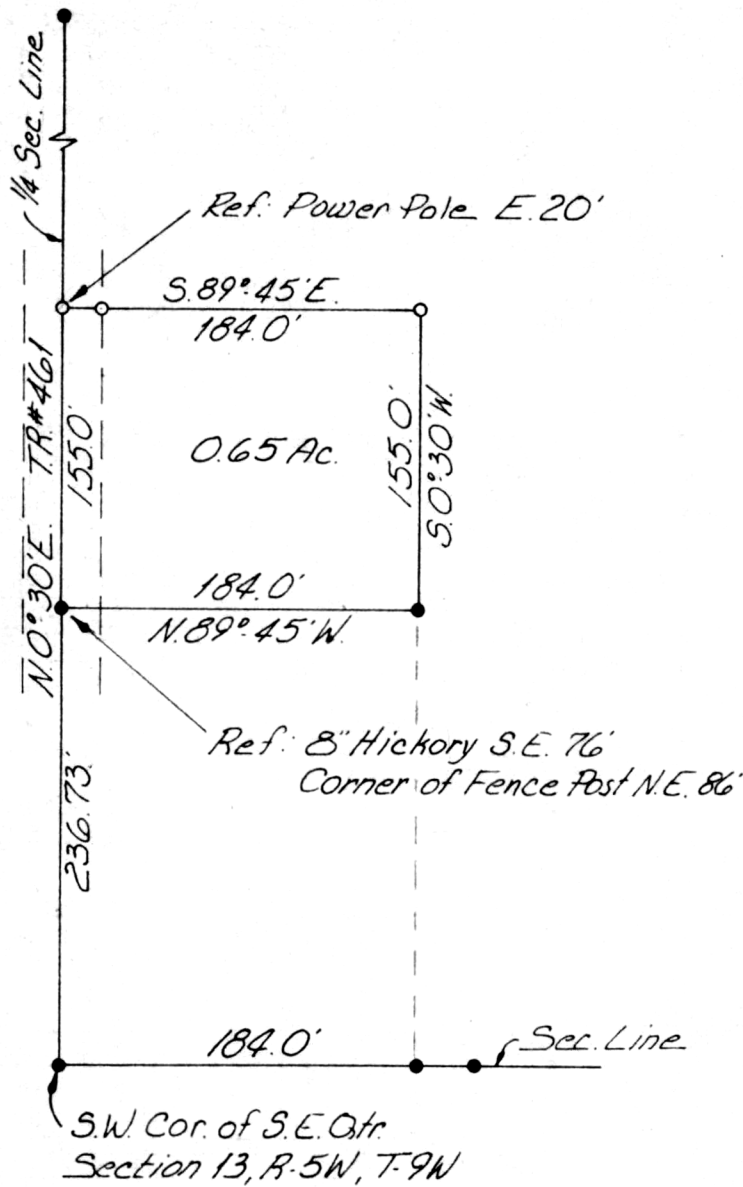


WALNUT CREEK TWP.
S.E. SEC. 13, R-5W, T-9N
HOLMES COUNTY, OHIO



Scale 1"=100'
• = I.P. Fd.
o = I.P. Set



I Certify This Plat to be a Correct Return
of Field Notes of a Survey in the S. E. Qtr.
Sec. 13, R-5W, T-9N Walnut Creek Twp.
Holmes Co. Ohio for Ervin Schrock
Made March 23, 1976.

SW-1698

SHAFFER, JOHNSTON, LICHTEN-
WALTER & ASSOC.

Wooster, Ohio

INDEXED 107188

Richard J. McDaid P. S. #5009

REC'D: April 1, 1976

AT 11:50 CLOCK a.m.

RECORDED: April 2, 1976

HOLMES CO. Plat VOL 7 PG. 591

FEE: \$ 2.00

Richard J. McDaid RECORDER

Deed: Vol. 193 Pg. 593

MAP OFFICE COPY