

SURVEY PLAT

for NELSON MILLER, Situated in LOT 22 of 1st Qtr. Twp.,
T.-9-N., R.-6-W., BERLIN TOWNSHIP, HOLMES COUNTY, OHIO

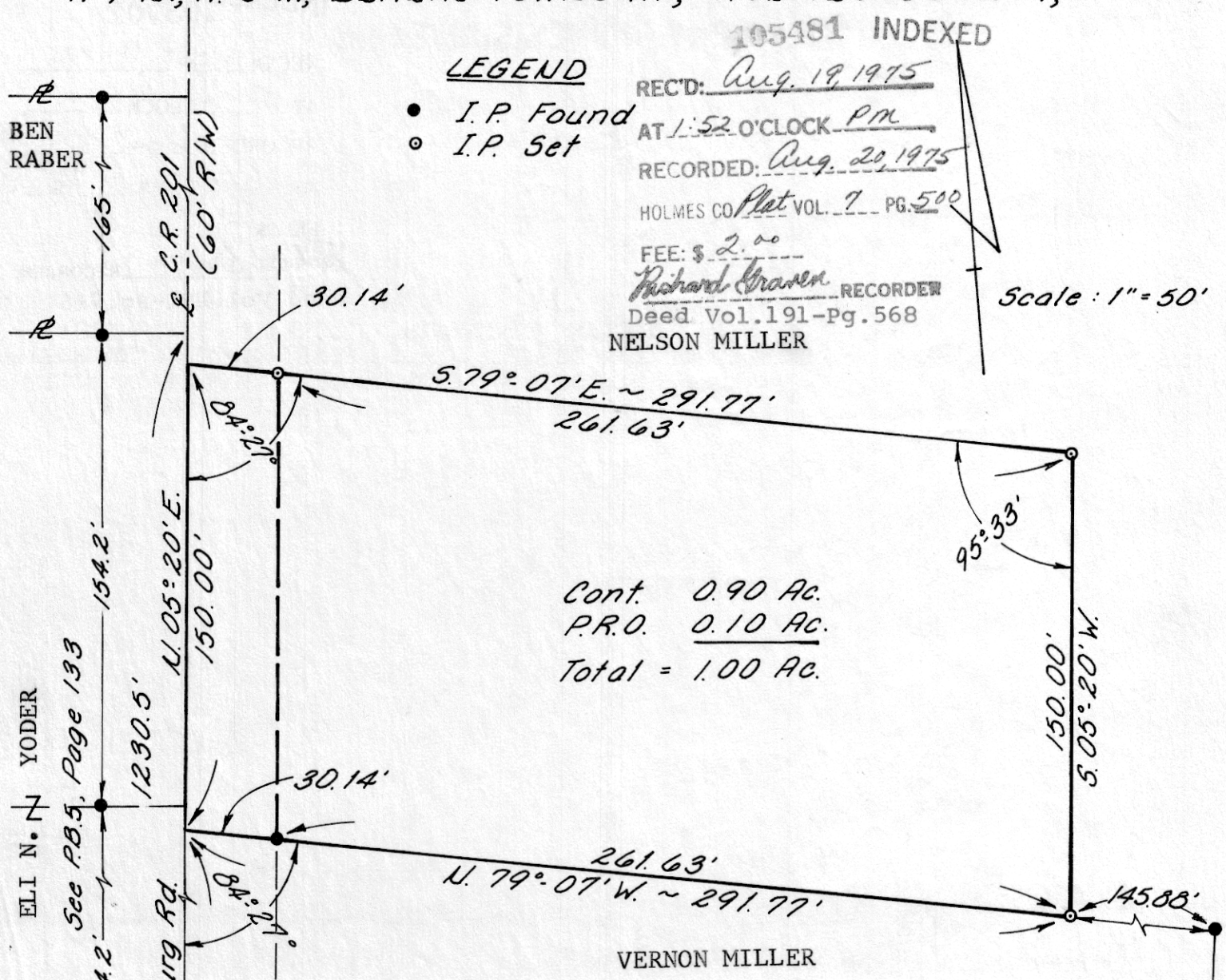
105481 INDEXED

LEGEND

- I.P. Found
- I.P. Set

REC'D: Aug. 19, 1975
 AT 1:52 O'CLOCK PM
 RECORDED: Aug. 20, 1975
 HOLMES CO. Plat VOL. 7 PG. 500
 FEE: \$ 2.00
Richard Graven RECORDER
 Deed Vol. 191-Pg. 568
 NELSON MILLER

Scale: 1" = 50'



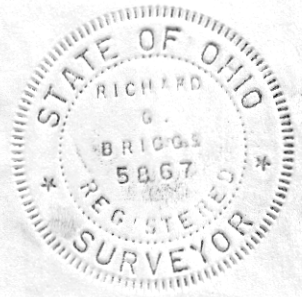
Cont. 0.90 Ac.
 P.R.O. 0.10 Ac.
 Total = 1.00 Ac.

VERNON MILLER

Survey completed June 27, 1975
 by ENGINEERING ASSOCIATES, LTD.

I certify this plat to be correct
 to the best of my knowledge.

Richard G. Briggs
 Richard G. Briggs, P. S. #5867
 ENGINEERING ASSOCIATES, LTD.
 Wooster, Ohio



MAP OFFICE COPY

ELI N. YODER
 See P.B. 5, Page 133
 154.2'
 1230.5'
 1068.1'
 Fryburg-Fredericksburg Rd.
 154.2'
 154.2'
 165'
 BEN RABER
 C.R. 201 (60' R/W)
 U. 05° 20' E.
 150.00'
 30.14'
 84° 22'
 5.79° 07' E. ~ 291.77'
 261.63'
 95° 33'
 150.00'
 5.05° 20' W.
 145.88'
 N. 79° 07' W. ~ 291.77'
 261.63'
 30.14'
 84° 22'
 1068.1'
 23
 3
 22
 2
 Summers