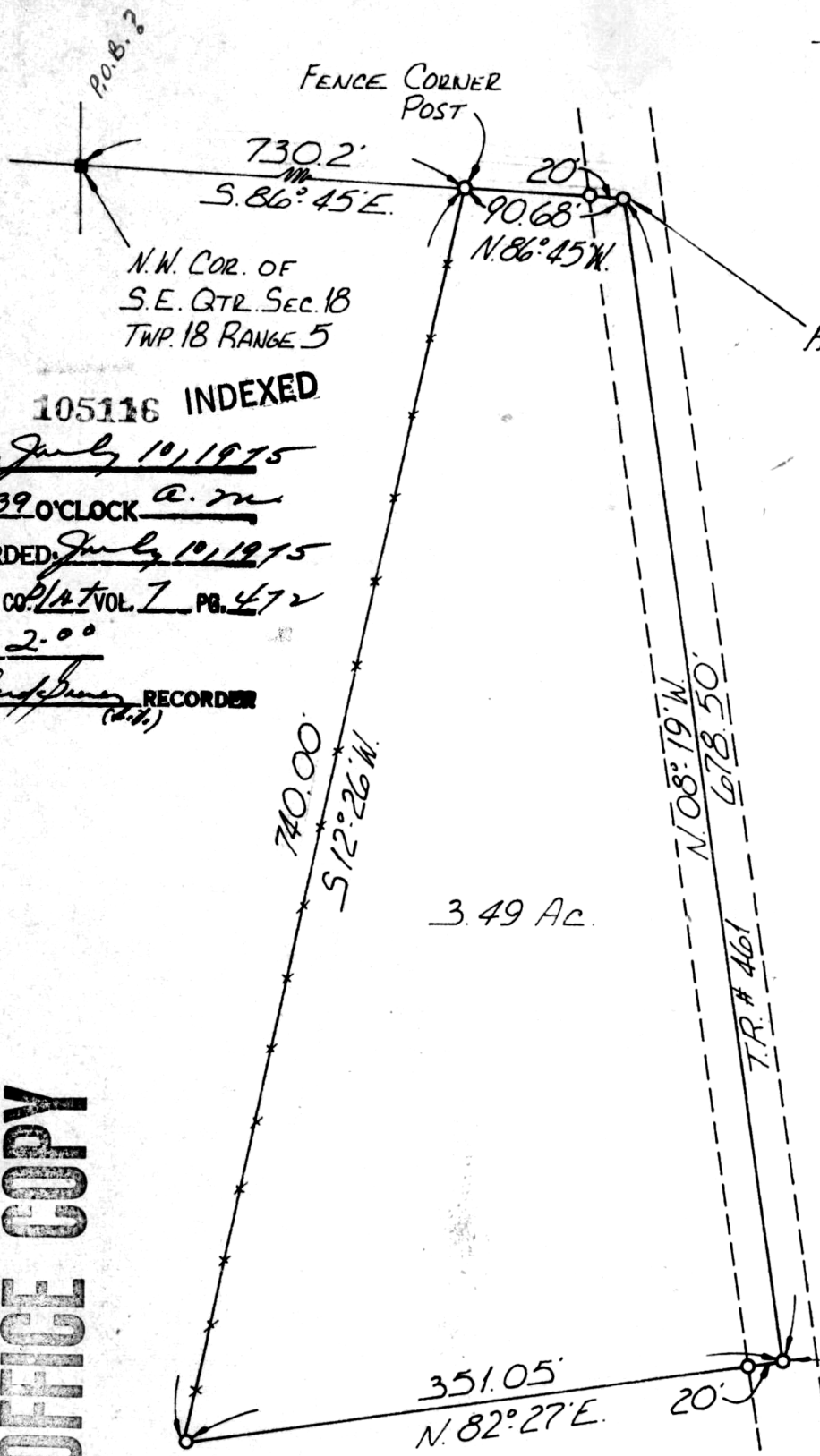


WALNUT CREEK TWP.
SECTION 18
TWP. 18 RANGE 5
HOLMES COUNTY, OHIO



REF: 12" WALNUT N.W. 21.8'
12" MAPLE N.E. 39.0'
TWIN 18" GUM S.E. 24.0'

SCALE 1" = 100'
● = I.P. Fd.
○ = I.P. SET
■ = Stone Fd.

MADE FOR: DAN YODER

REF: 14" OAK N.E. 11.8'
14" OAK S.E. 14.3'
18" WALNUT N.W. 25.3'

105116 INDEXED
REC'D: July 10, 1975
AT 9:39 O'CLOCK a.m.
RECORDED: July 10, 1975
HOLMES CO. PLAT VOL. 7 PG. 472
FEE: \$ 2.00
Richard J. McDaid RECORDER
(27)

MAP OFFICE COPY

SW-1651

Shaffer, Johnston, Lichtenwalter & Assoc.
Wooster Ohio

I certify this survey to be correct to the best of my knowledge. June 4, 1975.

Richard J. McDaid
Richard J. McDaid, P. S. 5009

