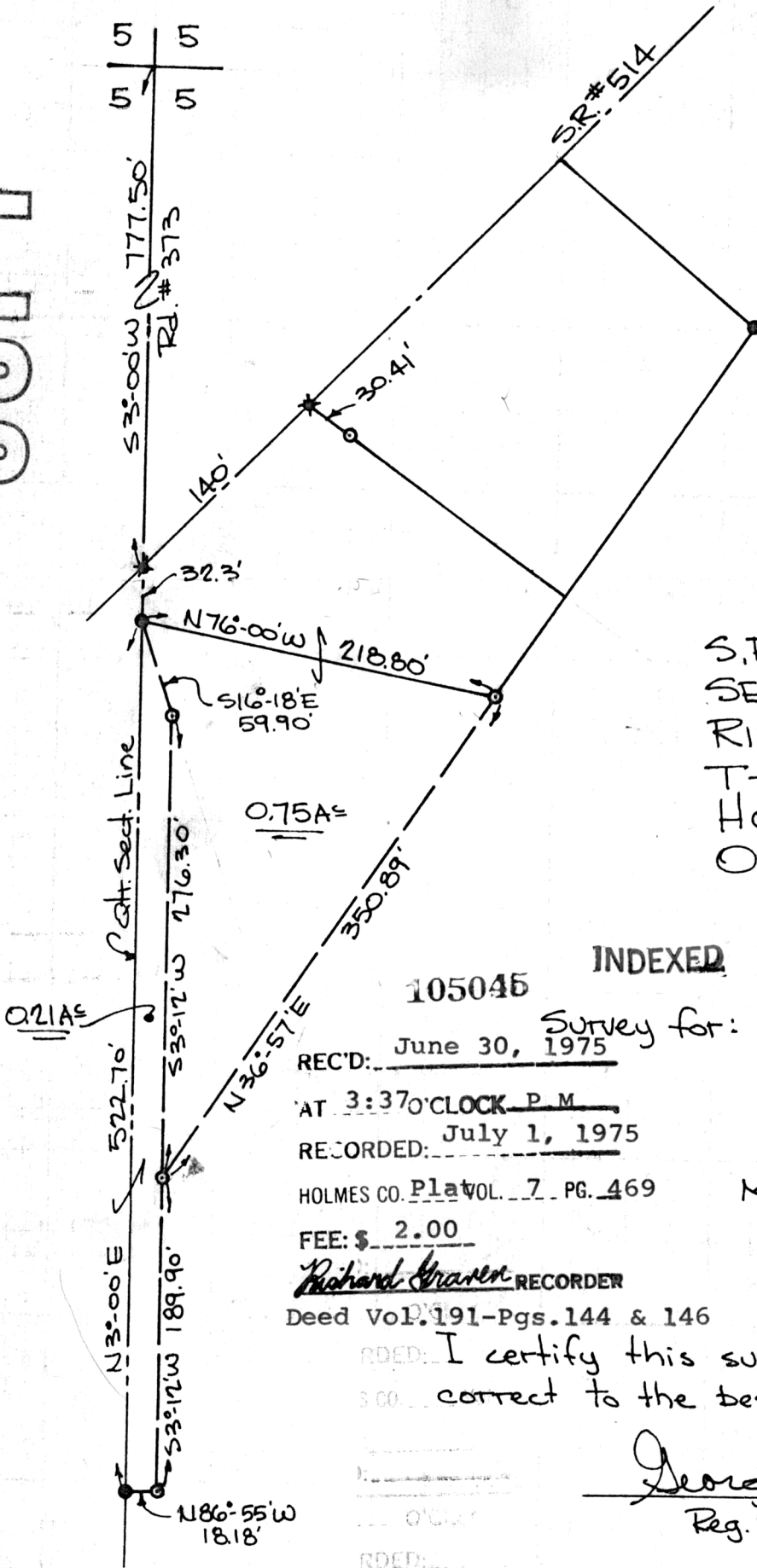


COPY



Scale: 1" = 100'

S.E. QUARTER SECTION 5  
RIPLEY TWP.  
T-17, R-14  
HOLMES COUNTY  
OHIO

INDEXED

105045

REC'D: June 30, 1975  
AT 3:37 O'CLOCK P.M.  
RECORDED: July 1, 1975

HOLMES CO. Plat VOL. 7 PG. 469  
FEE: \$ 2.00

*Richard Straven* RECORDER  
Deed Vol. 191-Pgs. 144 & 146

May 24, 1975

I certify this survey to be correct to the best of my knowledge.

*George C. Mullet*  
Reg. Sur. # 5796

- x - R.R. Spike Found
- - I.P. Found
- - I.P. Set



MAP OFFICE COPY