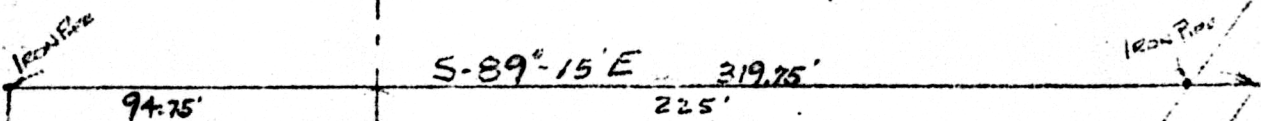


S.W. 1/4 W.W. LANG S.E. 1/4



0.592 AC.  
(IN S.W. 1/4)

(0.811 AC. IN S.E. 1/4)

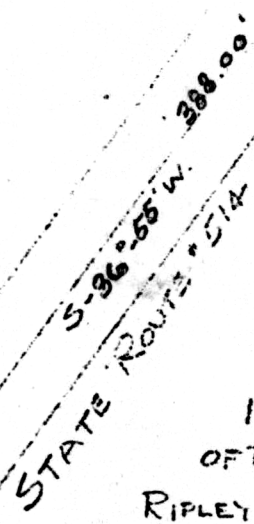
103262

DEED: Oct. 31, 1974  
 AT 3:45 D'CLOCK PM  
 RECORDED: Nov. 1, 1974  
 HOLMES CO. Plat VOL 7 PG. 353  
 FEES 2.00  
Richard Strawn RECORDER

Deed Vol. 189-Pg. 76

1.403 TOTAL ACRES

W.W. LANG



PLAT OF SURVEY.

1.403 ACRE TRACT - A PART  
 OF THE S.W. 1/4 & S.E. 1/4 SEC 37 -  
 RIPLEY TWP #17 - RANGE #14 -  
 HOLMES COUNTY, OHIO.  
 1974

FOR  
 W.W. LANG - AREA FOR POULTRY BUSINESS

I HEREBY CERTIFY THIS PLAT TO BE CORRECT TO  
 A SURVEY MADE BY ME JANUARY 14, 1974

*Walter F. Sage*

S.E. COR. SW 1/4 - 7-17-14  
 S.W. COR. SE 1/4 - 7-17-14  
 697.60

WALTER F. SAGE  
 REGISTERED SURVEYOR #789  
 3904 Darlington Rd. N.W.  
 CANTON 8, OHIO  
 DATE: 1-15-74 SCALE: 1"=50'  
 B. P. DWG. NO. SK 133

MAP OFFICE COPY