

REC'D: Oct. 31, 1974
 AT 3:44 D'CLOCK PM
 RECORDED: Nov. 1, 1974
 HOLMES CO. Plat VOL 7 PG. 352
 FEES 2.00
Richard Straven RECORDER
 Deed Vol.189-Pg.76

- PLAT OF SURVEY -

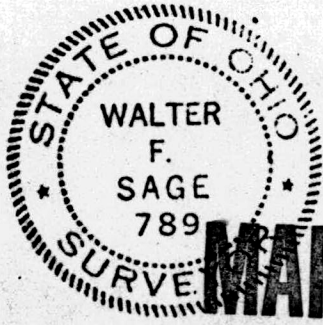
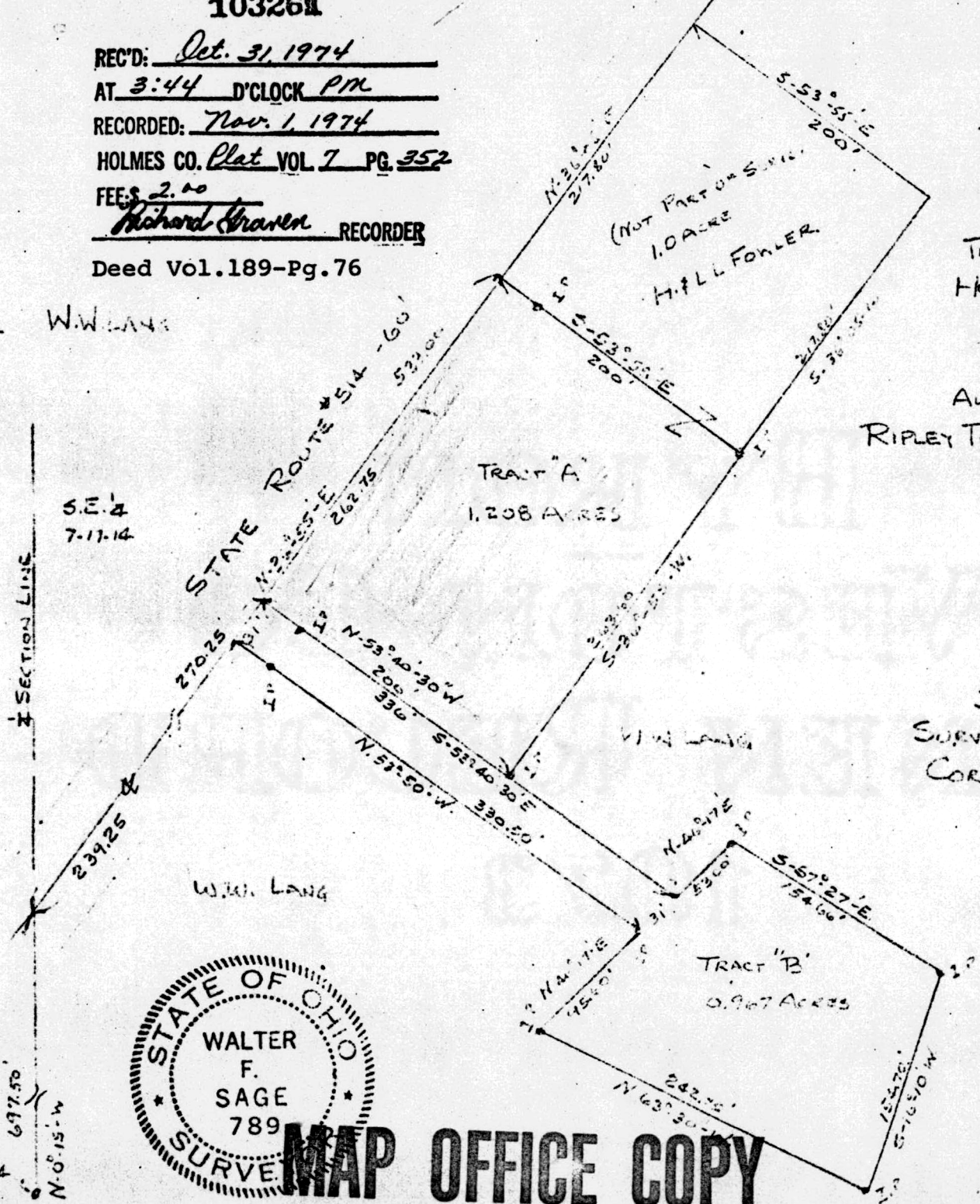
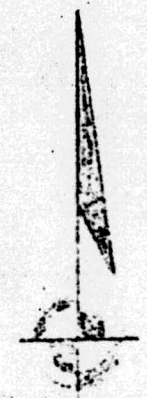
TRACT A OF 1.208 ACRES, W. & J. LANG
 TO H. & L. L. FOWLER

TRACT B - OF 0.967 ACRES FOR NEW
 HOUSE & DRIVEWAY FOR W. & J. LANG

ALL BEING A PART OF THE S.E. 1/4 - SEC. 7
 RIPLEY TWP. 17, RANGE 14 - HOLMES COUNTY,
 OHIO -

I HEREBY CERTIFY THIS PLAT OF
 SURVEY OF TRACTS A & B TO BE
 CORRECT TO A SURVEY MADE BY ME
 JANUARY 24, 1974

Walter F. Sage



MAP OFFICE COPY

WALTER F. SAGE
 REGISTERED SURVEYOR - 789
 3904 Darlington Rd. N. W.
 CANTON 8, OHIO

DATE: 1-28-73 SCALE: 1"=100'
 B. P. DWG. NO. SK 1338

VOL 7 PAGE 352

VOL

S.W. CORNER
 S.E. 1/4 - 7-17-14

S.W. 1/4
 7-17-14

S.E. 1/4
 7-17-14

SECTION LINE

STATE ROUTE 514

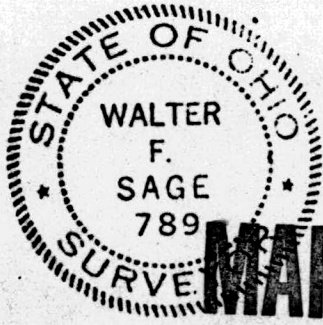
W. & J. LANG

TRACT "A"
 1.208 ACRES

TRACT "B"
 0.967 ACRES

I HEREBY CERTIFY THIS PLAT OF SURVEY OF TRACTS A & B TO BE CORRECT TO A SURVEY MADE BY ME JANUARY 24, 1974

Walter F. Sage



MAP OFFICE COPY

WALTER F. SAGE
 REGISTERED SURVEYOR - 789
 3904 Darlington Rd. N. W.
 CANTON 8, OHIO

DATE: 1-28-73 SCALE: 1"=100'
 B. P. DWG. NO. SK 1338