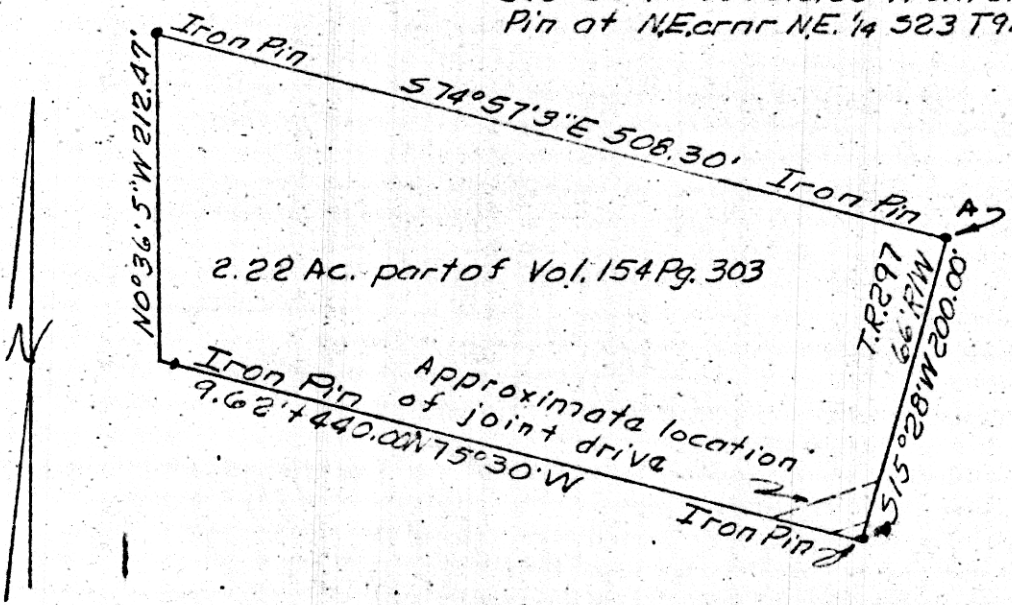


7-316

Lloyd Uhl

Point A is N87°W 552.42' and  
S13°25'10"W 1218.36' from an Iron  
Pin at NE cor. NE 1/4 S23 T9N R7W



2.22 Ac. part of Vol. 154 Pg. 303

Approximate location  
of joint drive

102589

REC'D: Aug 15, 1974  
 AT 11:11 O'CLOCK AM  
 RECORDED: Aug 16, 1974  
 HOLMES CO. Plat VOL. 7 PG. 316  
 FEE: \$2.00  
Richard Strawn RECORDER

Scale: 1"=100'



PLAT OF A SURVEY IN  
 NE 1/4 S23, T9N, R7W of  
 Hardy Township, Holmes County  
 and State of Ohio

Robert L. Kasner, P.S. 5193

8/4/74