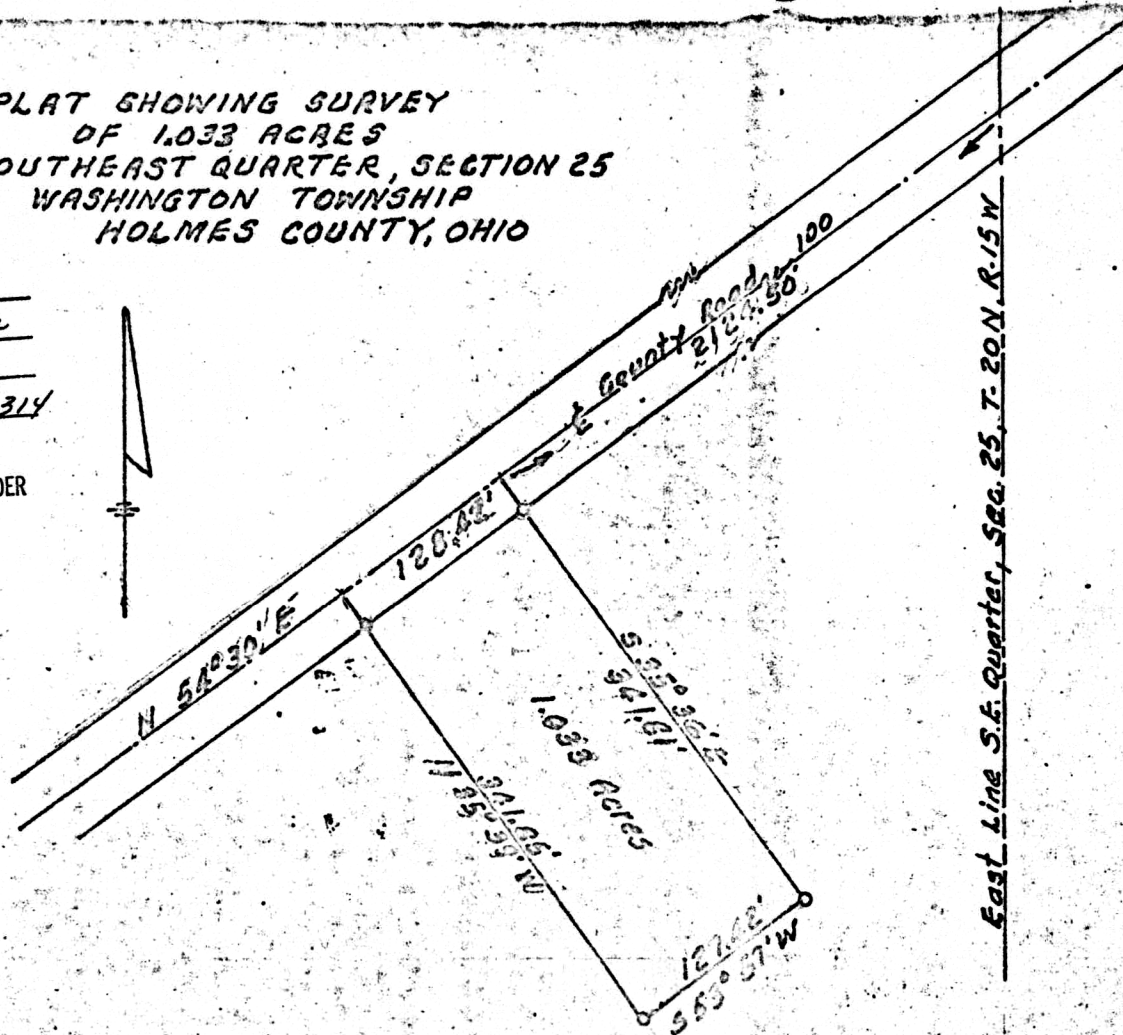


102532

PLAT SHOWING SURVEY
OF 1.033 ACRES
SOUTHEAST QUARTER, SECTION 25
WASHINGTON TOWNSHIP
HOLMES COUNTY, OHIO

REC'D: Aug. 8, 1974
AT 10:48 D'CLOCK a.m.
RECORDED: Aug. 8, 1974
HOLMES CO. Plat VOL. 7 PG. 314
FEES 2.30
Richard Craven RECORDER

Deed Vol. 188 Page 228



MAP OFFICE COPY

June 28, 1974
Scale 1"=100'
By: Shelby J. Edwina
Reg. Surveyor 39.